



CITY OF PALM DESERT

ADMINISTRATIVE SERVICES

To: Honorable Mayor and Councilmembers

From: Stephen Aryan, Risk Manager

Date: May 13, 2020

Subject: **Supplemental Information – New Business Item-F of the May 14, 2020, City Council Agenda**

Please find attached additional information from the Fire Department on the call volume both within and outside the Primary Response Area (PRA) of Fire Station No. 71.

The Cal Fire/Riverside County Fire Department-Unit Response Statistics (Attachment “A”) shows all responses from Engine No. 71 to all County jurisdictions. Some areas responded to include those outside the Cove Communities, which is attributable to the regional, integrated, cooperative fire department. No one agency can handle large emergencies alone. One such example might be a three alarm fire in Indio that will draw in numerous resources and create a vacuum. The Command Center immediately mitigates this void by moving in other resources. It is not uncommon for a Temecula Fire Engine to be moved into a Palm Desert Station behind large emergencies.

The Excel attachments show both outside responses from Station 71 and also outside resources into its First Due or Primary Response Area in 2019. Station 71’s PRA is comprised of Palm Desert, Rancho Mirage, and portions of unincorporated Riverside County. The data can only be generated by specific vehicle number. For example, you can see that Engine 71 (E71) responded 820 times into Rancho Mirage, while Rancho Mirage’s Engine 69 (E69) and 50 (E50) responded into the Station 71 PRA 274 and 61 times respectively. Therefore, approximately 20% of the Code Three calls for Engine 71 were for a Rancho Mirage response.

I know that this information is a lot to absorb, so I asked our Fire and GIS team to generate a “heat map” of all incidents within the Primary Response Area. This map will help you better visualize where response are generated from in the PRA. It illustrates why Engine 71’s units are nicknamed “the Country Club Express.”

CAL FIRE/Riverside County Fire Department

Unit Response Statistics *

*The numbers provided on this report are actual Unit Responses and not Incident Counts. To obtain Incident Counts use the Incident Report.



Shawn C. Newman

Fire Chief

5/12/2020

Report Provided By: Riverside County Fire Department

Communications and Technology Division

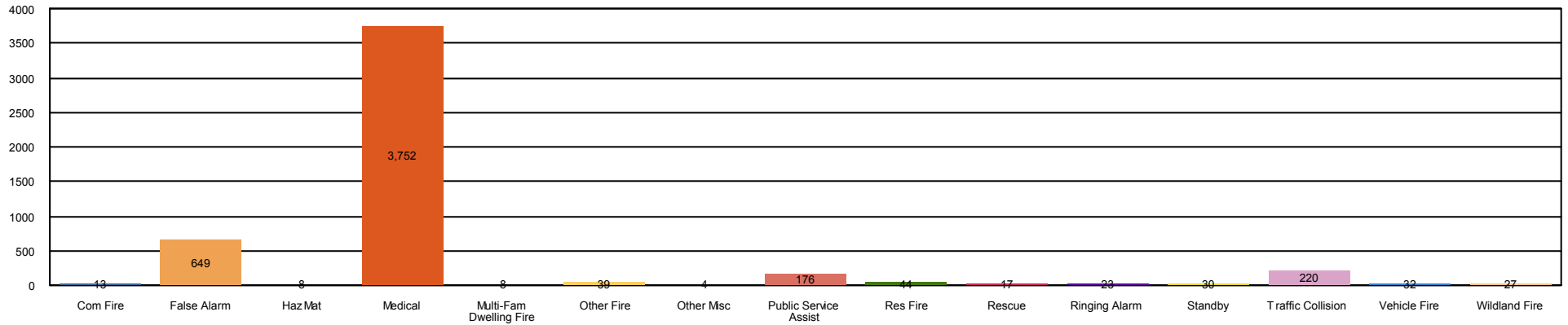
GIS Section

Please refer to Map and Unit Responses by Battalion, Station, and Jurisdiction

Incidents Reported for year 2019 and Both (Code 2, Alpha, Omega, Code 3, Charlie, Delta, Bravo, Echo) and Unit E71

*Incidents are shown based on the units that responded.

Unit Response Activity



Com Fire	13
False Alarm	649
Haz Mat	8
Medical	3752
Multi-Fam Dwelling Fire	8
Other Fire	39
Other Misc	4
Public Service Assist	176
Res Fire	44
Rescue	17
Ringing Alarm	23
Standby	30
Traffic Collision	220
Vehicle Fire	32
Wildland Fire	27
Incident Total:	5,042
Transport Total:	314
Dry Runs:	4,728

Average Enroute to Onscene Time*

Enroute Time = When a unit has been acknowledged as responding. Onscene Time = When a unit has been acknowledge as being on scene. For any other statistic outside Enroute to Onscene please contact the IT Help Desk at 951-940-6900

<5 Minutes	+5 Minutes	Average	% 0 to 5 min
3986	967	4.0	79.1%

*CODE 3 and CODE 2 incidents are included in the total count of incidents and the average Enroute to Onscene Time.

*The numbers provided on this report may reflect multiple unit responses to a single incident.

*Incidents are shown based on the units that responded.

Unit Responses by Battalion, Station and Jurisdiction

		Com Fire	False Alarm	Haz Mat	Medical	Multi-Fa m Dwelling	Other Fire	Other Misc	Public Service Assist	Res Fire	Rescue	Ringin g Alarm	Standby	Traffic Collision	Vehicle Fire	Wildland Fire	Total
E71	Cathedral City	0	1	0	0	0	1	0	0	0	0	0	0	2	0	0	4
	City of Coachella	0	0	0	0	0	0	0	0	1	0	0	0	0	0	0	1
	City of Desert Hot S	1	20	0	8	0	8	0	0	4	1	0	1	6	4	0	53
	City of Indian Wells	1	11	0	8	0	3	0	0	2	0	1	0	2	0	0	28
	City of Indio	1	0	0	2	0	0	0	0	2	0	0	0	3	2	1	11
	City of La Quinta	0	1	0	1	0	0	0	0	0	0	0	0	1	0	0	3
	City of Menifee	0	0	0	2	0	0	0	0	0	0	0	0	0	0	0	2
	City of Palm Desert	6	382	8	2,727	8	12	4	137	11	8	17	20	114	10	2	3,466
	City of Palm Springs	0	0	0	0	0	1	0	0	0	0	0	0	0	0	0	1
	City of Rancho Mira	0	162	0	916	0	3	0	33	5	7	4	2	26	5	2	1,165
Riverside County U	4	72	0	88	0	11	0	6	19	1	1	7	66	11	22	308	
Grand Total		13	649	8	3,752	8	39	4	176	44	17	23	30	220	32	27	5,042

Unit Transports

		Total
E71	City of Palm Desert	261
	City of Rancho Mirage	52
	Riverside County Unincorporated Area	1
	Sub Total	314
Grand Total		314

Unit Medical Responses by Definition

*The numbers provided on this report may reflect multiple unit responses to a single incident.

*Incidents are shown based on the units that responded.

Unit Medical Responses by Definition (Continued)

			Continued Medical	
			Medical Diff Breathing	Medical Fall
E71	Station 33 Palm Desert	City of Palm	0	4
		Desert		
		City of Rancho	0	1
		Total	0	5
	Station 35 Roy Wilson	City of	2	1
		Rancho Riverside County	1	4
		Total	3	5
	Station 50 South Rancho Mirage	City of	4	1
		Rancho		
		Total	4	1
	Station 55 Indian Wells	City of Indian Wells	1	0
		City of Palm Desert	3	1
		Total	4	1
	Station 56 Sky Valley	Riverside County	2	0
		Total	2	0
		Station 69 North Rancho Mirage	City of Palm Desert	1
	City of Rancho		3	6
	Total		4	8
	Station 71 North Palm Desert	City of Palm Desert	97	92
		City of Rancho	11	41
		Total	108	133
Station 81 North Bermuda Dunes	Riverside County	0	5	
	Total	0	5	
	Grand Total	125	158	

*The numbers provided on this report may reflect multiple unit responses to a single incident.

Last Updated 5/12/2020 1

*Incidents are shown based on the units that responded.

Unit Medical Responses by Definition (Continued)

Unit Responses by Jurisdiction

		Com Fire	False Alarm	Haz Mat	Medical	Multi-Fa m Dwelling	Other Fire	Other Misc	Public Service Assist	Res Fire	Rescue	Ringin g Alarm	Standby	Traffic Collision	Vehicle Fire	Wildland Fire	Total
E71	Cathedral City	0	1	0	0	0	1	0	0	0	0	0	0	2	0	0	4
	City of Coachella	0	0	0	0	0	0	0	0	1	0	0	0	0	0	0	1
	City of Desert Hot Sp	1	20	0	8	0	8	0	0	4	1	0	1	6	4	0	53
	City of Indian Wells	1	11	0	8	0	3	0	0	2	0	1	0	2	0	0	28
	City of Indio	1	0	0	2	0	0	0	0	2	0	0	0	3	2	1	11
	City of La Quinta	0	1	0	1	0	0	0	0	0	0	0	0	1	0	0	3
	City of Menifee	0	0	0	2	0	0	0	0	0	0	0	0	0	0	0	2
	City of Palm Desert	6	382	8	2,727	8	12	4	137	11	8	17	20	114	10	2	3,466
	City of Palm Springs	0	0	0	0	0	1	0	0	0	0	0	0	0	0	0	1
	City of Rancho Mirag	0	162	0	916	0	3	0	33	5	7	4	2	26	5	2	1,165
	Riverside County Uni	4	72	0	88	0	11	0	6	19	1	1	7	66	11	22	308
Sub Total	13	649	8	3,752	8	39	4	176	44	17	23	30	220	32	27	5,042	
Grand Total	13	649	8	3,752	8	39	4	176	44	17	23	30	220	32	27	5,042	

Unit Responses by Supervisorial District - Summary

		Com Fire	False Alarm	Haz Mat	Medical	Multi-Fa m Dwelling	Other Fire	Other Misc	Public Service Assist	Res Fire	Rescue	Ringin g Alarm	Standby	Traffic Collision	Vehicle Fire	Wildland Fire	Total
District 3 CHUCK	E71	0	0	0	0	0	0	0	0	0	0	0	0	0	0	0	1
WASHINGTON	Total	0	0	0	0	0	0	0	0	0	0	0	0	0	0	0	1
District 4 V.	E71	12	647	8	3,749	8	38	4	176	42	17	23	29	220	31	23	5,027
MANUEL PEREZ	Total	12	647	8	3,749	8	38	4	176	42	17	23	29	220	31	23	5,027
District 5 JEFF	E71	1	2	0	3	0	1	0	0	2	0	0	1	0	1	3	14
HEWITT	Total	1	2	0	3	0	1	0	0	2	0	0	1	0	1	3	14

*The numbers provided on this report may reflect multiple unit responses to a single incident.

*Incidents are shown based on the units that responded.

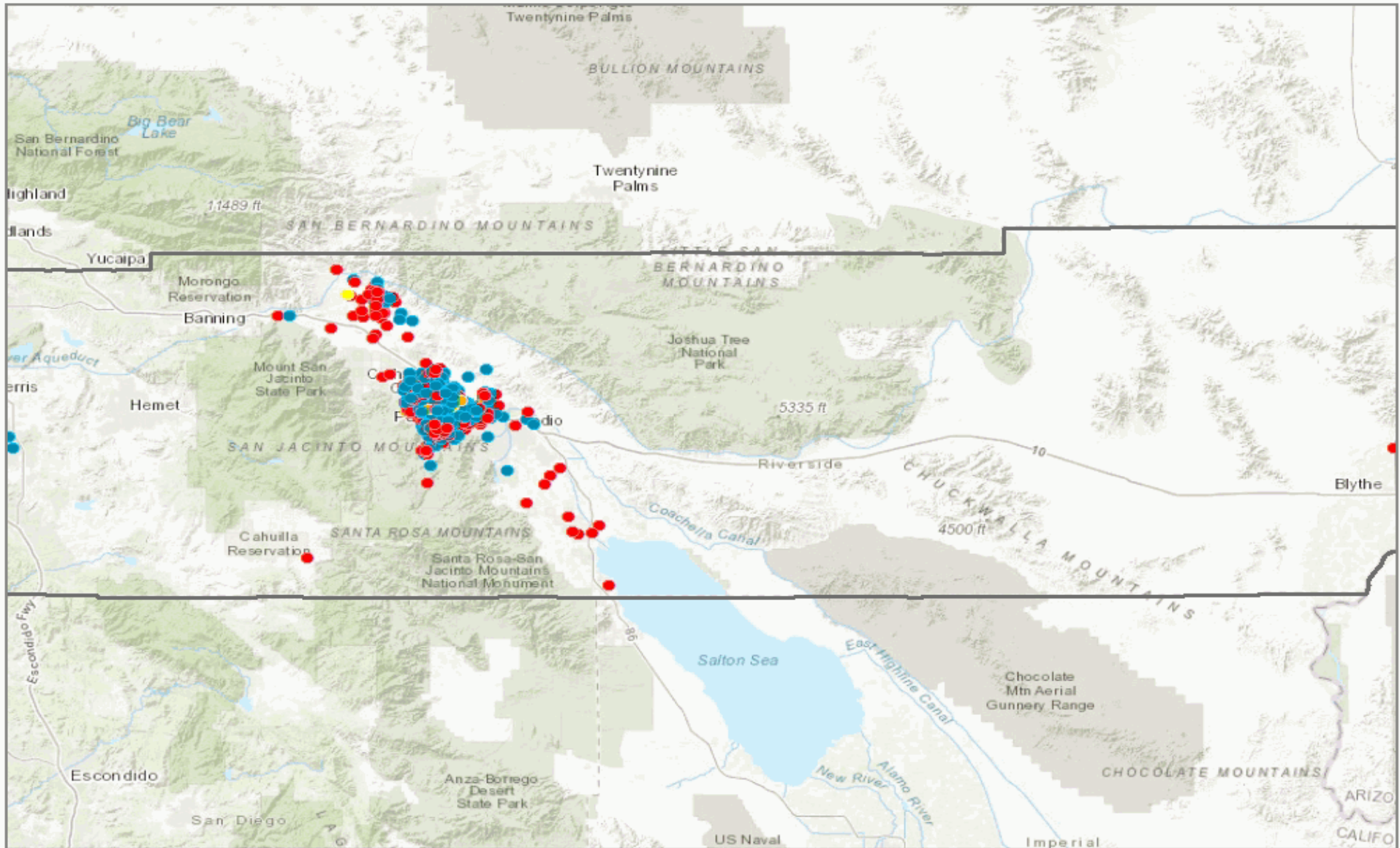
	Com Fire	False Alarm	Haz Mat	Medical	Multi-Fa m Dwelling	Other Fire	Other Misc	Public Service Assist	Res Fire	Rescue	Ringin g Alarm	Standby	Traffic Collision	Vehicle Fire	Wildland Fire	Total
Grand Total	13	649	8	3,752	8	39	4	176	44	17	23	30	220	32	27	5,042

*The numbers provided on this report may reflect multiple unit responses to a single incident.

Last Updated 5/12/2020 1

*Incidents are shown based on the units that responded.

YEAR = 2019 and Unit = 'E71' and UnitStatus = 'Active'



Legend

- Fire
- Medical
- Haz Mat
- Other Misc
- Hazard
- Public Service Assist
- Riverside County
- Reservations
- Fire Station
- Casinos

Riverside County Fire GIS

*The numbers provided on this report may reflect multiple unit responses to a single incident.

Last Updated 5/12/2020 1

*Incidents are shown based on the units that responded.

Jurisdiction within 71's First Due	Home Jurisdiction		Com Fire	False Alarm	Haz Mat	Medical	Multi-Fam Dwelling Fire	Other Fire	Other Misc	Public Service Assist	Res Fire	Rescue	Ringin g Alarm	Standby	Traffic Collision	Vehicle Fire	Wildland Fire	Total
		B10A	0	0	0	1	1	0	0	0	0	0	0	0	1	0	0	3
		B10B	0	3	0	0	0	3	0	1	0	0	0	0	0	0	0	7
		B12A	0	6	0	2	1	0	2	0	2	0	0	0	2	2	1	18
		B12B	2	3	0	3	0	0	0	0	1	0	0	1	1	0	0	11
		B14A	0	0	0	0	1	0	0	0	0	0	0	0	0	0	0	1
		B3109	1	0	0	0	0	0	0	0	0	0	0	0	0	0	0	1
		B3116	0	1	0	0	0	0	0	0	0	0	0	0	0	0	0	1
		B5	0	1	0	0	0	0	0	0	0	0	0	0	0	0	0	1
		B6A	2	1	0	0	0	0	0	0	1	0	0	1	1	0	0	6
		B7A	0	0	1	0	0	0	1	0	0	0	0	1	0	0	0	3
		B7B	1	2	0	0	0	0	0	0	1	0	0	1	0	0	0	5
		BS35	2	0	0	0	0	1	0	0	2	0	0	0	0	0	0	5
		DC1	1	0	0	0	0	0	0	0	0	0	0	0	0	0	0	1
		DC3104	1	0	0	0	0	0	0	0	0	0	0	0	0	0	0	1
	Glen Avon	E17	0	0	0	2	0	0	0	0	0	0	0	0	0	0	0	2
	Moreno Valley	E2	0	0	0	2	0	0	0	0	0	0	0	0	0	0	0	2
	Banning	E20	0	2	0	1	0	0	0	0	0	0	0	0	0	0	0	3
	Cherry Valley	E22	0	3	0	5	0	0	0	0	0	1	0	0	0	0	0	9
	Cabazon	E24	0	0	0	5	0	0	0	0	0	0	0	0	0	0	1	6
	Hemet	E26	0	1	0	0	0	0	0	0	0	0	0	0	0	0	0	1
	Pinyon	E30	0	0	0	7	0	0	0	0	1	0	0	0	1	0	0	9
	La Quinta	E32	1	1	0	1	0	0	0	0	0	0	0	0	0	0	0	3
		E33	3	67	0	264	2	3	1	15	3	1	3	7	12	4	1	386
	Winchester	E34	0	0	1	0	0	0	0	0	0	0	0	0	0	0	0	1
	RVC	E35	2	10	0	39	0	0	0	3	3	0	1	0	3	0	0	61
	RVC/North Palm Springs	E36	0	0	0	4	0	0	0	0	0	0	0	0	0	0	0	4
	RVC/Thermal	E39	0	0	0	3	0	0	0	0	0	0	0	0	0	0	0	3
	RVC/North Shore	E41	0	1	0	4	0	0	0	0	0	0	0	0	0	0	0	5
	RVC/Desert Center	E49	0	0	0	1	0	0	0	0	0	0	0	0	0	0	0	1
	Rancho Mirage	E50	2	15	0	32	1	2	0	2	4	0	0	1	1	0	1	61
	Indian Wells	E55	3	95	0	258	1	2	0	11	2	0	3	6	10	2	0	393
	RVC/Sky Valley	E56	0	0	0	1	0	0	0	0	0	0	0	0	0	0	0	1
	Palm Desert	E67	2	11	0	39	1	1	0	1	0	0	1	0	1	0	1	58
	Rancho Mirage	E69	3	70	0	161	2	2	0	15	3	0	5	2	10	1	0	274
	La Quinta	E70	1	0	0	2	0	0	0	0	0	0	0	0	0	0	0	3
	Palm Desert	E71	3	251	6	2,566	2	9	3	124	4	4	11	16	76	4	1	3,080
	Menifee	E76	0	1	0	2	0	0	0	0	0	0	0	0	0	0	0	3
	C/Lake Riverside/Anza	E77	0	1	0	12	0	0	0	1	0	0	0	0	1	0	0	15
	RVC/Woodcrest	E8	0	0	0	1	0	0	0	0	0	0	0	0	0	0	0	1

**City of Palm
Desert**

Jurisdiction within 71's First Due	Home Jurisdiction		Com Fire	False Alarm	Haz Mat	Medical	Multi-Fam Dwelling Fire	Other Fire	Other Misc	Public Service Assist	Res Fire	Rescue	Ringing Alarm	Standby	Traffic Collision	Vehicle Fire	Wildland Fire	Total
	Indio	E80	2	0	0	2	0	0	0	0	1	0	0	0	1	0	0	6
	RVC/Bermuda Dunes	E81	1	52	0	131	1	1	0	7	1	0	3	1	5	0	0	203
	Indio	E86	0	0	0	8	0	0	0	1	1	0	0	0	0	0	0	10
	Indio	E88	1	0	0	0	0	0	0	0	0	0	0	0	0	0	1	2
	La Quinta	E93	3	10	0	16	1	0	0	0	1	0	0	0	1	1	0	33
	Temecula	E95	0	0	0	6	0	0	0	0	0	0	0	0	0	0	0	6
	Temecula	E96	0	0	0	1	0	0	0	0	0	0	0	0	0	0	0	1
		HM234	0	0	1	0	0	0	0	0	0	0	0	0	0	0	0	1
	Palm Desert	M255	2	0	0	330	0	1	0	2	0	0	0	0	10	1	0	346
	Palm Desert	M33	0	1	0	345	0	0	0	2	0	0	0	0	9	1	0	358
	Rancho Mirage	M50	0	0	0	75	0	0	0	0	1	0	0	0	3	0	0	79
	Indian Wells	M55	1	3	0	350	0	1	0	0	1	0	0	0	11	1	0	368
	Palm Desert	M67	0	1	0	63	0	0	0	0	0	0	0	0	2	0	0	66
	Rancho Mirage	M69	0	2	0	260	0	0	0	3	0	0	0	0	15	0	0	280
	Palm Desert	M71	2	18	4	2,110	2	2	0	15	4	0	0	5	60	0	1	2,223
	Palm Desert	SQ33	0	3	0	12	0	0	0	2	0	0	0	0	0	0	0	17
	VC/North Palm Springs	SQ36	0	1	0	3	0	0	0	0	0	0	0	0	0	0	0	4
	Indio	SQ86	0	0	0	1	0	0	0	0	0	0	0	0	0	0	0	1
	Palm Desert	T33	3	54	1	143	2	2	0	9	4	4	4	3	5	2	1	237
	Indio	T86	1	0	0	1	0	0	0	1	1	0	0	0	0	0	0	4
		WT1	1	0	0	0	0	0	0	0	0	0	0	0	0	0	0	1
		B10A	0	0	0	0	0	0	0	0	1	0	0	0	0	0	0	1
		B12A	0	1	0	1	0	0	0	0	0	0	0	0	0	1	0	3
		B12B	0	0	0	0	0	0	0	0	1	0	0	0	0	0	0	1
		B3116	0	0	0	0	0	0	1	0	0	0	0	0	0	0	0	1
		B6A	0	0	0	0	0	0	0	0	1	0	0	0	0	0	0	1
		BS35	0	0	0	0	0	0	0	0	1	0	0	0	0	0	0	1
		DC3108	0	0	0	0	0	0	0	0	1	0	0	0	0	0	0	1
	Glen Avon	E17	0	0	0	2	0	0	0	0	0	0	0	0	0	0	0	2
	Beaumont	E20	0	0	0	5	0	0	0	0	0	0	0	0	0	0	0	5
	Cherry Valley	E22	0	0	0	2	0	0	0	0	0	0	0	0	0	0	0	2
	RVC/Cabazon	E24	0	0	0	1	0	0	0	0	0	0	0	0	0	0	0	1
	RVC/Pinyon	E30	0	0	0	2	0	0	0	0	0	0	0	0	0	0	0	2
	Palm Desert	E33	0	8	0	87	0	0	0	3	1	0	0	0	3	2	0	104
	RVC/Thousand Palms	E35	0	2	0	10	0	0	0	0	1	0	0	0	0	1	0	14
	RVC/North Shore	E41	0	0	0	1	0	0	0	0	0	0	0	0	0	0	0	1
	Rancho Mirage	E50	0	9	0	72	0	0	0	3	2	0	0	0	0	2	0	88
	Indian Wells	E55	0	0	0	3	0	0	0	1	2	0	0	0	0	0	0	6
	Palm Desert	E67	0	1	0	10	0	0	0	1	2	0	0	0	0	1	0	15

City of

Jurisdiction within 71's First Due	Home Jurisdiction		Com Fire	False Alarm	Haz Mat	Medical	Multi-Fam Dwelling Fire	Other Fire	Other Misc	Public Service Assist	Res Fire	Rescue	Ringin g Alarm	Standby	Traffic Collision	Vehicle Fire	Wildland Fire	Total
Rancho Mirage	Rancho Mirage	E69	0	12	0	105	0	0	0	6	2	0	0	0	1	1	0	127
	La Quinta	E70	0	0	0	1	0	0	0	0	0	0	0	0	0	0	0	1
	Palm Desert	E71	0	41	0	738	0	0	0	23	2	0	1	0	13	2	0	820
	RVC/Bear Creek	E75	0	0	0	0	0	0	1	0	0	0	0	0	0	0	0	1
	C/Lake Riverside/Anza	E77	0	0	0	1	0	0	0	0	0	0	0	0	0	0	0	1
	RVC/Hemet	E78	0	0	0	1	0	0	0	0	0	0	0	0	0	0	0	1
	Indio	E80	0	0	0	0	0	0	0	0	1	0	0	0	0	0	0	1
	RVC/Bermuda Dunes	E81	0	1	0	4	0	0	0	0	0	0	0	0	0	0	0	5
	Indio	E86	0	0	0	4	0	0	0	0	0	0	0	0	0	0	0	4
	Indio	E88	0	0	0	0	0	0	0	0	1	0	0	0	0	0	0	1
	La Quinta	E93	0	0	0	1	0	0	0	0	1	0	0	0	0	0	0	2
	Palm Desert	M255	0	0	0	27	0	0	0	0	0	0	0	0	0	0	0	27
	Palm Desert	M33	0	0	0	120	0	0	0	0	1	0	0	0	4	0	0	125
	Rancho Mirage	M50	0	0	0	91	0	0	0	0	1	0	0	0	4	0	0	96
	Indian Wells	M55	0	0	0	18	0	0	0	0	0	0	0	0	0	0	0	18
	Palm Desert	M67	0	0	0	26	0	0	0	0	0	0	0	0	0	0	0	26
	Rancho Mirage	M69	0	0	0	167	0	0	0	1	0	0	0	0	1	1	0	170
	Palm Desert	M71	0	1	0	598	0	0	0	5	1	0	0	0	9	0	0	614
	Palm Desert	T33	0	6	0	38	0	0	0	1	2	0	0	0	1	1	0	49
Indio	T86	0	0	0	0	0	0	0	0	1	0	0	0	0	0	0	1	
Riverside County Unincorporat ed Area		B10A	0	1	0	0	0	0	0	0	0	0	0	0	1	0	0	2
		B10B	0	0	0	0	0	0	0	0	0	0	0	0	0	1	0	1
		B12A	0	1	0	0	0	0	0	0	0	0	0	0	2	0	0	3
		B12B	0	0	0	0	0	0	0	0	0	0	0	0	0	0	1	1
		B3110	0	1	0	0	0	0	0	0	0	0	0	0	0	0	0	1
		B6A	0	1	0	0	0	0	0	0	0	0	0	0	0	0	0	1
		B7A	0	0	0	0	0	1	0	0	0	0	0	0	0	0	0	1
	RVC/Cherry Valley	E22	0	1	0	0	0	0	0	0	0	0	0	0	0	0	0	1
	Palm Desert	E33	0	1	0	0	0	0	0	0	0	0	0	0	1	0	1	3
	RVC/Thousand Palms	E35	0	8	0	0	0	1	0	1	0	0	0	0	12	2	0	24
	VC/North Palm Springs	E36	0	0	0	0	0	0	0	0	0	0	0	0	0	1	0	1
	Rancho Mirage	E50	0	1	0	0	0	0	0	0	0	0	0	0	1	0	1	3
	Indian Wells	E55	0	1	0	0	0	0	0	0	0	0	0	0	2	0	1	4
	Palm Desert	E67	0	1	0	0	0	0	0	0	0	0	0	0	0	0	0	1
	Rancho Mirage	E69	0	4	0	1	0	0	0	0	0	0	0	0	10	1	2	18
	Palm Desert	E71	0	11	0	8	0	0	0	1	0	0	0	0	25	5	3	53
	C/Lake Riverside/Anza	E77	0	0	0	0	0	0	0	0	0	0	0	0	1	0	0	1
	Indio	E80	0	0	0	0	0	1	0	0	0	0	0	0	2	0	0	3
	RVC/Bermuda Dunes	E81	0	4	0	7	0	1	0	0	0	0	0	0	20	5	1	38

Jurisdiction within 71's First Due	Home Jurisdiction		Com Fire	False Alarm	Haz Mat	Medical	Multi-Fam Dwelling Fire	Other Fire	Other Misc	Public Service Assist	Res Fire	Rescue	Ringin Alarm	Standby	Traffic Collision	Vehicle Fire	Wildland Fire	Total	
	Indio	E87	0	1	0	0	0	0	0	0	0	0	0	0	0	0	0	0	1
	RVC/Home Gardens	E9	0	0	0	0	0	0	0	0	0	0	0	0	1	0	0	0	1
	La Quinta	E93	0	0	0	0	0	1	0	0	0	0	0	0	1	0	0	0	2
	Indio	M80	0	0	0	0	0	0	0	0	0	0	0	0	1	0	0	0	1
	Palm Desert	SQ33	0	0	0	1	0	0	0	0	0	0	0	0	0	0	0	0	1
	RVC/North Palm Springs	SQ36	0	0	0	0	0	0	0	0	0	0	0	0	1	0	0	0	1
	Palm Desert	T33	0	0	0	0	0	0	0	0	0	0	0	0	2	0	0	0	2
	Indio	T86	0	1	0	0	0	0	0	0	0	0	0	0	0	0	0	0	1
Grand Total			47	811	14	9,428	18	35	9	261	68	10	32	45	361	46	19	11,204	

Station 71 Call Volume and Industry Standard Response Time Comparison

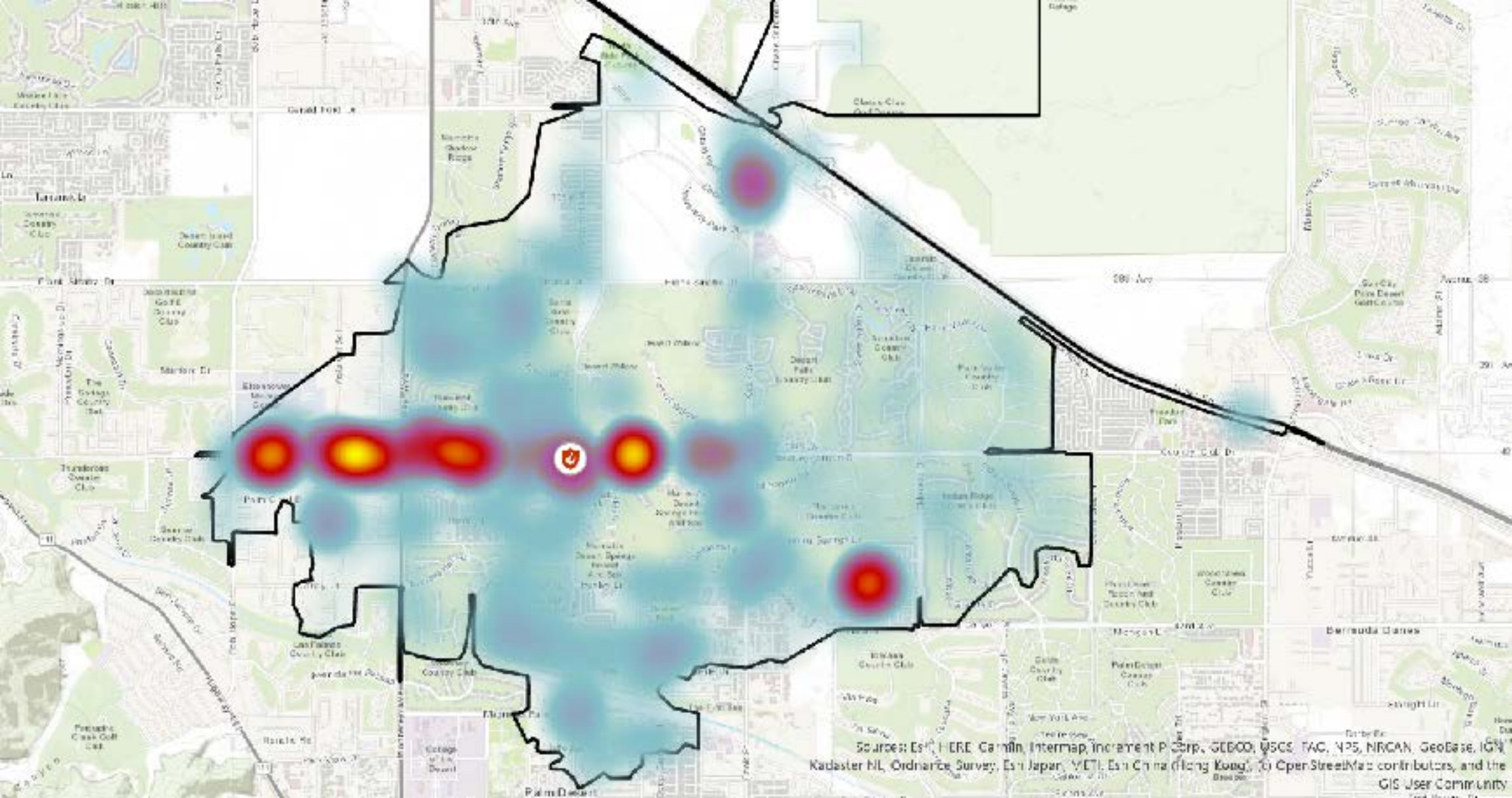
Station 71's First Due - This section shows how many calls were generated in 71's First due regardless of jurisdiction	2015	2016	2017	2018	2019	
City of Palm Desert	3458	3722	3915	3922	4033	↑ 17%
Rancho Mirage	998	892	930	1016	1086	↑ 9%
Riverside County	56	56	52	54	83	↑ 48%
Total calls generated. In 71's First Due	4512	4670	4897	4992	5202	↑ 15%
This Table shows how many calls Engine 71 ran in their First Due. It is important to note that the jurisdictions listed below are within the 4 minute bubble for Station 71 and the Dept. dispatches the closest most						
City of Palm Desert	2713	3003	3321	3106	3080	↑ 14%
Rancho Mirage	765	681	732	790	820	↑ 7%
Riverside County	39	41	40	32	53	↑ 36%
Total calls run by E71 in their first due	3517	3725	4093	3928	3953	↑ 12%
Total calls run by E71 all Jurstidcions	4232	4632	4937	4849	5040	↑ 19%
This Table shows the difference between calls generated in 71's First Due and those run by E71. This table further represents other resources regardless of jurisdiction running calls into 71's First Due						

City of Palm Desert	745	719	594	816	953	↑ 28%
Rancho Mirage	233	211	198	226	266	↑ 14%
Riverside County	17	15	12	22	30	↑ 76%
Total Request for Outside Resources - This line represents how many times an engine other than Engine 71 ran the emergency response.	995	945	804	1064	1249	↑ 26%
% of 'code 3' calls 0 - 5 Minutes within PD Jurisdiction - This line represents the % of calls where an emergency vehicle arrives within 0 - 5 minutes to 'code 3' calls within the entire City of Palm Desert. Global View	85.2%	84.7%	84.3%	83.9%	81.8%	
% of 'code 3' calls 0-5 Minutes Station 71's Jurisdiction - This line represents the % of calls that an emergency vehicle arrives within 0 - 5 minutes within Station 71's Jurisdiction. **Note** several months during 2018, a second ambulance was temporarily assigned to Station 71 due to a remodel at the Indian Wells Fire Station. This accounts for the 3% increase.	84.6%	83.9%	83.5%	86.5%	82.8%	

<p>% of 'code 3' calls 0-5 Minutes Engine 71, in 71's Jurisdiction - This line Represents % of calls where E71 arrived within 0 - 5 Minutes in Station 71's Jurisdiction. This line reinforces that Station 71 is in the right location but that the amount of redundant calls (calls at the same time as Engine 71 where another Engine has to handle) is steadily lowering the percentage of calls where an emergency vehicle arrives within 0 - 5 minutes</p>	89.5%	88.7%	88.2%	91.4%	88.7%	
---	-------	-------	-------	-------	-------	--

Station 33 Year	2015	2016	2017	2018	2019
% of 'code 3' calls 0 - 5 Minutes within PD Jurisdiction - This line represents the % of calls where an emergency vehicle arrives within 0 - 5 minutes to 'code 3' calls within the entire City of Palm Desert. Global View	85.2%	84.7%	84.3%	83.9%	81.8%
% of 'code 3' calls 0-5 Minutes Station 33's Jurisdiction - This line represents the % of calls that an emergency vehicle arrives within 0 - 5 minutes within Station 33's Jurisdiction. * Note, T33 also responds out of Station 33 if it is closer or Engine 33 is committed to another emergency.	94.1%	94.4%	93.0%	91.4%	91.1%
% of 'code 3' calls 0-5 Minutes Engine 33, in 33's Jurisdiction - This line Represents % of calls where E33 arrived within 0 - 5 Minutes in Station 33's Jurisdiction.	94.7%	95.6%	93.7%	93.6%	92.2%
% of 'code 3' calls 0-5 Minutes Truck 33, in 33's Jurisdiction - This line Represents % of calls where T33 arrived within 0 - 5 Minutes in Station 33's Jurisdiction.	94.9%	94.2%	94%	90.4%	90.7%

Station 67 Year	2015	2016	2017	2018	2019
% of 'code 3' calls 0 - 5 Minutes within PD Jurisdiction - This line represents the % of calls where an emergency vehicle arrives within 0 - 5 minutes to 'code 3' calls within the entire City of Palm Desert. Global View	85.2%	84.7%	84.3%	83.9%	81.8%
% of 'code 3' calls 0-5 Minutes Station 67's Jurisdiction - This line represents the % of calls that an emergency vehicle arrives within 0 - 5 minutes within Station 67's Jurisdiction.	83.7%	83.4%	83.5%	81.2%	76.9%
% of 'code 3' calls 0-5 Minutes Engine 67, in 67's Jurisdiction - This line Represents % of calls where E67 arrived within 0 - 5 Minutes in Station 67's Jurisdiction.	85.8%	84.9%	85%	82.6%	78.5%



Sources: Esri, HERE, Garmin, Intermap, increment P Corp., GEBCO, USGS, TAC, NPS, NRCAN, GeoBase, IGN, Kadaster NL, Ordnance Survey, Esri Japan, METI, Esri China (Hong Kong), Swisstopo, OpenStreetMap contributors, and the GIS User Community