

CITY OF PALM DESERT
PUBLIC WORKS DEPARTMENT
MEMORANDUM

Date: June 25, 2025

From: Maria Gonzalez, Management Analyst

To: Mayor Harnik and City Council

Subject: Supplemental Materials - Resolutions Authorizing the Levy of a Special Tax in Community Facilities Districts Nos. 2021-1 and 2005-1 (University Park) for Fiscal Year 2025/2026 (Items 13k and 13l)

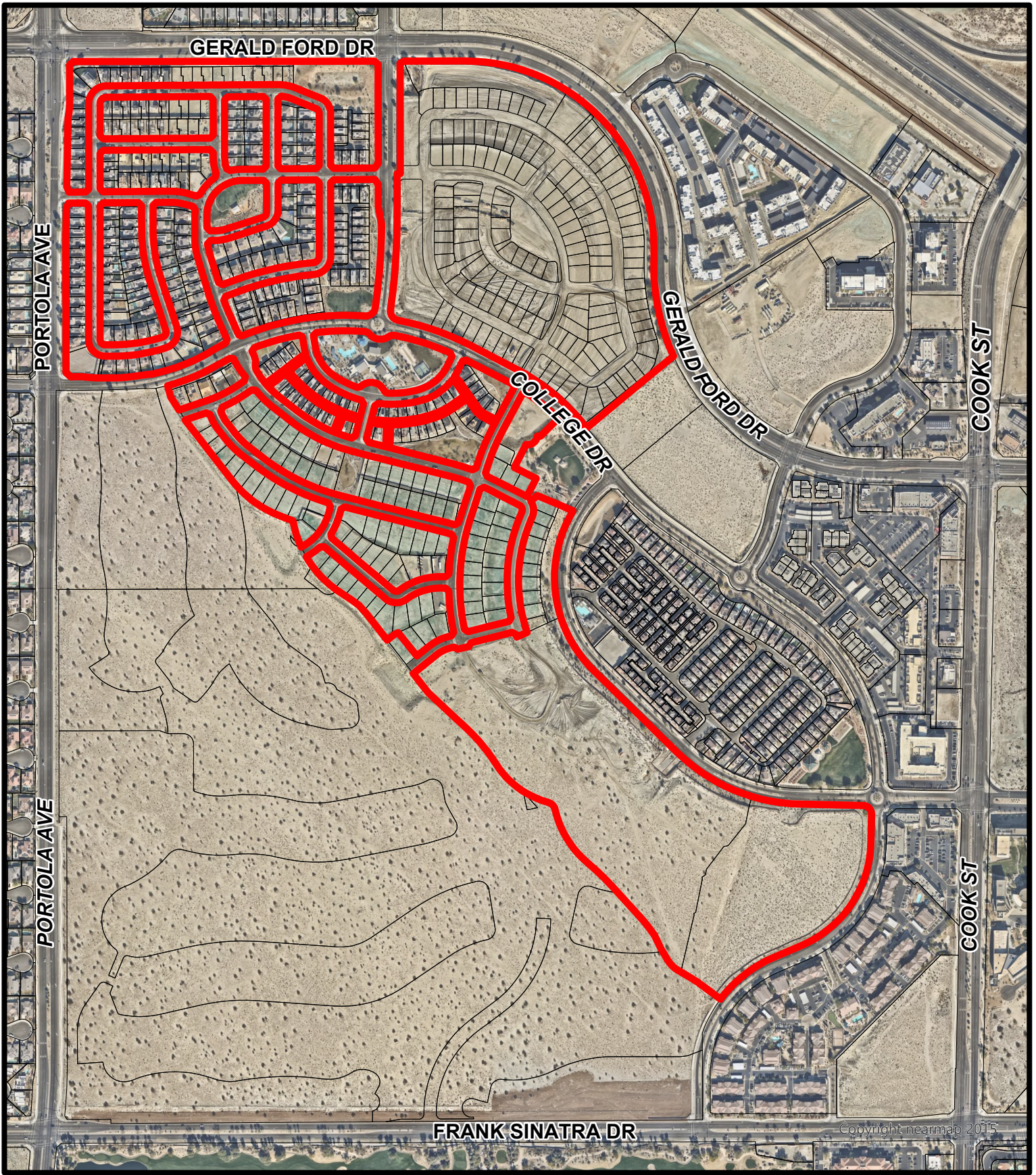
As referenced in the staff report included in the agenda packet for the June 26, 2025, City Council meeting, attached are the correctly labeled maps of Community Facilities Districts (CFDs) Nos. 2021-1 and 2005-1.

The maps were incorrectly labeled and therefore, inadvertently, attached to the wrong staff report.


Requested Council Action

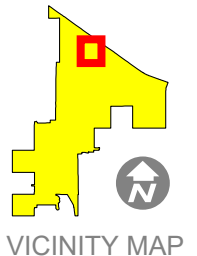
Staff requests acceptance of the attached maps for review in conjunction with their respective agenda items:

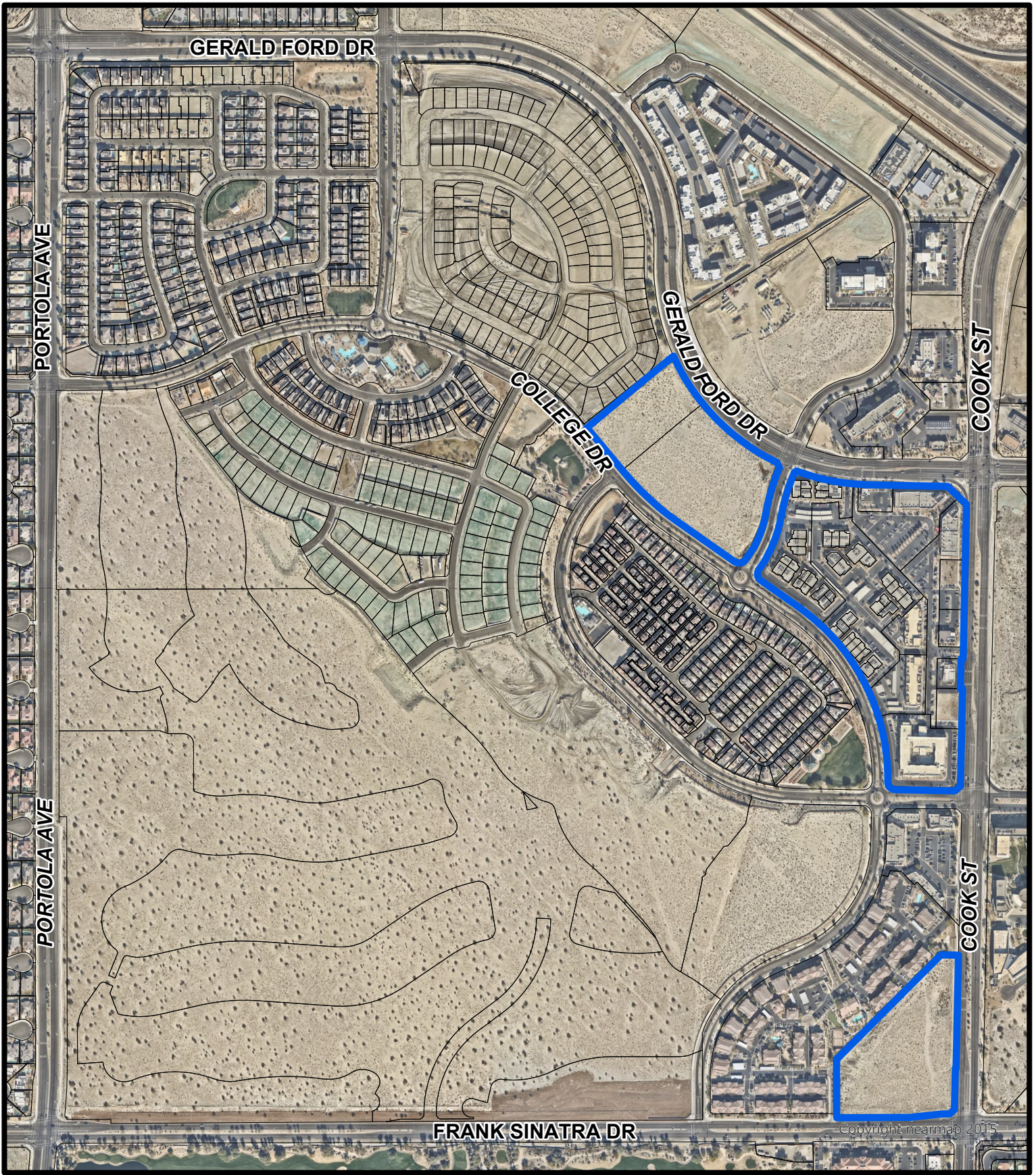
- CFD 2021-1 Map outlined in red for Item 13k
- CFD 2005-1 Map outlined in blue for Item 13l




Community Facilities District

 CFD 2021-1 Boundary





Community Facilities District

 CFD 2005-1 Boundary

