

Fehr & Peers Palm Desert Mobility Element Update

Portola Interchange
Discussion

Jason Pack, Brian Wolfe | 06.26.2025



Agenda

- 01 Mobility Element Background
- 02 Portola Interchange History
- 03 Proposed Scope of Work
- 04 Next Steps

SECTION 01

Mobility Element Background

General Plan History

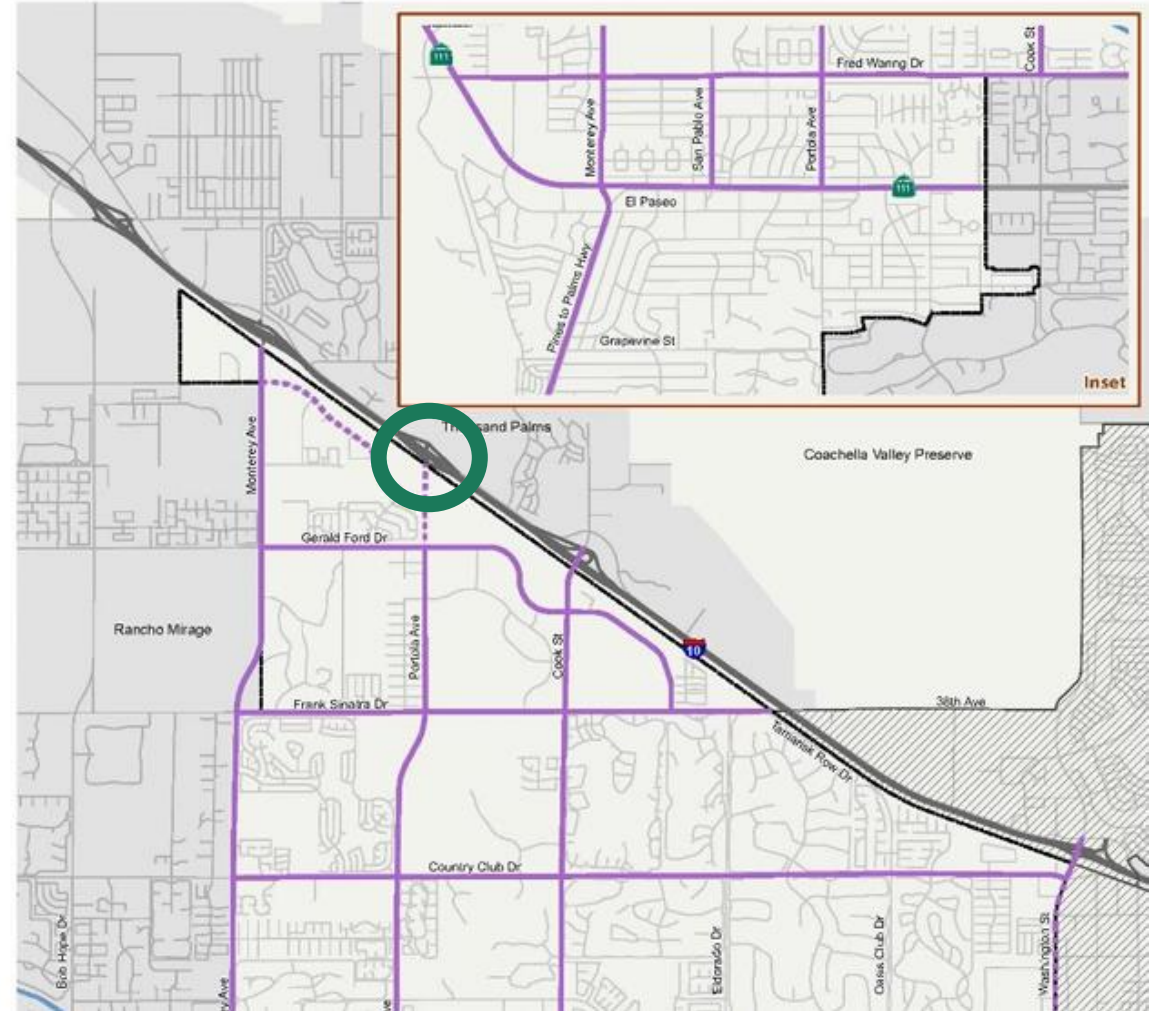
Current General Plan Adopted in 2016

- In 2024 City Engaged Fehr & Peers to Update the Mobility Element
 - Clean Up Roadway Cross-Section Conflicts Between General Plan and Area/Specific Plans
 - Consistency with ATP, Vision Zero, etc.
 - Address New Legislative Requirements
- Held Council Workshop/Presentation in February



General Plan History

- Current Element Shows the Portola Avenue Interchange
- 2024 Council Resolution to deprioritize Project due to lack of available funding at state/federal level for new roadways



SECTION 02

Portola Interchange History

Portola Interchange History – RCTD



Estimated Construction Cost: \$88M in 2018 Dollars – Costs have escalated since

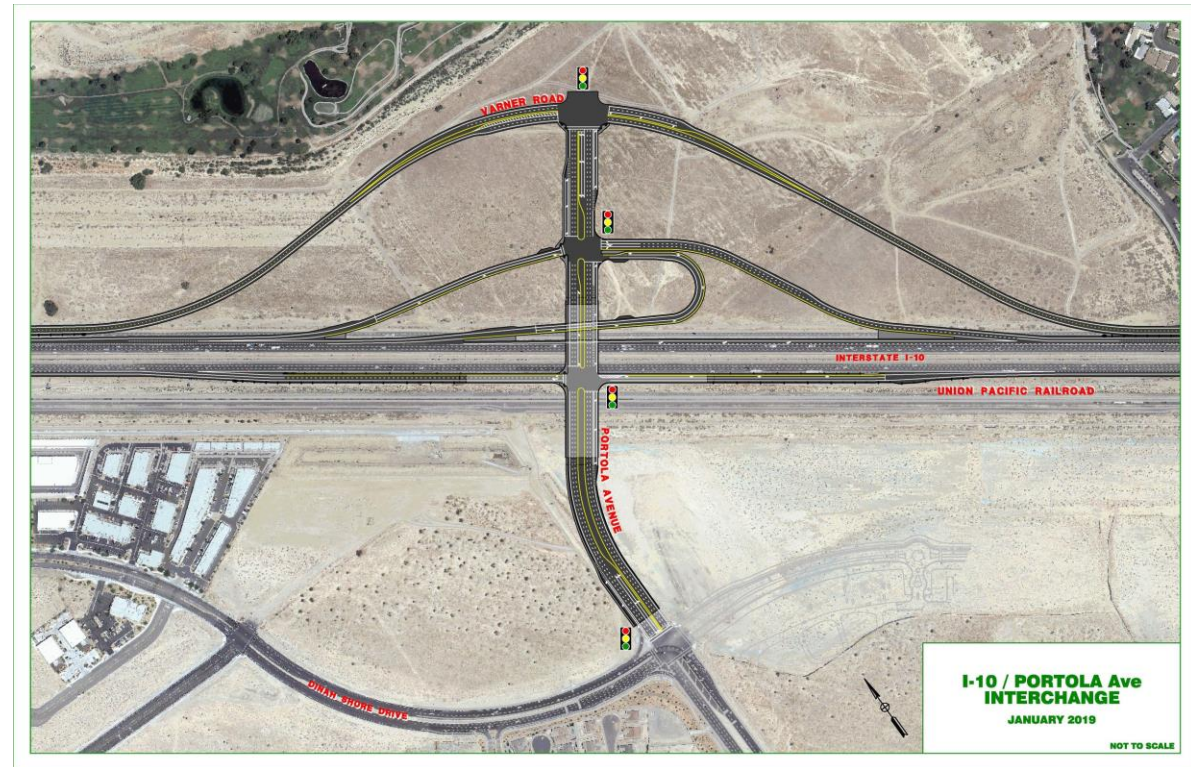
Project Schedule

- Environmental Phase Clearance: April 2018 (Complete)
- Final Design: April 2022 (Complete)
- Right of Way: TBD*
- Construction Start: TBD*
- Construction End: TBD*

* Pending Funding

Portola Interchange History

- Minimal Progress Since April 2022 (funding and changing priorities)
- New Development in this Area
- Coordination with UPRR Required
 - Understanding that UPRR desires additional track capacity in this area making the eastbound ramp improvements difficult to implement



How this Ties into the Mobility Element

- **Should we include the Portola Interchange in the City's future transportation network?**
 - Influences everything in the Mobility Element: roadway classifications, truck routes, capital project prioritization

With Portola Interchange	Without Portola Interchange
<ul style="list-style-type: none">+ Provide direct path of travel+ Potential to lower VMT+ Support development of northern portion of the City- Construction costs- Higher traffic volumes on Portola Ave	<ul style="list-style-type: none">+ Less traffic growth on Portola Ave+ Funding available to improve existing roadways- Additional congestion at Monterey Ave and Cook St interchanges (improvements needed)

SECTION 03

Proposed Scope of Work

Proposed Scope of Work

- Civil to Review Design for Updates
 - Updated with New Highway Design Manual Requirements
 - Updated Cost Estimate
 - Updated Schedule for Implementation
- Identify Funding Opportunities (Grants)
- Review Impacts to Other Facilities if Interchange is Removed (Including Costs)

Task	Fee
Task 1: Meetings and Coordination	\$3,000
Task 2: Project Document and Cost Estimate Review	\$5,000
Task 3: Funding Opportunities Review	\$5,000
Task 4: No Build Review and Planning Level Cost Estimates	\$5,000

SECTION 04

Next Steps

Next Steps & Council Request

- Fehr & Peers needs direction as to whether the Portola Interchange should remain in the Mobility Element
- Proposed scope of work provides improved information for Council to make that decision
- If additional scope is authorized by Council:
 - Two months to complete effort
 - Will come back to Council with a presentation and ask for guidance
- If additional scope is not authorized by Council:
 - Council to provide direction on which way to proceed r.e. Portola Interchange

Questions?

Photo References:

Palm Desert General Plan Document

Riverside County Transportation
Department:
<https://rcprojects.org/portola>

