



PALM DESERT

CITY OF PALM DESERT REQUEST FOR QUALIFICATIONS

PUBLIC ART PROJECT FOR ROUNDABOUT AT SAN PABLO AVENUE AND EAST ENTRANCE OF COLLEGE OF THE DESERT

Artist Eligibility

The City of Palm Desert, California, and the Palm Desert Cultural Arts Committee invites experienced artists residing in the U.S., Canada, or Mexico to apply for a major public art commission. Applicants must be 18 years of age or older.

About Palm Desert

Located just over 100 miles east of Los Angeles, Palm Desert is a premier resort destination and thriving year-round community at the heart of California's Coachella Valley—a region made up of nine distinct cities. To the west lies Palm Springs, celebrated for its midcentury modern architecture and storied Hollywood history. To the east is Indio, known for its agricultural roots and vibrant murals featuring contemporary Latinx art.

Palm Desert sits at the center of the Valley, offering a blend of these influences with its own distinctive, upscale character. Surrounded by dramatic mountain ranges and wide-open desert, the city is a dynamic hub of nature, education, and culture. It is home to the Coachella Valley's three institutions of higher learning, the renowned McCallum Theatre—the region's largest indoor performing arts venue—and El Paseo, a premier shopping and dining district known as the "Rodeo Drive of the Desert." El Paseo also features a rotating outdoor exhibition of public art, showcasing 18 sculptures by artists, a tradition that has been ongoing since 1992.

A New Vision for San Pablo Avenue

San Pablo Avenue reflects Palm Desert's ongoing transformation into a more connected, vibrant, and livable city. Reimagined in 2020, this mile-long corridor—running north from El Paseo and Highway 111—links key destinations including College of the Desert, City Hall, and Civic Center Park with nearby residential neighborhoods and commercial districts. The revitalized avenue now features pedestrian-friendly landscaping, dedicated bike lanes, outdoor dining patios, pocket parks with interactive elements, and community gardens. With a walkable, human-scaled design and strong potential for mixed-use development, San Pablo Avenue is emerging as the heart of Palm Desert's civic and cultural life.

About the Project

The Committee invites artists to create a signature sculptural installation for the northern roundabout on San Pablo Avenue—a key gateway that marks the transition between Palm Desert's civic and cultural core and its surrounding residential and commercial neighborhoods. Serving as a visual anchor at the north end of the revitalized corridor, the sculpture(s) will contribute to San Pablo's identity as a dynamic, pedestrian-friendly city center. Artists may propose a single large-scale piece or a series of coordinated sculptures. Works that incorporate lighting are encouraged to enhance nighttime visibility and impact. Water and kinetic features will not be considered.

Artwork Design, Safety, and Durability Requirements

- **Sculpture Height – Single Work:** Sculpture installed at the center of the roundabout must be between **13 feet and 25 feet tall**.
- **Sculpture Height – Multiple Works:** If proposing multiple sculptures, each piece must be between **13 feet and 15 feet tall** to remain within the roundabout's designated breakaway zone.
- **Workable Area:** The roundabout's unpaved center is 40 feet in diameter, with a 32.5-foot diameter usable for artwork, as shown in Exhibit A.
 - o **Design Approach:** Artwork should be designed "in the round", meaning it looks complete and engaging from all angles.
- **Site Grading:** The roundabout is graded flat. The top-of-curb elevation varies by less than 0.1 feet in any direction (north, south, east, or west), as shown in Exhibit A.
- **Foundation Restrictions:** Some areas of the roundabout are unavailable for foundations due to underground utilities. Coordination with local utility agency will be required. These areas are identified in Exhibit B.
- **Driver Safety:** Artwork must not distract drivers or create disorientation. Highly reflective materials are discouraged.
- **Visibility:** The sculpture must maintain clear sightlines for drivers and pedestrians. It must enhance, not compromise, site safety.
- **Scale and Detail:** Artwork should be bold enough to capture the attention of drivers but not so intricate that it requires close viewing or prolonged inspection.
- **Materials:** Artwork must be made from durable, permanent outdoor materials that are:
 - o Safe for public environments
 - o Low maintenance
 - o Proven effective in similar public art installations
- **Weather Resistance:** The sculpture must withstand extreme desert conditions, including:
 - o High winds
 - o Intense sun
 - o Summer temperatures over 110°F. Artists are encouraged to research materials and colors for proven desert durability.
- **Security:** Artwork must be designed to discourage theft and vandalism.
- **Public Appropriateness:** Artwork must be suitable for all ages.
- **Breakaway Design:** Sculptures must include breakaway connections (e.g., bolts) between the sculpture and its foundation to meet traffic safety standards.
- **Pedestrian Activity:** The roundabout is not intended for pedestrian access. Interactive features and designs that encourage people to stop or take selfies are discouraged.
- **Prohibited Features:** Water elements and kinetic (moving) features are not allowed.

Photos of the roundabout are outlined in Exhibit C. Additional construction plans are available upon request.

How to Apply

Interested artists or artist teams must apply through the project listing on www.CallForEntry.org.

Submission Requirements

All applicants must provide the following materials:

1. Artist Qualifications
 - a. Artist Statement (maximum one page) – Describe your conceptual approach to public art and this project.
 - b. Current Resume (maximum two pages per artist) – Include relevant public art experience.
 - c. Professional References:
 - i. One client who can verify the successful completion of at least one public art project (including contact information).
 - ii. Two additional professional references (not the same as the client above).
2. Work Samples
 - a. Five high resolution images of relevant, comparable completed work.
 - b. Ten high resolution images of recently completed artwork.
 - c. Image list – Identify each uploaded image by file name and include:
 - i. Title
 - ii. Medium
 - iii. Completion date
 - iv. Dimensions (H x W x D)
 - v. Brief description
3. Project Proposal
 - a. Conceptual Design Drawings – Include artwork dimensions and proposed placement within the roundabout.
 - b. Itemized Project Budget Estimate – Include anticipated costs for all phases of the project.
 - c. Proposed Timeline – Indicate how long the work would take from contract execution to installation.
 - d. Material Description – List all materials to be used and explain their durability in extreme weather.
 - e. Fabrication Plan – Indicate whether artist will self-fabricate the artwork or contract with a third party. If contracting, please:
 - i. Name the fabricator
 - ii. Describe their qualifications
 - iii. Explain your oversight role in the process
 - f. Lighting Details (if applicable) – Include wattage, lumens, and color temperature of any proposed lighting.
 - g. Foundation Design – Provide a general explanation of the foundation concept and confirm your ability to have a California-licensed Professional Engineer review, approve the design and structural calculations, and communicate with local utility agency.
 - h. Maintenance Plan – Describe any anticipated maintenance requirements.

Project Budget

The budget for this project is \$200,000. The selected artist or artist team will be responsible for the design, engineering, fabrication, transportation, and oversight of the installation. The available budget must cover all artists' expenses including artist fees, taxes, insurance,

materials, tools, travel, expense contingency, and other associated costs. Installation, uplighting costs, and permit fees will be covered by the City.

Selection Process

The Cultural Arts Committee will select up to three finalists for the project. All finalists will be required to develop additional presentation materials and a maquette no higher than two feet. Oral presentations will be scheduled in person or via Zoom video call. The City will reimburse artists for the costs associated with creation of the maquette, up to \$500. Invoice, including receipts, must be provided for reimbursement.

The selection criteria are as follows:

- Proposed artwork exhibits artistic merit, quality, and innovative design.
- Proposed artwork is appropriate to site size and materials.
- Proposed artwork meets all requirements of this Request for Qualifications.
- Safety of proposed artwork is approved by the City's Public Works Department.

A community engagement survey will be conducted to gather local input for the City Council. The final recommendation to Council will include both the Cultural Arts Committee's selection and the community's feedback. The City Council will make the final decision on the artwork. The selected artist(s) must execute the City's Agreement (draft copy available upon request).

Application Deadline

Applications must be received via www.callforentry.org by Thursday, September 4, 2025, at 11:59 p.m. (Mountain Zone Time).

Submittal Timeline *(subject to change at the City's discretion)*

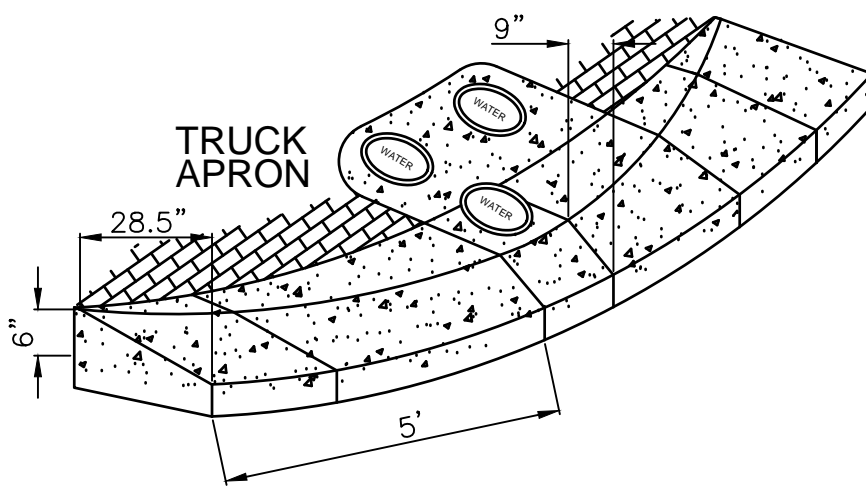
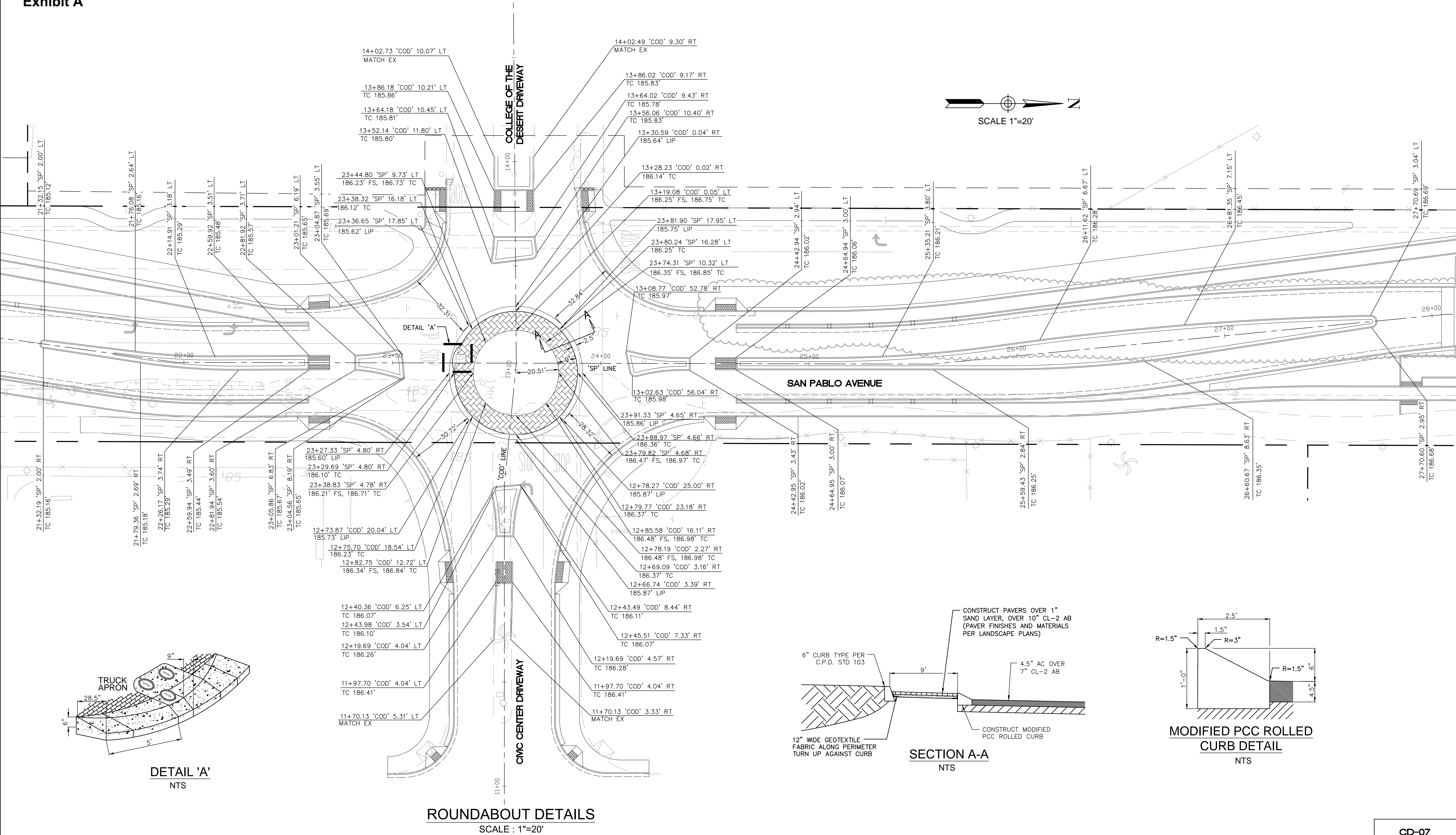
Timeline	Date
Release Request for Qualifications	July 1, 2025
Application deadline	Thursday, September 4, 2025, at 11:59 p.m. (Mountain Zone Time)
Review of Applications by Cultural Arts Committee	October through November 12, 2025
Notification of Three Finalists	Week of November 17, 2025
Finalist Presentations to the Cultural Arts Committee	Wednesday, January 14, 2026
Community Engagement Survey	December 2025 – January 2026
Cultural Arts Committee Recommendation to the City Council	February – March 2026
Notification of Selected Artist	February – March 2026
Execution of Artist Agreement	April 2026
Artwork Installation Deadline	April – May 2027 or Fall 2027**

** Preferred completion and installation by April-May 2027 or Fall 2027, depending on the timeline proposed by the selected artist and approved by the City.

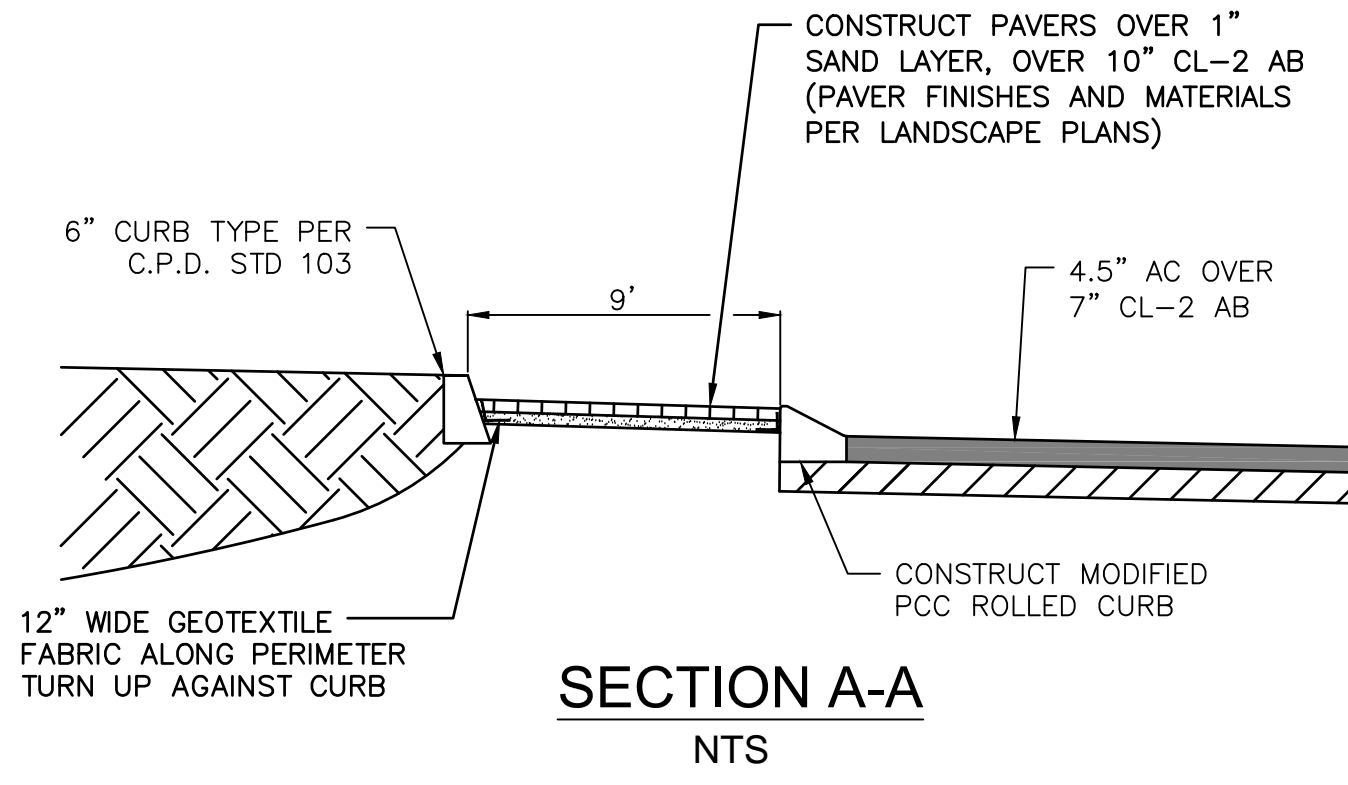
Additional Information

For additional information on this project, please contact Erica Powell at 760-776-6346, or via email at epowell@palmdesert.gov

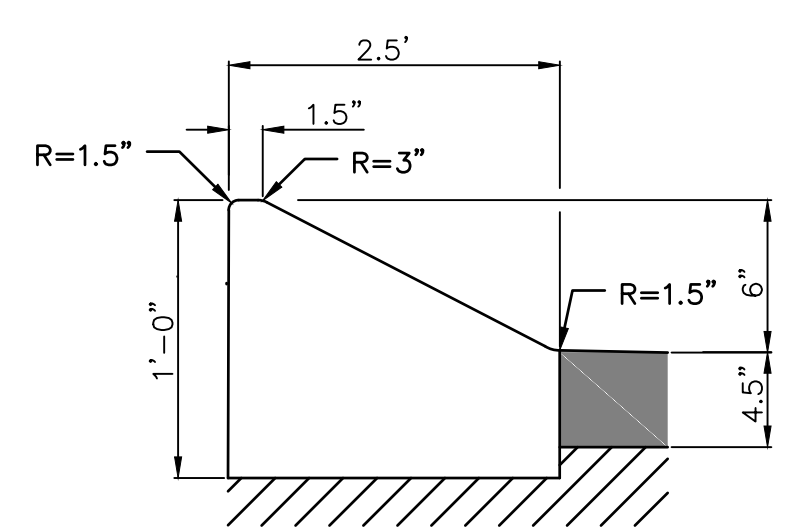
Disclaimer: *The City of Palm Desert reserves the right, at any time, to modify this Request for Qualifications, to modify the City's Agreement, to reject any or all proposals, and to re-open the competition. The final artwork becomes the property of the City, and the City receives all rights to reproduce the artwork.*



DETAIL 'A'
NTS



SECTION A-A
NTS



MODIFIED PCC ROLLED
CURB DETAIL
NTS



BENCHMARK: P.D. #119
ELEVATION: 226.821 FT DATUM: NAVD88
LOCATION: 2" UCS&GS BRASS DISC N.E. CORNER OF SAN PABLO AND HWY 111 ON TOP OF CONCRETE DRAIN STRUCTURE (2 FT ABOVE GRADE), 4.4 FT SOUTHWEST OF NORTHEAST SIDE, 5.5 FT NORTHWEST OF CURB.
(NAVD 88)
BASIS OF BEARINGS: THE CENTERLINE OF SAN PABLO AVENUE BEING N0°06'08.95"E.

ENGINEER			REVISIONS		CITY	
MARK	BY	DATE			APPR.	DATE



DEDOKKEN ENGINEERING
1450 Frazee Road, Suite 100, San Diego, CA 92108
PH: 619-514-6377 FAX: 619-514-8008

PREPARED UNDER THE DIRECT SUPERVISION OF:
John Klemunes DATE: 6/22/20
JOHN A. KLEMUNES, R.C.E. NO. C60728 EXP. 12/31/20



CITY OF PALM DESERT
CONSTRUCTION DETAIL
SAN PABLO AVENUE
PHASE 2 STREETSCAPE IMPROVEMENTS
LEGAL DESCRIPTION (I.E. LOCATED IN A PORTION OF THE NW 1/4 OF SECTION 19, T5S, R6E, S8BM)

CD-07	
SHEET	20
OF	116
SHEETS	
CITY FILE NUMBER	



Exhibit B

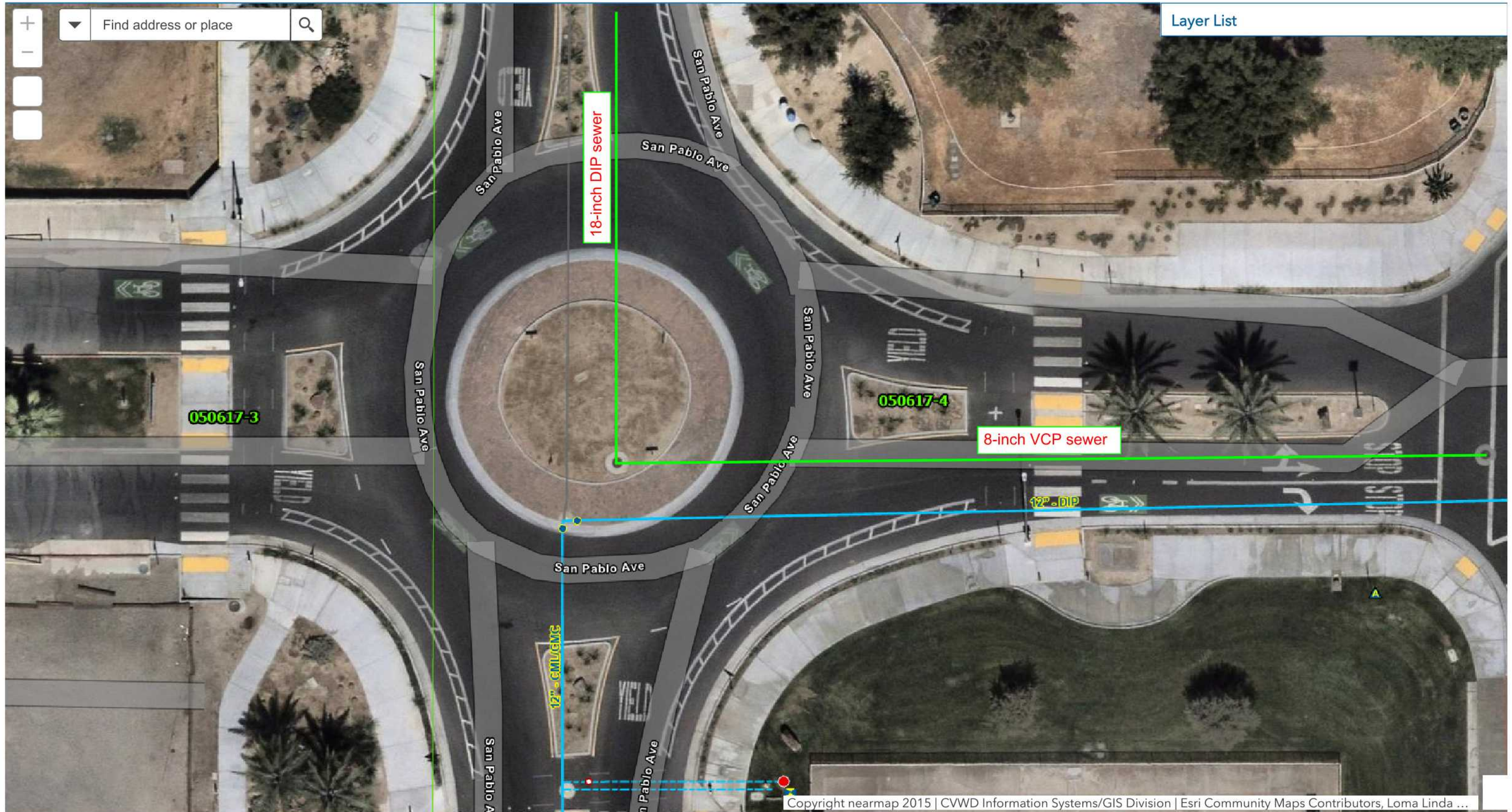


Exhibit C

San Pablo Phase II Roundabout Location: San Pablo and entrances to College of the Desert/YMCA





