

COMMUNITY PARK UPDATE PRESENTATION

CITY OF PALM DESERT

City Council

Interwest + Calvin, Giordano & Associates, Inc.



Community Park Naming

Resolution 2015-33

- May 14, 2015, Parks & Facilities Naming Policy

Naming Principles:

- A distinct geographic, environmental or developmental feature
- A neighborhood, community, or access street
- A name historical significance to the facility
- A reflection of the ethnic diversity of the community
- A person or family who has contributed to the community or facility
- A significant donor or corporate entity

Naming Policy Procedure:

- Parks and Recreation Committee to review and make a recommendation to City Council
- City Council final approval

- 2024, Park Naming Subcommittee was formed
- On January 3, 2025, the Parks and Recreation Committee recommended approval to name the Community Park after **Dave Erwin**
- **Dave Erwin**'s legacy and contributions to the community align with the core values and mission of the parks, making him an ideal namesake for this important public space.
- **Dave Erwin**'s family is in support

Community Park Final Concept Plan

- 01 What are the proposed changes
- 02 Community feedback
- 03 Next Steps

What are the proposed changes

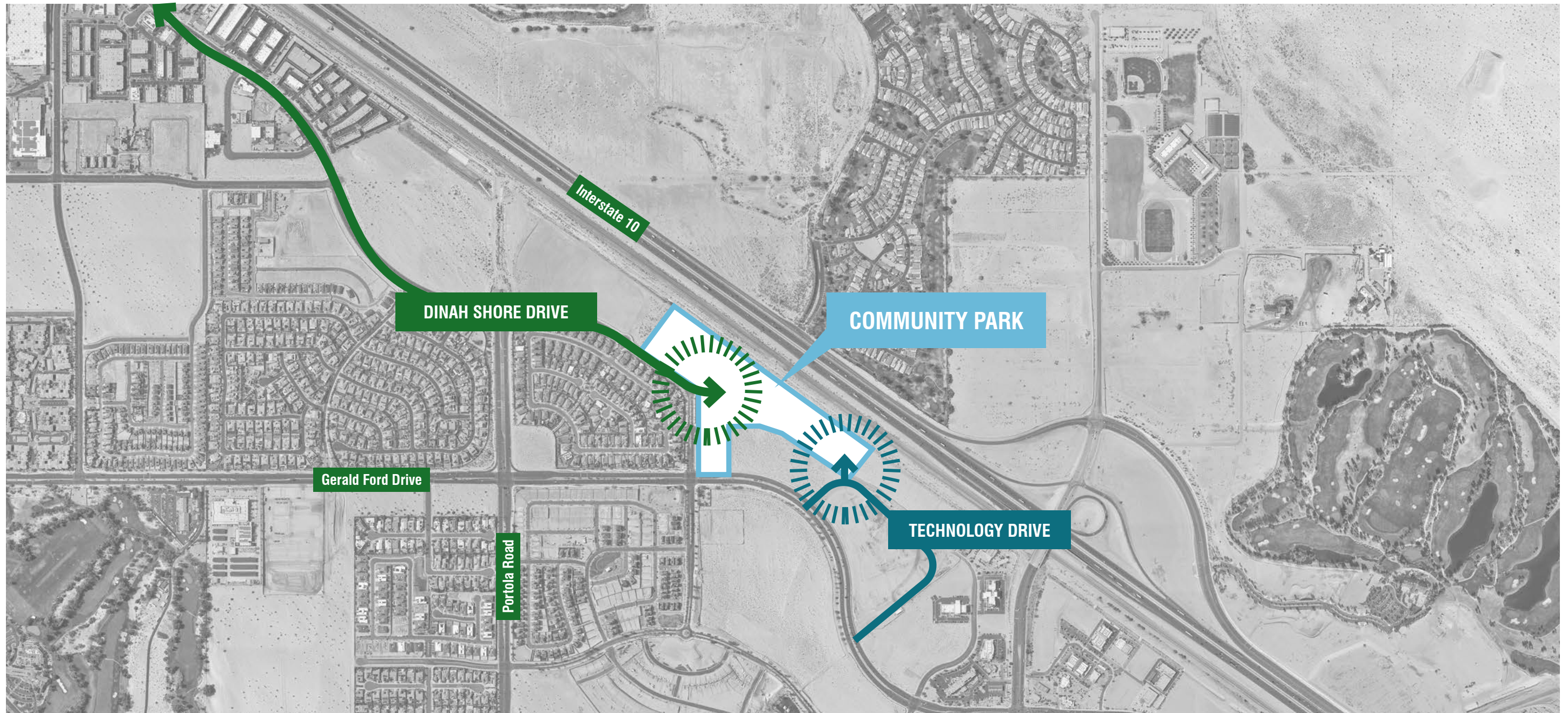
01



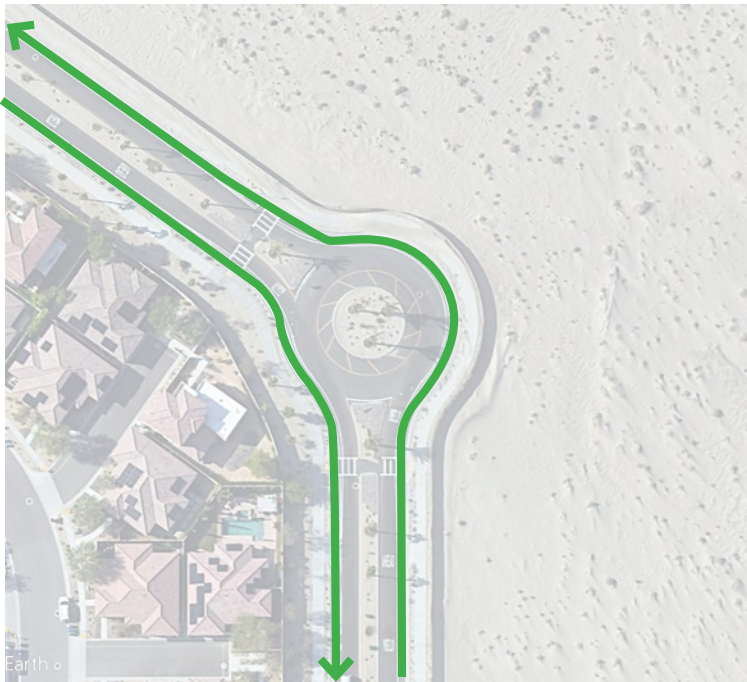
Park Location

Key Take-Aways for Advancing to Schematic Design

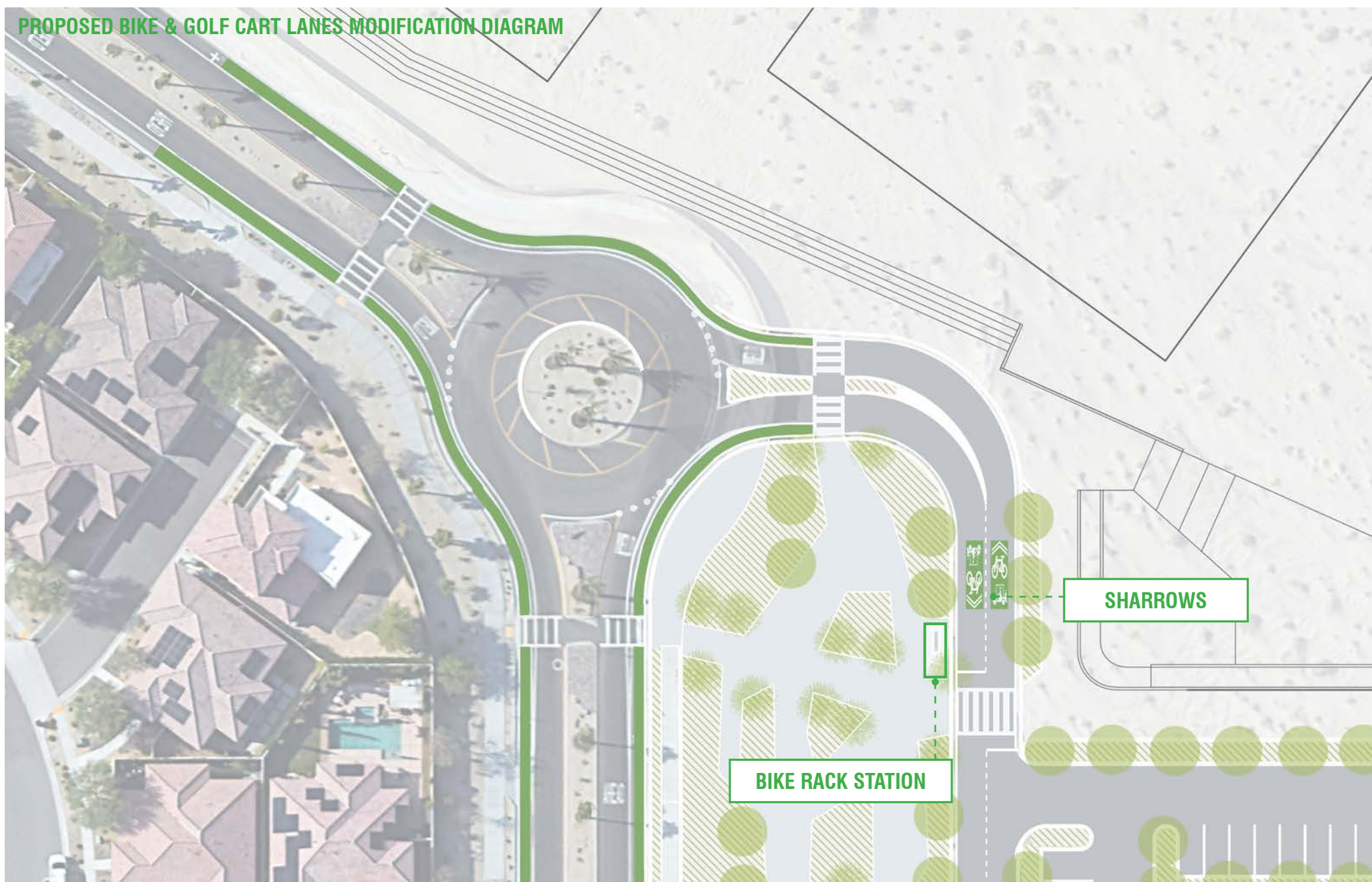
- Providing primary access from Dinah Shore Drive; alleviating the access demands on Technology Drive.
- Ensuring we maintain two readily-accessible points of access and egress for improved safety and emergency response.
- Locating parking closer to all park amenities.
- All previously-approved park elements and components are included.
- Additional features include a second restroom, a community garden, bocce courts, and disc golf stations.



Dinah Shore Drive Access



EXISTING BIKE & GOLF CART LANES ROUNDABOUT



Dinah Shore Drive Access





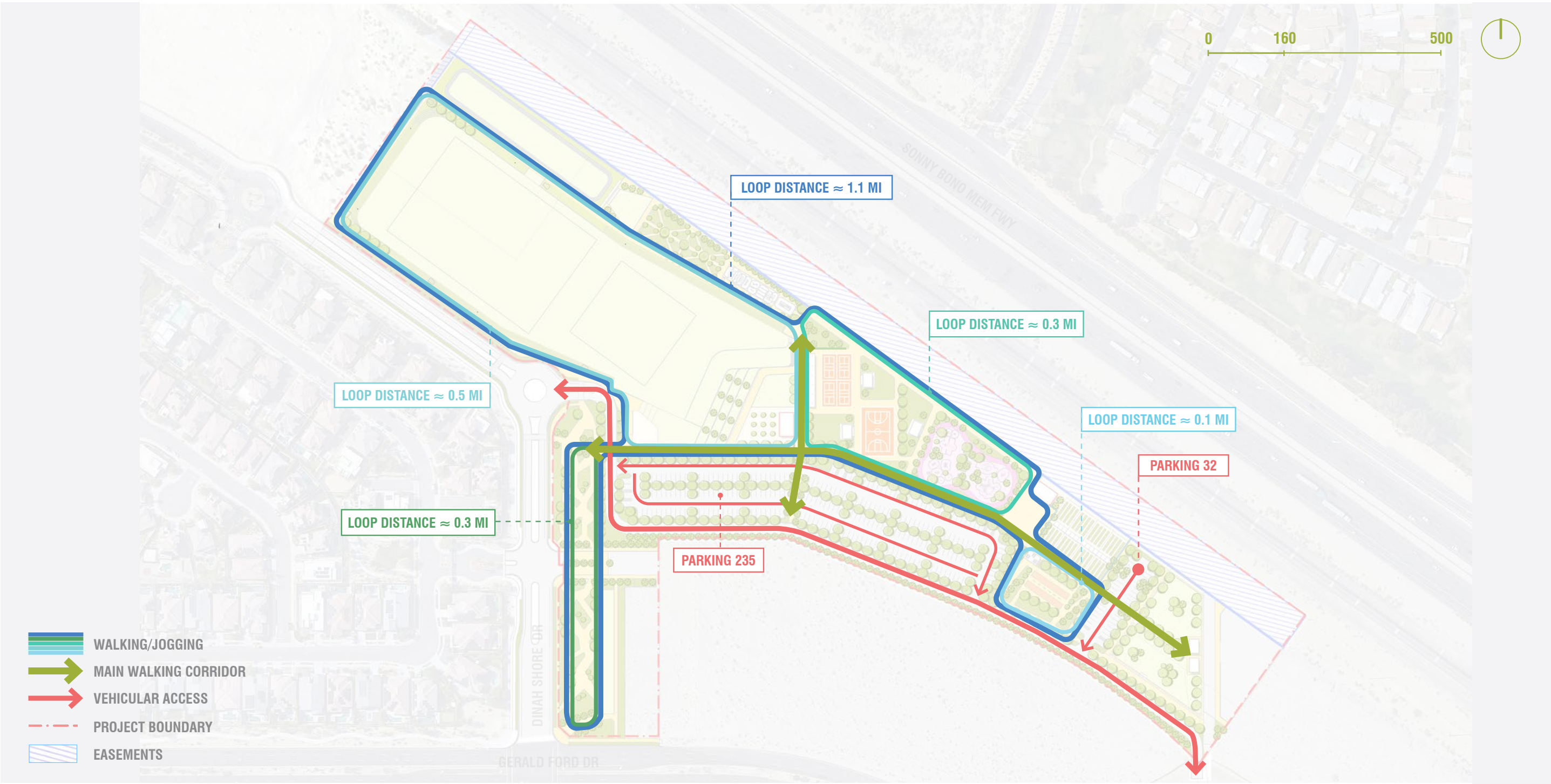




0 160 500



WHAT ARE THE PROPOSED CHANGES



Parks and Recreation Committee recommendations:

- Swap the playground and sports core areas to provide better opportunities for families to observe children in both the basin and playground.
- Relocate the splash pad to the center of the park, making it a focal point.



0 160 500



WHAT ARE THE PROPOSED CHANGES



WHAT ARE THE PROPOSED CHANGES























New Addition

WHAT ARE THE PROPOSED CHANGES



New Addition



New Addition

WHAT ARE THE PROPOSED CHANGES



WHAT ARE THE PROPOSED CHANGES

Community Feedback

02



Wildflower Festival Booth

Help us refine the design concepts we've developed!
 The new North Palm Desert community park is taking shape, and we want your feedback on this exceptional development. The City is committed to making this park a dynamic, safe, and enjoyable location for residents and visitors alike.

As the community park's design progressed from schematic to design development stages, adjustments were necessary for the initial proposals for access locations and vehicular circulation. The revised design maintains the proposed access via the newly constructed Technology Drive, while the access from Dinah Shore Drive has been shifted to directly connect from the existing traffic circle. These modifications serve two primary objectives:

- **Safety and Security:** This alteration ensures emergency vehicle access from at least two locations, mitigating any potential delays in response times.
- **Reduced Impact:** By providing a more direct route from Dinah Shore Drive, the majority of park users gain improved access. The repositioned entrance negates the need for a southbound left turn, which would otherwise require altering existing landscaped medians to accommodate a dedicated turn lane, thereby minimizing traffic queuing impacts.

The updated design also redistributes the provided parking, allowing park users to find parking options closer to their destinations within the park.

TAKE OUR PARK SURVEY!



PARK CONCEPT - DESIGN OPTION 01



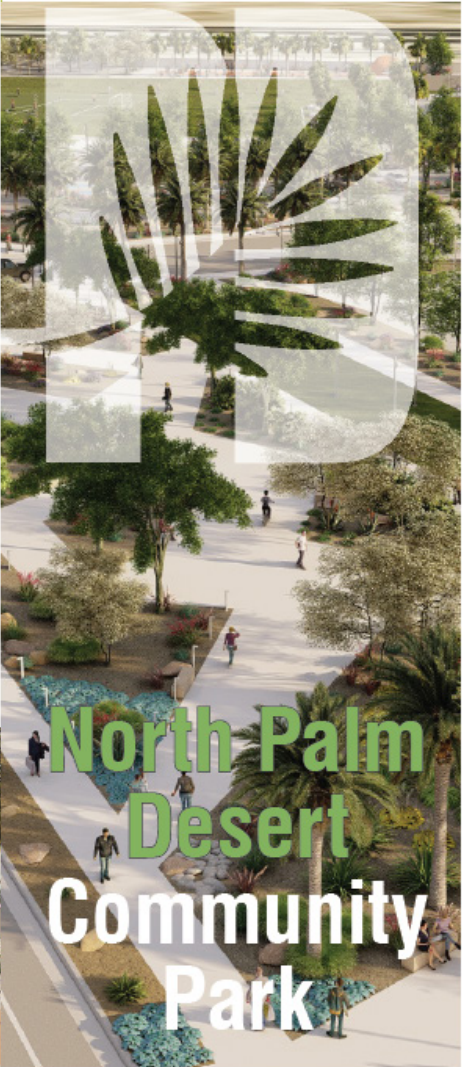
PARK CONCEPT - DESIGN OPTION 02



TAKE OUR PARK SURVEY!



Your feedback will help us refine the design concepts we've developed, ensuring we include the most important elements to make the park a thriving and enjoyable space for everyone.



North Palm Desert Community Park

Online Survey



Open House

CITY COUNCIL - UPDATE PRESENTATION
COMMUNITY PARK APRIL 24, 2025

Key Take-Aways from Community Engagement

- Overall, residents expressed excitement about the park design.
- The final plan reflected the community's preference.
- Strong community support for disk golf.
- Strong support for addition of a community garden.
- Support for lighting, provided there is no organized sports lighting.
- Support for all proposed activation uses. Some residents would rather not include a basketball court.
- More shade structures rather than waiting for trees to grow in.
- No overnight parking.

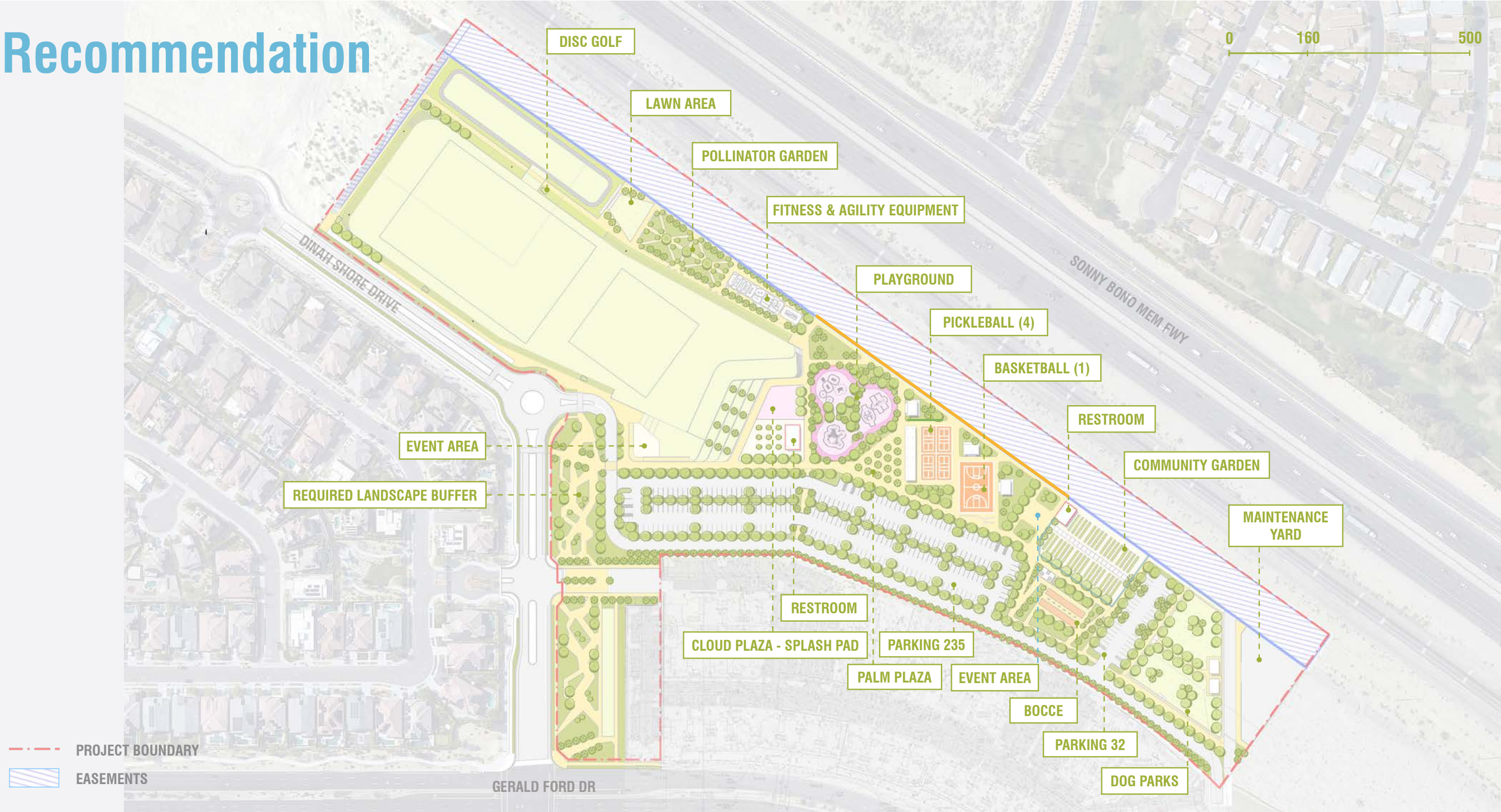
Next Steps

03

Recommendation



0 160 500



--- PROJECT BOUNDARY

/// EASEMENTS

April 2025	Presentation to City Council, Commence preparation of construction plans
May 2025	Commence any necessary CEQA studies/items needed
May – June 2025	Preparation of 30% Plans
July – Sept 2025	Preparation of 60% Plans
Oct – Nov 2025	Preparation of 90% Plans
December 2025	Permitting
Jan – Feb 2026	Bidding and Contractor Selection/Negotiation
March 2026	Start of Construction

Targeted Schedule

Thank you