

NEW LIBRARY FACILITY

Conceptual Design

City Council

February 27, 2025



PALM DESERT



MITTAL

LIBRARY PLANNING

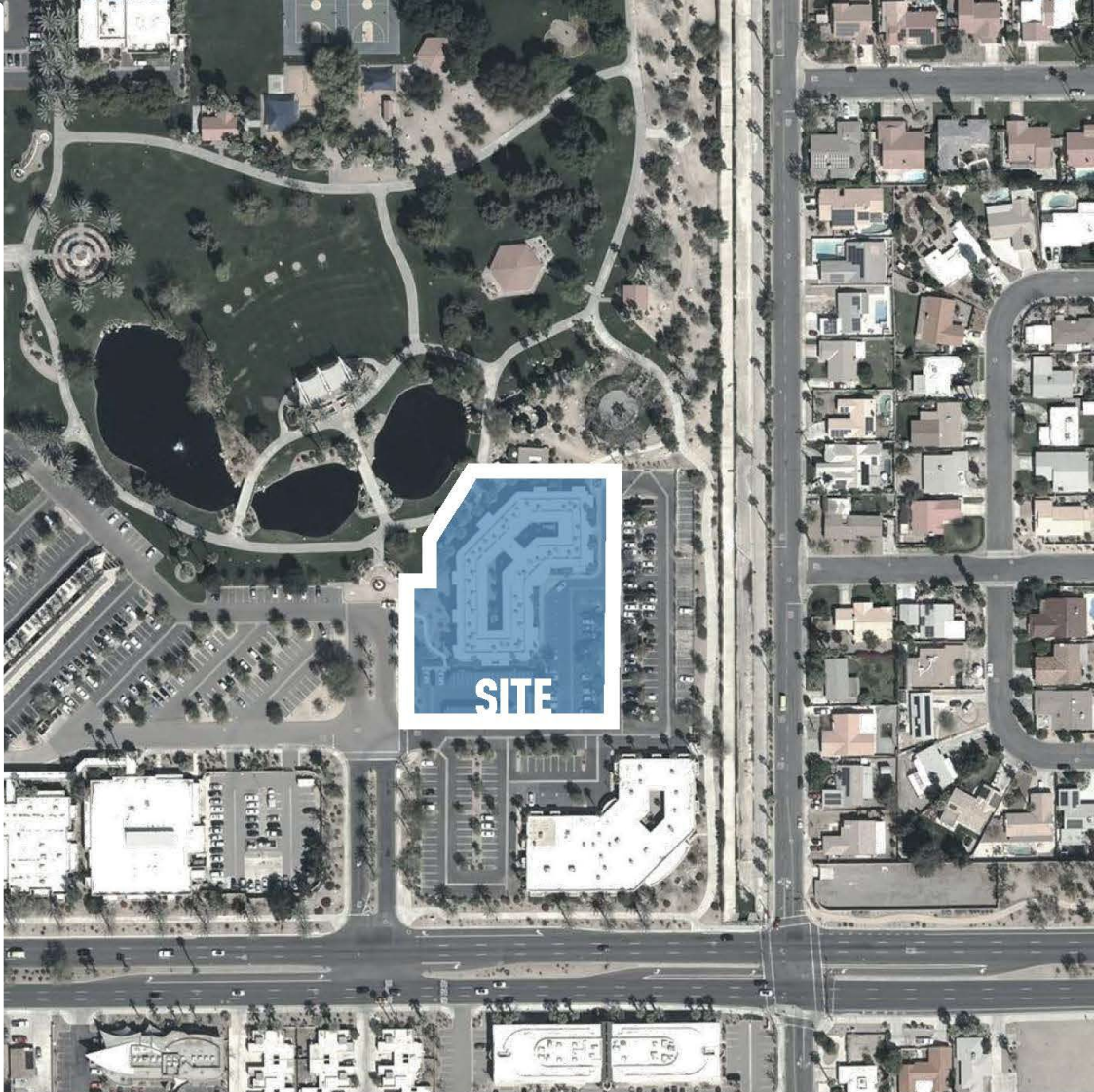
City Council Study Session: February 13, 2025

- Formation of Library Taskforce and Library Advisory Committee
- Contracting of Library consultants
 - Margaret Sullivan Studios: Community Outreach and Library Programming
 - Richärd Kennedy Architects: Design Services
- Parkview Building project site
- Withdrawal agreement with County of Riverside
- New 5-year lease with COD
- Library Advisory Committee recommendations

EXECUTIVE SUMMARY

In conjunction with the City of Palm Desert, the design team led by Richard Kennedy Architects engaged in a series of visioning and focus group meetings to develop the conceptual design for the new Palm Desert Municipal Library. This presentation illustrates a proposed overall concept for how the new Library can be realized in the Civic Center Park.

The vision for the Palm Desert Municipal Library is to create a dynamic and inclusive space that provides equal access to resources and technologies for all residents. This project aims to foster community participation and collaboration, advance educational outcomes, and maximize the return on the community's shared investment by creating safe, welcoming, and innovative spaces.



ZONING FLOOR PLAN

Total Floor Area = 25,892 gsf

\$30M Budget

- Cost estimates reconciled with Architect's estimator and Construction Manager

Shared Spaces:

- Veterans Services
- Friends of the Library
- CVAG Meetings
- Special Programs "Green Room"
- Maker Space

Additional Community Spaces:

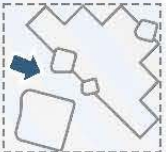
- Visitor Center
- Café
- Demonstration Kitchen



NATIVE PALM GROVE CONCEPT

The building concept is defined by (3) main architectural elements inspired by regional palm groves – the 'palm tree canopy' shade screen providing shade for all outdoor program areas, the lower volume 'boulder' forms highlighting key program areas, and the 'riverbed' surface materials and planting approach that defines major pathways through the site and building.





BREEZEWAY

Main entry (center), multipurpose space (right)



SHADE

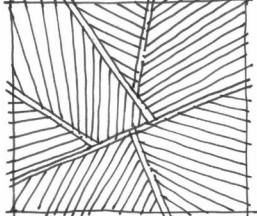
PATTERN:



Inspiration



Literal



Abstraction



INTERIOR

Approach at service desk into library stacks with views to the park



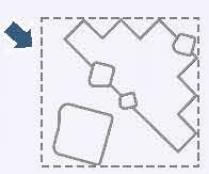
PROJECT BUDGET

| Library | Description | 451 | 452 | 110 | TOTAL* |
|--|--------------------------|--------------|-------------|-------------|---------------------|
| 451 – Capital Improvement Bond Proceeds | | \$20,000,000 | | | \$20,000,000 |
| 452 – Library Capital Project Fund | Contribution from County | | \$4,000,000 | | \$4,000,000 |
| 110 - Future Measure G Revenue | | | | \$6,000,000 | \$6,000,000 |
| Total Project Funds Available | | | | | \$30,000,000 |
| Less: Contracts/Expenditures | | | | | |
| Conceptual Design (Richard Kennedy Architects) | | | (\$642,865) | | |
| Traffic Study (HR Green) | | | (\$67,570) | | |
| Cost Estimating (Anser Advisory) | | | (\$20,620) | | |
| Survey (TKE Engineering) | | | (\$48,100) | | |
| Total Contracts/Expenditures | | | | | (\$779,155) |
| Balance Available* | | | | | \$29,220,845 |
| | | | | | |

**The \$20M in Bonds and \$6M in Measure G Funds will be appropriated with the 2025-26 Annual Budget Request*

NEXT STEPS

- Conceptual Design Approval – Feb. 27, 2025
- Schematic Design Phase (Q1 2025 – Q2 2025)
 - Entitlements
 - Planning Commission
 - Architectural Review Commission
- Design-Build
 - Design Development & Construction Documents Phase (Q2 2025 – Q4 2025)
 - Demolition of Parkview Building (Q1 2026)
 - New Construction (estimated completion – Q4 2027)



PARK VIEW

Dusk view from park toward northwest corner

Questions?