



**City of Palm Desert:  
Stormwater Protection Program**

**April 25, 2024**

The background of the slide is a photograph of the Palm Desert Civic Center. The building is a large, curved, tan-colored structure with the words "PALM DESERT CIVIC CENTER" and the phone number "73-510" inscribed on its facade. In the foreground, there is a bronze sculpture of a figure in a dynamic, dancing pose. The scene is set in a desert environment with several tall palm trees and some desert landscaping, including rocks and small plants, under a blue sky with scattered clouds.

## Agenda

- Stormwater Protection Program - *What is it?*
- Accomplishments - *What has the City recently completed?*
- Stormwater Infrastructure Assessment - *What is next?*



# Stormwater Protection Program

*What is it?*

# Stormwater Protection Program

## ▶ What is it?

- ▶ Management plan to reduce pollution from stormwater runoff

## ▶ Why is it important?

- ▶ Protects community from flooding & prevents pollution from entering the system

## ▶ Who is responsible for it?

- ▶ Local agencies for operation & State Water Board for enforcement

## ▶ What are the key elements included in the program?

- ▶ Annual Catch Basin Cleaning
- ▶ Inspection & Inventory Management
- ▶ HOA Self Certification
- ▶ CASC Service Contract
- ▶ MS4 permit requirements
- ▶ Stormwater Infrastructure Assessment



# Accomplishments

*What has the City  
recently completed?*

## Public Relations & Outreach Efforts

- New stormwater webpage with added additional resources
- ∅ Updates in the Brightside Newsletter
- Presented new "Private Stormwater Self Certification Program" at HOA Community meeting, including messaging:
- Re-branding efforts (new logo) to bring awareness to stormwater protection



**RIVERSIDE COUNTY**  
WATERSHED PROTECTION

Help keep the City of Palm Desert  
beautiful and clean.

For questions or concerns please call  
Public Works at (760) 776-6450 or email us  
at [publicworks@palmdesert.gov](mailto:publicworks@palmdesert.gov)

# Managing, Inspecting & Maintaining Stormwater Infrastructure

- Catch basin data was collected & uploaded to asset management software (Cartegraph)
- Continue to collect & inspect stormwater infrastructure in Cartegraph
  - Electronically cataloging this information is a new requirement of the MS4 permit
- Inspection processes expanded & configured in Cartegraph for field staff to ensure maintenance & conditions are documented & reportable
- Additional training for field staff & project managers has been scheduled & will be ongoing



# Annual Catch Basin Cleaning Program

Contract for cleaning of 874 basins:

- Debris removal
- Inspections
- Retrofits
- Stencil replacement



# Annual Catch Basin Cleaning Program

## Before & After Cleaning:

- Collector Pipe Screen (CPS Units) in use
- 76 cubic yards of debris removed in FY 23



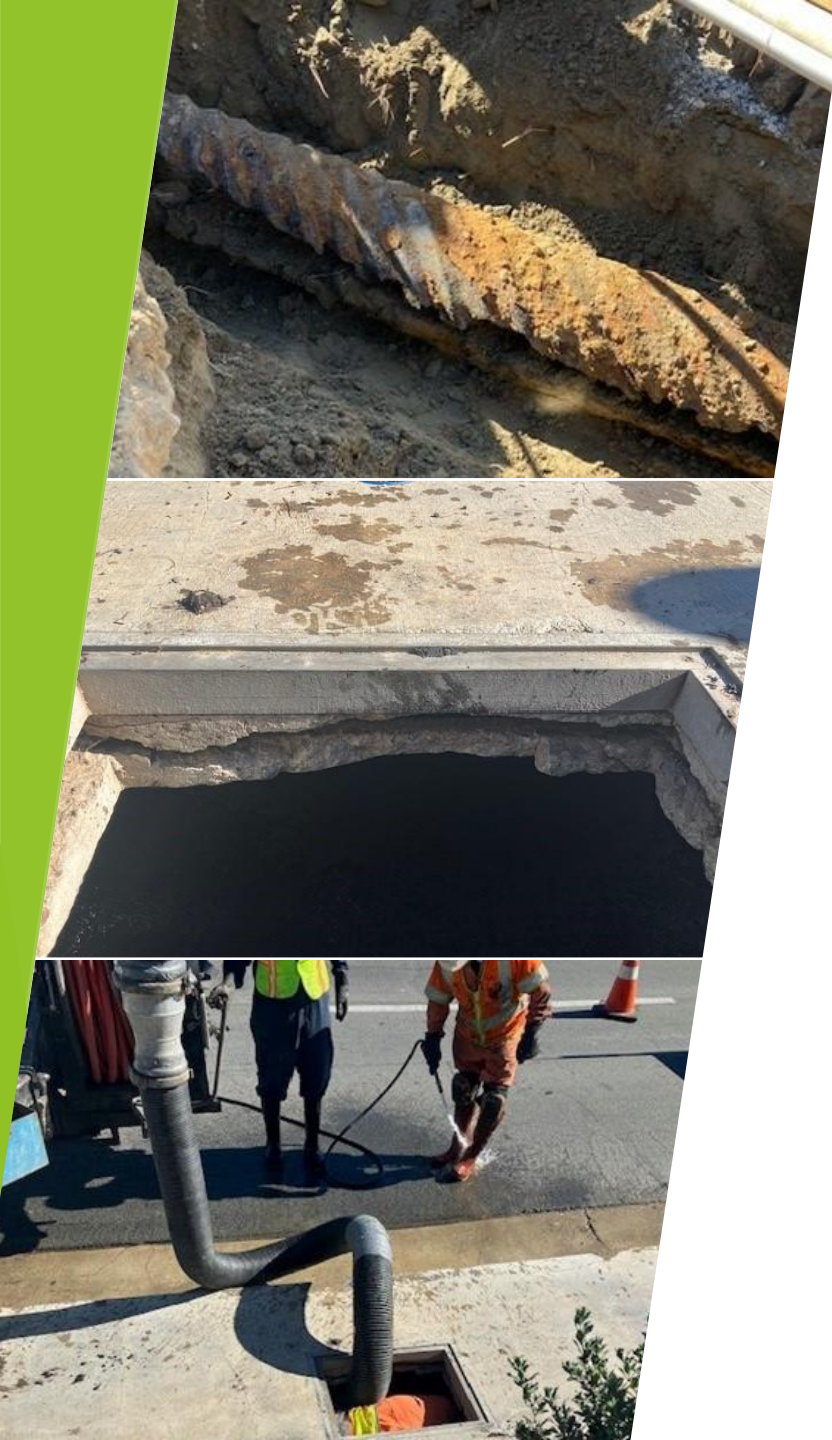


# Stormwater Infrastructure Assessment

## What is next?

# Stormwater Infrastructure Assessment

- ▶ Phase 1 - Preliminary Assessment
- ▶ Phase 2 - Maintenance Contractor Oversight
- ▶ Phase 3 - Final Assessment & Report



		RATING SCALE AND ASSOCIATED ACTION				
		1	2	3	4	5
		GOOD	FAIR	POOR	CRITICAL	FAILED
CONDITION		Like new, with little or no deterioration, structurally sound and functionally adequate.	Some deterioration, but structurally sound and functionally adequate.	Significant deterioration and/or functional inadequacy, requiring maintenance or repair.	Very poor conditions that indicate possible imminent failure which could threaten public safety.	Failed or non-functional condition.
ACTION INDICATED		No action is recommended. Note in inspection report only.	No immediate action is recommended, but more frequent inspection may be warranted. Maintenance personnel should be informed.	Team Leader (Inspector) evaluates need for corrective action and makes recommendation in inspection report.	Corrective action is required and urgent. Engineering evaluation is required to specify appropriate repair.	Emergency action is required to address public safety hazard. Roadway closure is typical.

## What will this effort achieve?

- 1 - Comprehensively map & inventory City's stormwater infrastructure
- 2 - Assess the current condition of stormwater infrastructure components
- 3 - Electronically catalog stormwater infrastructure data (Cartegraph)
- 4 - Cleaning of Stormwater Infrastructure
- 5 - MS4 Permit Compliance
- 6 - Self-Certification Program
- 7- Increased Comprehensive Inspection of Stormwater Infrastructure

	1	2	3	4	5	6	7
Currently				✓	✓		
After	✓	✓	✓	✓	✓	✓	✓



Questions?

