

The background features a photograph of a large, curved, light-colored building, possibly a library or community center, with palm trees and greenery in the foreground. A large blue semi-transparent overlay covers the middle section of the image, containing the main text. The overall design includes yellow and blue geometric shapes at the top and bottom.

Palm Desert Redistricting 2023

Public Hearing #4

December 14, 2023

Background

Direction to Transition to Five Districts

On June 22, 2023, the City Council unanimously directed staff to take the necessary steps to transition to five single-member districts prior to the November 2024 Election.

Public Education & Outreach Plan

On August 24, 2023, the City Council unanimously adopted the Redistricting Public Education and Outreach Plan

Workshops and Public Hearings

Meeting Videos, Staff Reports, Presentations, & Public Comments are posted to the redistricting website.

For the full schedule, visit:
<https://redistrictpd.org/>

1

September 6, at 6 p.m., Community Workshop #1
(Held at City Hall & via Zoom)

2

September 14 & 28, at 4:30 p.m., Public Hearings #1 and #2
(Held in Council Chambers & via Zoom)

3

October 4 & 16, at 5 p.m., Map Drawing Workshops #1 and #2
(Held via Zoom)

4

November 16, at 4:30 p.m., Public Hearing #3
(Held in Council Chambers & via Zoom)

5

November 29, December 6, at 6 p.m., Community Workshops #2 & #3
(Held at iHub and City Hall)

Purpose of this Public Hearing

- To hear from the community and City Council on any desired modifications to Focus Map 109 and the sequence of elections.
- The City Council may discuss, consider, and act on one or more district map(s), including modifications of district boundaries, sequencing of elections, and such matters as may be related to the formation of City Council districts.

District Map Drawing Criteria

1. Federal Laws

Equal Population

Federal Voting Rights Act

No Racial Gerrymandering

2. California Criteria (in priority order):

1. Geographically contiguous

2. Minimize division of neighborhoods and "communities of interest" (Socio-economic geographic areas that should be kept together)

3. Easily identifiable boundaries

4. Compact (Do not bypass one group of people to get to a more distant group of people)

Prohibited: "Shall not favor or discriminate against an incumbent, political candidate, or political party."*

3. Other Traditional Redistricting Principles

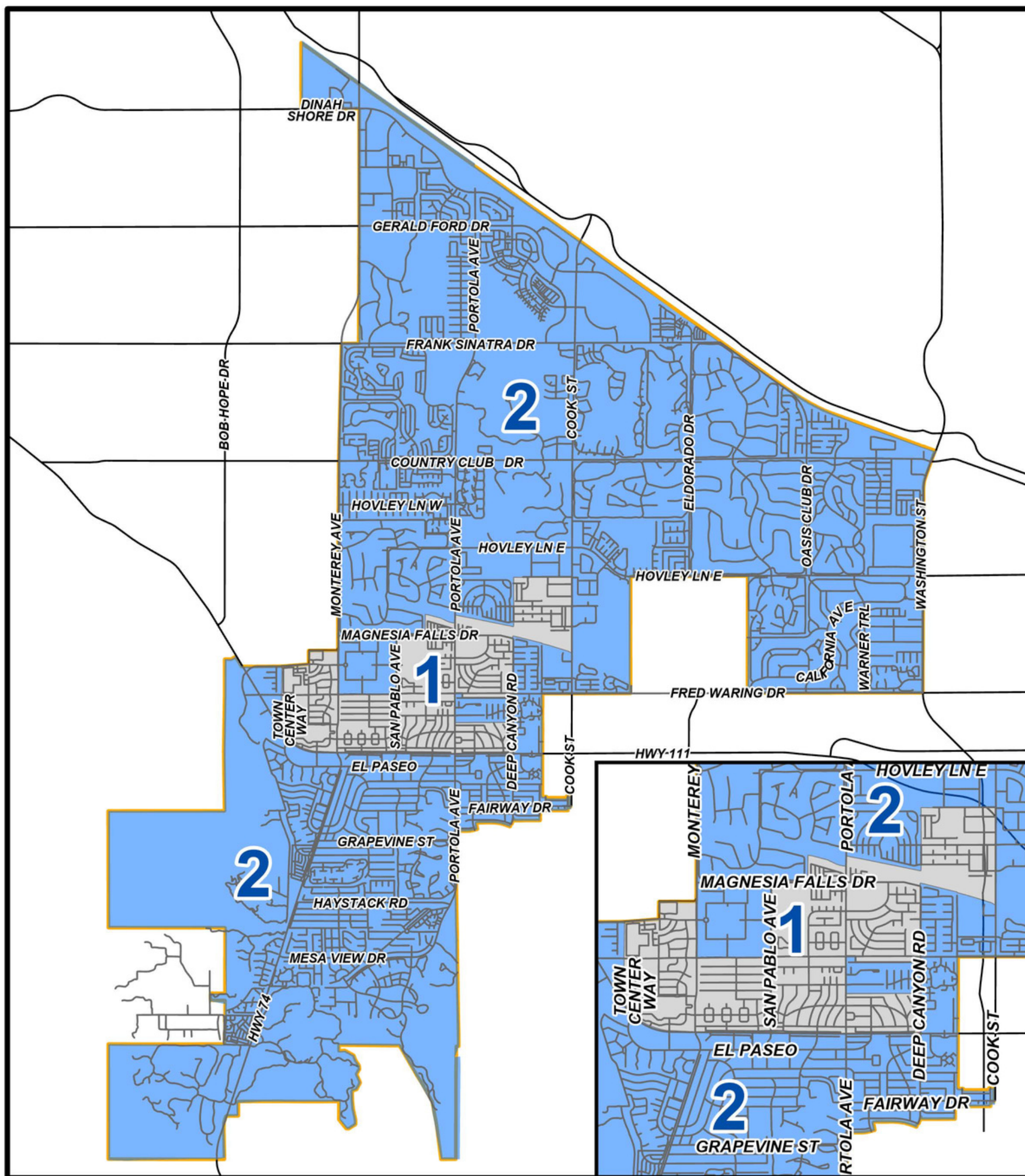
~~* Respect voters' choice / avoid unnecessary pairing of incumbents~~

Future Population Growth

* Change made pursuant to AB 764, effective January 1, 2024

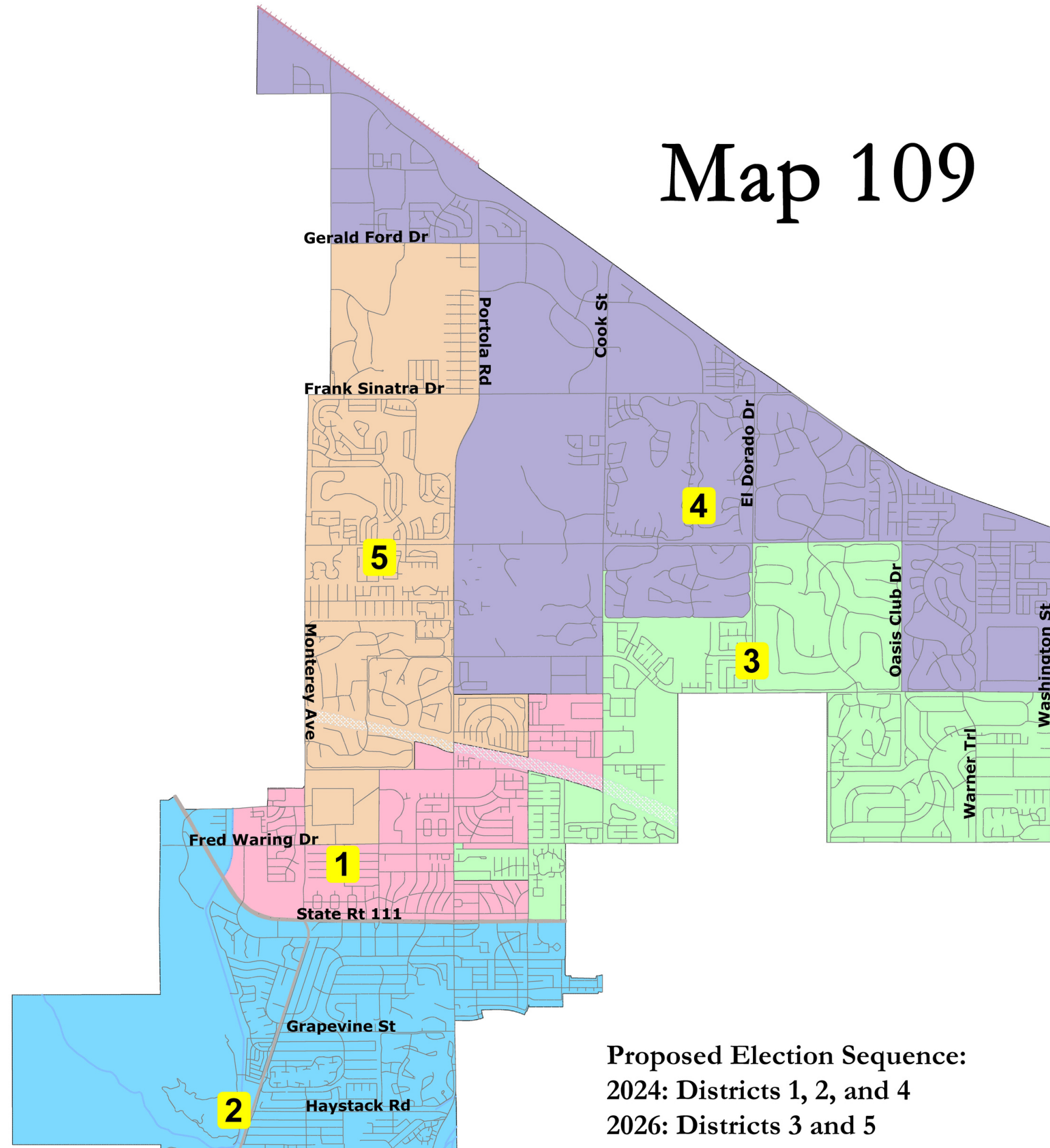
Source: NDC

Existing Two-District Map

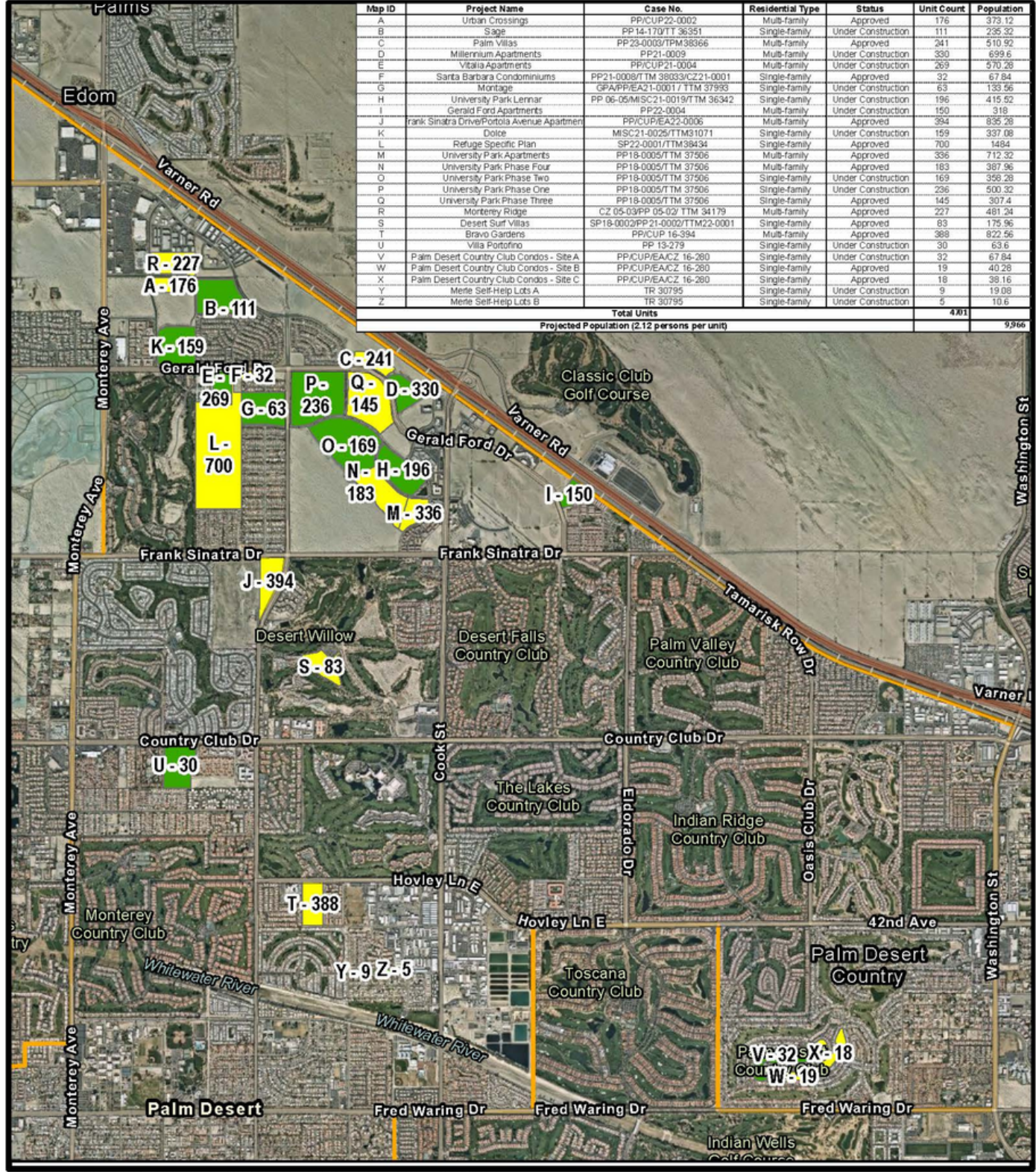


Focus Map 109

Map 109



Future Population Growth



Map ID	Project Name	Case No.	Residential Type	Status	Unit Count	Population
A	Urban Crossing	PPICUP22-0002	Multi-family	Approved	176	373.12
B	Sage	PP14-170/TM 36351	Single-family	Under Construction	111	235.32
C	Palm Villas	PP23-0003/TM38366	Multi-family	Approved	241	510.92
D	Millennium Apartments	PP21-0009	Multi-family	Under Construction	330	699.6
E	Vitara Apartments	PPICUP21-0004	Multi-family	Under Construction	269	570.28
F	Santa Barbara Condominiums	PP21-0008/TM 38333/C21-0001	Single-family	Approved	32	67.84
G	Mortgage	GPAPFEA21-0001/TM 37993	Single-family	Under Construction	63	133.56
H	University Park Lennar	PP 06-05/MS21-0019/TM 36342	Single-family	Under Construction	196	415.52
I	Gerald Ford Apartments	PP22-0004	Multi-family	Under Construction	150	318
J	Frank Sinatra Drive/Portofino Avenue Apartment	PPICUP/EAC22-0006	Multi-family	Approved	394	835.28
K	Dolce	MISC21-0025/TM31071	Single-family	Under Construction	159	337.08
L	Refuge Specific Plan	SP22-0001/TM38434	Single-family	Approved	700	1484
M	University Park Apartments	PP18-0005/TM 37506	Multi-family	Approved	356	712.32
N	University Park Phase Four	PP18-0005/TM 37506	Multi-family	Approved	193	387.96
O	University Park Phase Two	PP18-0005/TM 37506	Single-family	Under Construction	169	358.28
P	University Park Phase One	PP18-0005/TM 37506	Single-family	Under Construction	236	500.32
Q	University Park Phase Three	PP18-0005/TM 37506	Single-family	Approved	145	307.4
R	Monterey Ridge	CZ 05-03/PP 05-02/TM 34179	Multi-family	Approved	227	481.24
S	Desert Surf Villas	SP18-0003/PP21-0002/TM22-0001	Single-family	Approved	83	175.96
T	Bravo Gardens	PPICUP 16-394	Multi-family	Approved	388	822.56
U	Villa Portofino	PP 13-279	Single-family	Under Construction	30	63.6
V	Palm Desert Country Club Condos - Site A	PPICUP/EACZ 16-280	Single-family	Under Construction	32	67.84
W	Palm Desert Country Club Condos - Site B	PPICUP/EACZ 16-280	Single-family	Approved	19	40.28
X	Palm Desert Country Club Condos - Site C	PPICUP/EACZ 16-280	Single-family	Approved	19	39.16
Y	Mere Self-Help Lots A	TR 30795	Single-family	Under Construction	9	19.08
Z	Mere Self-Help Lots B	TR 30795	Single-family	Under Construction	5	10.6
Total Units					4811	9,906
Projected Population (2.12 persons per unit)						9,906

	Map 102b/103b		Map 104		Map 105		Map 109	
	Units	Population	Units	Population	Units	Population	Units	Population
District 5	4,200	8,904	4,200	8,904	2,457	5,209	1,488	3,155
District 4	69	146	69	146	69	146	3,130	6,635
District 3	418	886	418	886	2,161	4,581	69	146

- The City Council may consider future population growth when selecting a final map, provided that federal and state criteria have been met.
- By balancing future population growth in the northern area there may be fewer boundary adjustments following the 2030 Census. The desired outcome is to reduce the number of voters being shifted from one district to another and possibly changing their election cycle.

Residential Project Status - June 2023

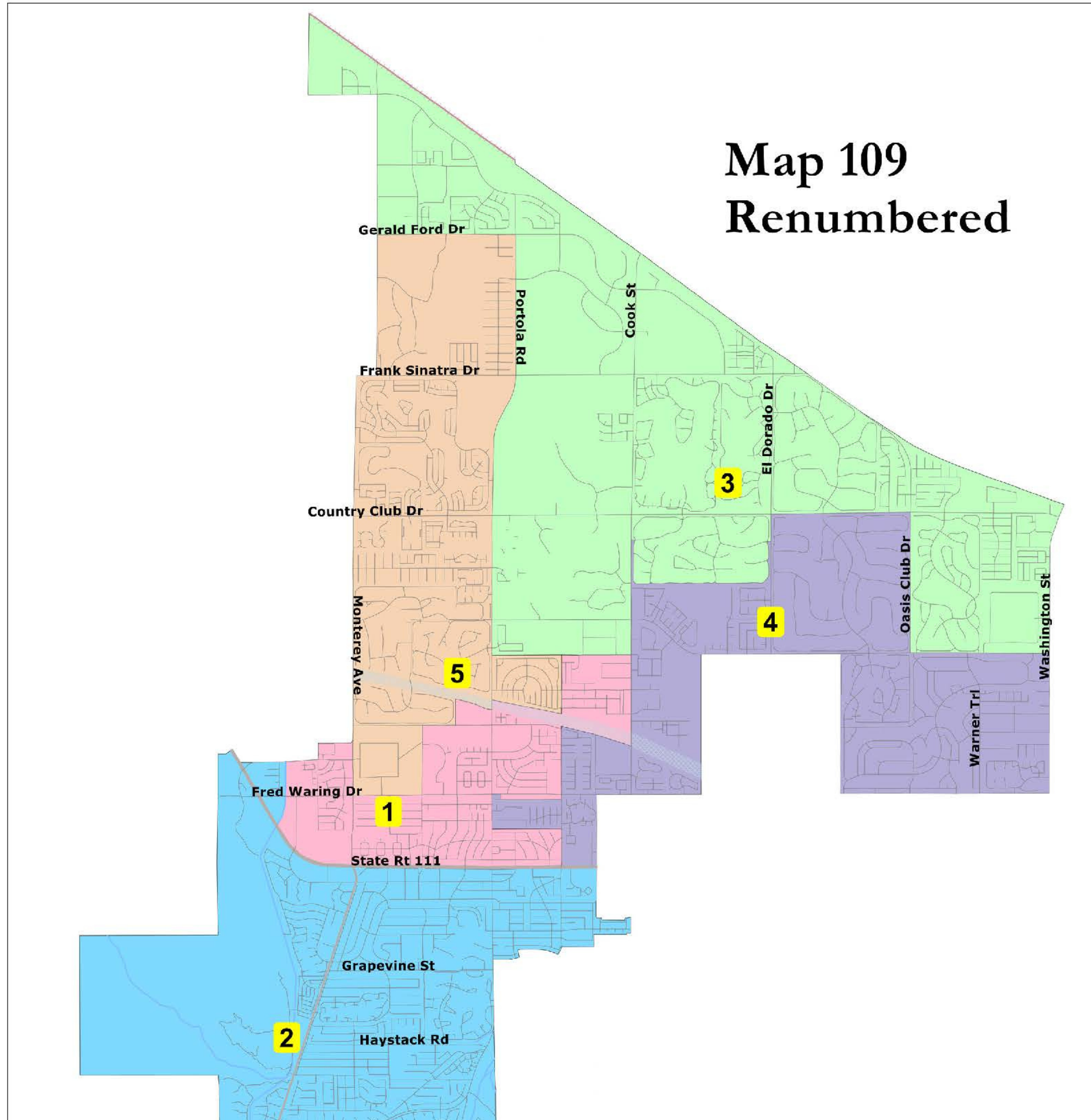
- Approved Units: 2,942 / Projected Pop. 6,237
- Under Construction Units: 1,759 / Projected Pop. 3,729



VICINITY MAP



Focus Map 109 Renumbered - Sequence of Elections



**Map 109
Renumbered**

**Proposed Election Sequence:
2024: Districts 1, 2, and 3
2026: Districts 4 and 5**

Public Participation

- Provide input at an upcoming community workshops or public hearing.
 - Spanish and ASL Interpreters will be available at all workshops.
 - Spanish and ASL Interpreters available upon request for public hearings.
- Submit written comments in-person or via email.
- Subscribe for email updates about upcoming meetings.
- Request a presentation at a civic or community group meeting.

City of Palm Desert
Attn: Anthony Mejia, City Clerk
73-510 Fred Waring Drive
Palm Desert, CA 92260
cityclerk@palmdesert.gov
(760) 346-0611

Feedback at Community Workshops #2 & #3

Public Comments Conveyed:

- Disappointment that the City Council did not select more than one focus map.
- Felt the City Council's decision was based on the demographer's response that she could not find a solution to Map 102 that does not result in a split HOA or gated community.
- The City Council should bring forward "Map 102c" as an additional focus map.
- Map 109 splits the following communities of interest in two districts:
 - Residents north of Country Club with shared issues related to development growth, traffic, wind, and blow sand.
 - Students and taxpayers north of Frank Sinatra are within the Palm Spring USD.
 - Residents north of Country Club are a younger demographic with shared interests.
- The two northern districts extend too far south and this dilutes northern residents' vote.
- Northern and southern areas differ greatly, and historically more City funds are expended in the south.

Feedback at Community Workshops #2 & #3

Public Comments Conveyed:

- Map 109 attempts to address future population growth in an effort to reduce the number of changes to the district boundaries following the 2023 Census.
- Map 109 bridges the northern and mid-city areas; hopefully mitigating damage done by the fractionalizing of the City via redistricting.
- Map 109 does an adequate job of addressing future population growth.

Upcoming Meetings & Important Dates

January 11, 2024, at 4:30 p.m., Public Hearing #5

- Request the City Council adopt a final map
- Introduce an ordinance enacting five single member districts

(Location: Council Chamber and via Zoom)

For the full schedule, visit:

<https://redistrictpd.org/>



DISCUSSION

- Are there any modifications that should be made to Focus Map 109?
- Is the proposed sequence of elections as proposed in “Focus Map 109 – Renumbered” acceptable?

For questions or to schedule a presentation for your community group, please contact:

Anthony Mejia, City Clerk
cityclerk@palmdesert.gov
(760) 346-0611

<https://redistrictpd.org/>