

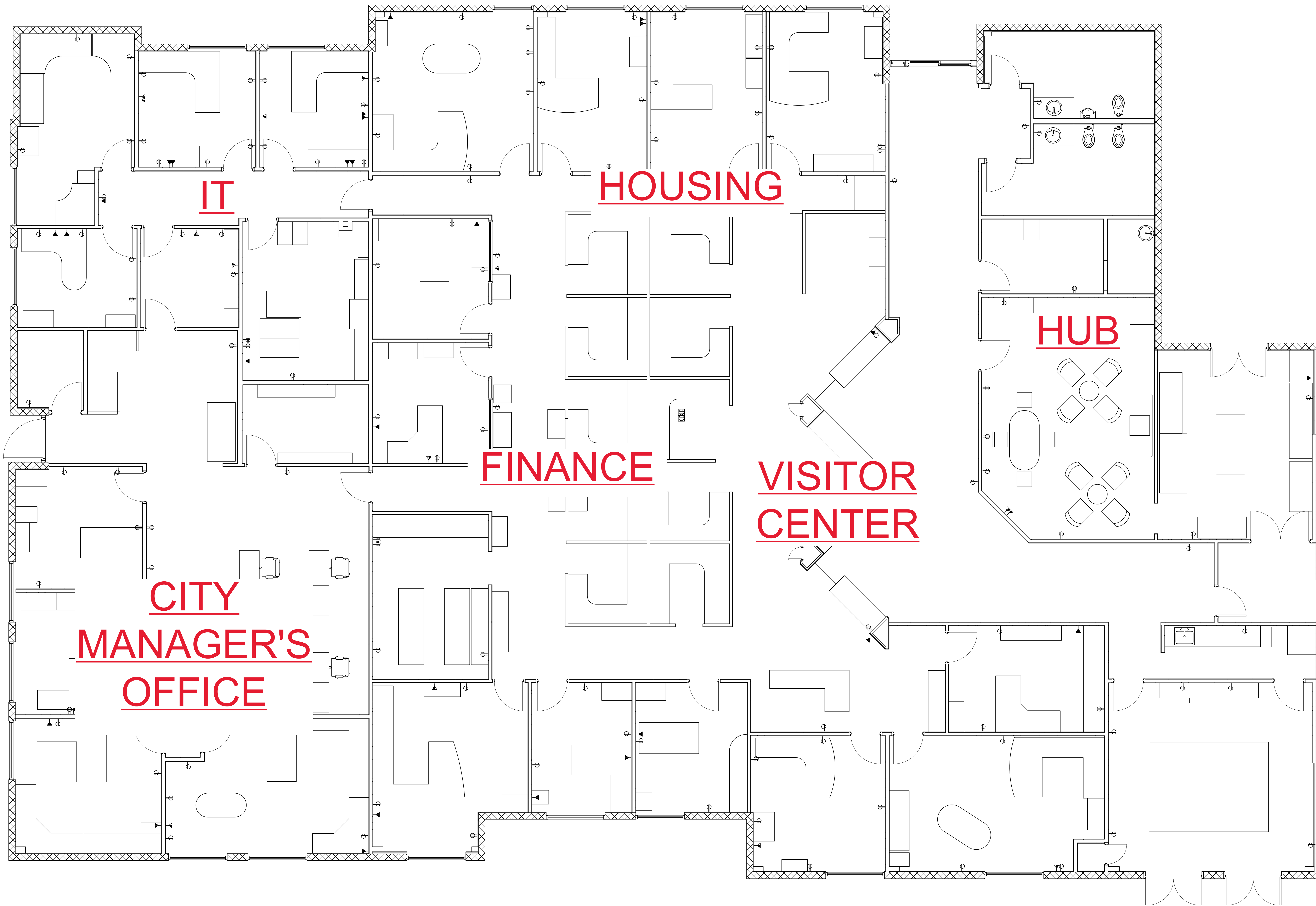
CLIENT INFORMATION:

CITY OF PALM DESERT

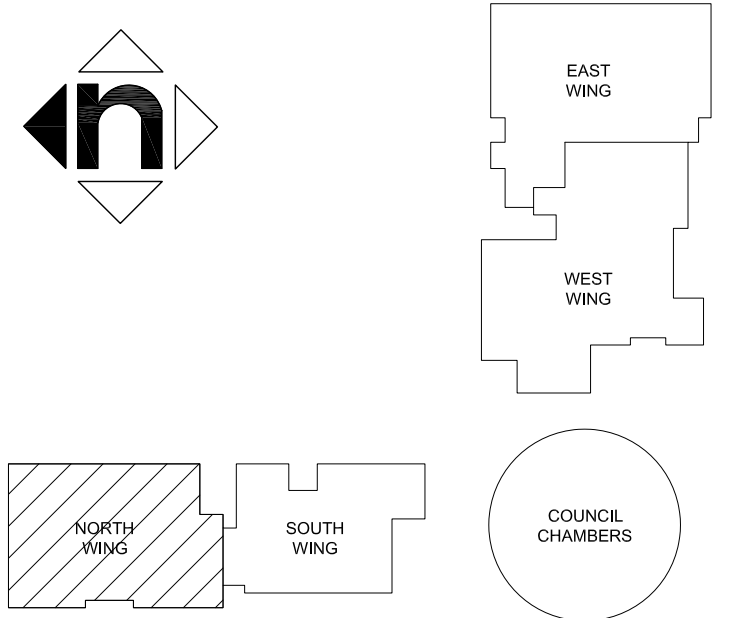
PRODUCED BY:

NOTES:

1. DIMENSIONS ARE TO FINISH FACE OF WALL, U.N.O.



KEY PLAN:



PROJECT INFORMATION:

PALM DESERT CITY HALL

73510 FRED WARING DR,
PALM DESERT, CA 92260

SHEET NAME:

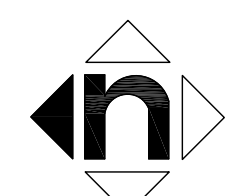
NORTH WING

SHEET NUMBER:

A-3.1

SCALE: 1/4" = 1'-0"
PRINTED: 11.27.2023

A-3.2



CLIENT INFORMATION:

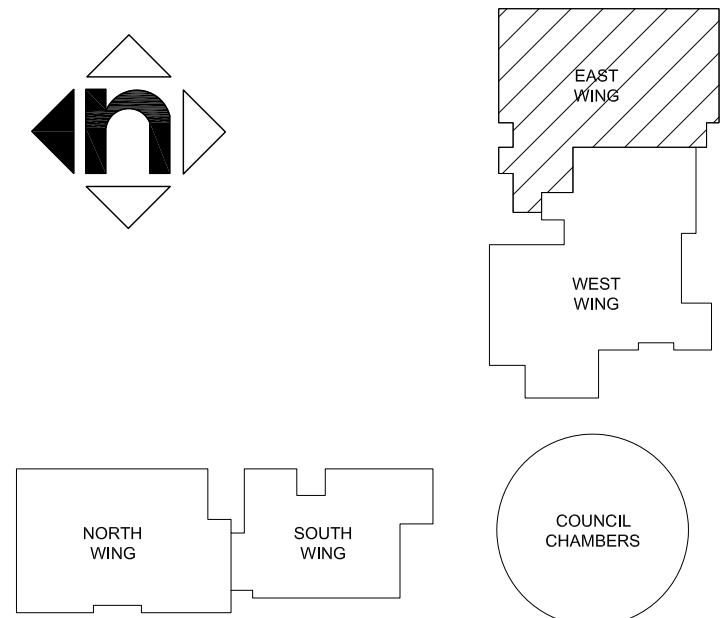
PALM DESERT

D BY:

NOTES:

1. DIMENSIONS ARE TO FINISH FACE OF WALL, U.N.O.

KEY PLAN:



PROJECT INFORMATION:

PALM DESERT CITY HALL

73510 FRED WARING DR,
PALM DESERT, CA 92260

SHEET NAME:

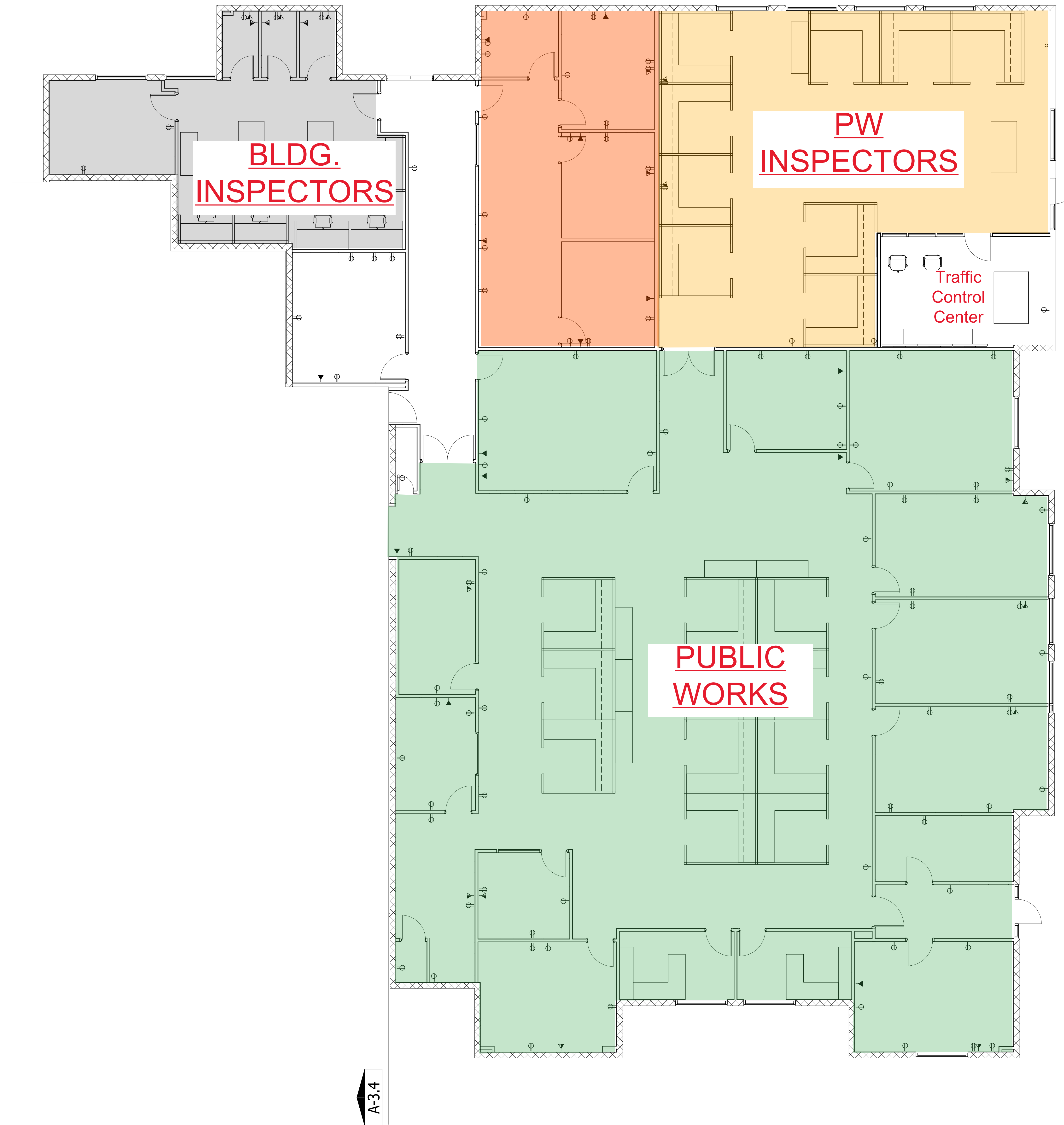
EAST WING

SHEET NUMBER:

A-3.3

SCALE: 3/16" = 1'-0"
PRINTED: 11.27.2023

- Phase 3 - Bldg. Inspectors
- Phase 4 - PW Inspectors
Use as temp. swing space for Phase 2 work
- Phase 5 - Public Works
Use as temp. swing space for Phase 3 work
- Revised space usage TBD
Use as temp. swing space for Phase 5 work



CLIENT INFORMATION:

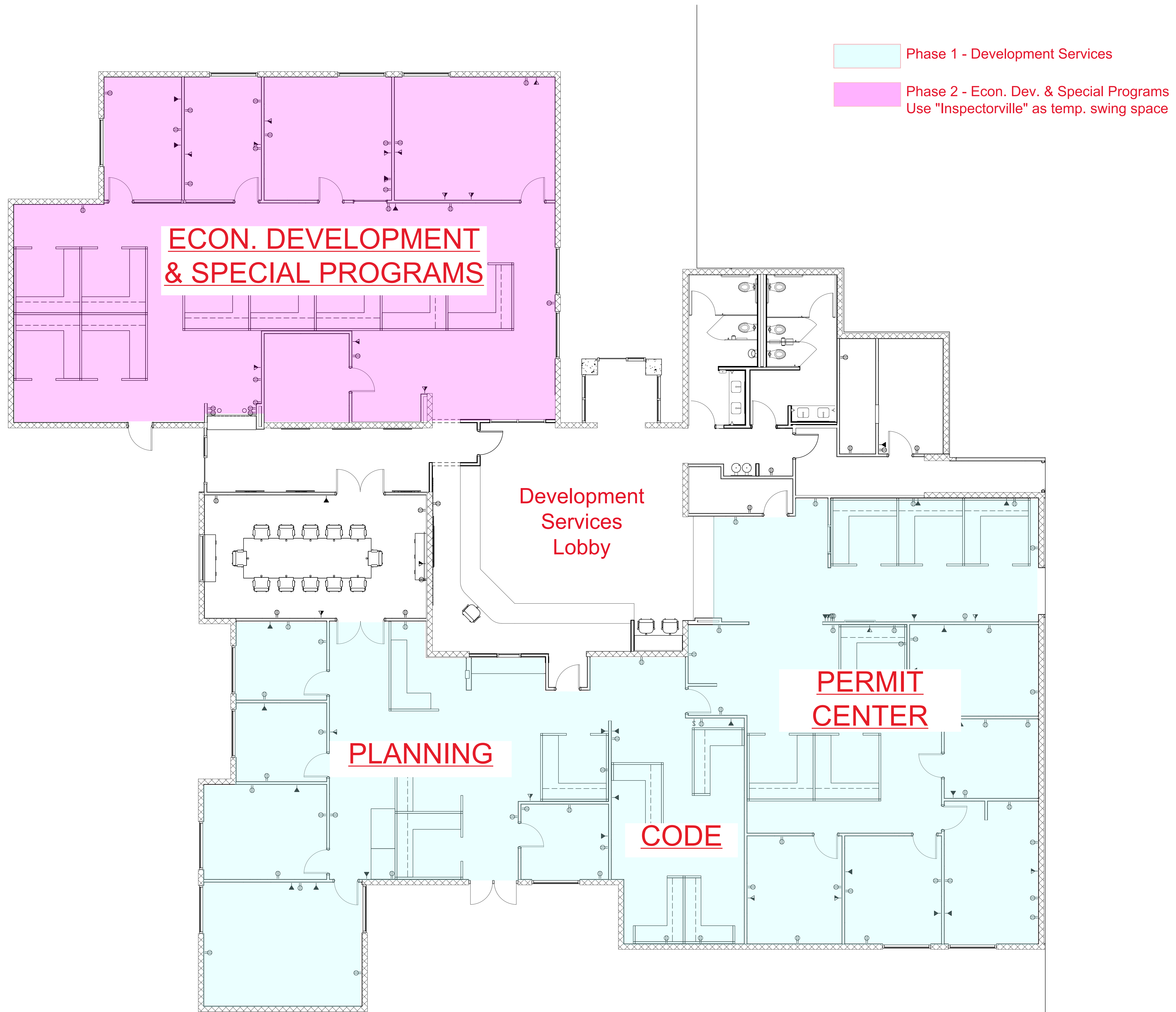
D:\PalmDesert\1252LobbyRemodel_EP-PalmDesert-1-729823.dwg

CITY OF PALM DESERT

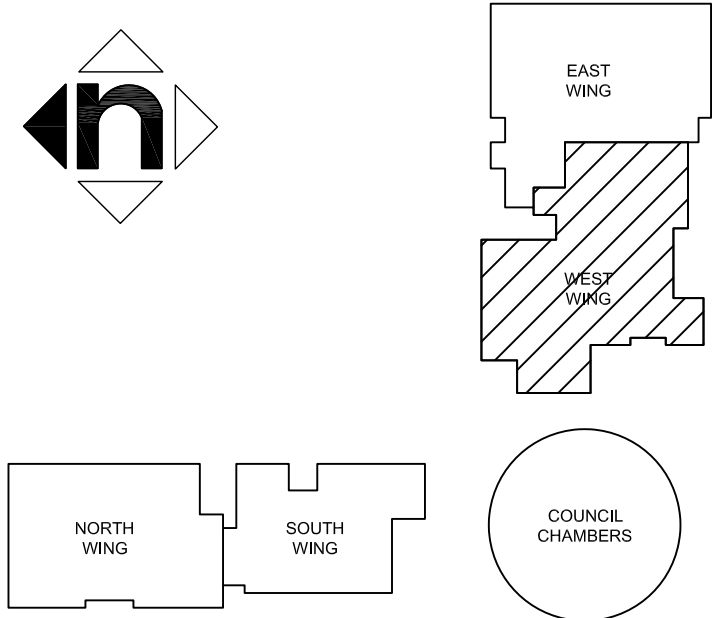
PRODUCED BY:

NOTES:

1. DIMENSIONS ARE TO FINISH FACE OF WALL, U.N.O.



KEY PLAN:



PROJECT INFORMATION:

PALM DESERT CITY HALL

73510 FRED WARING DR,
PALM DESERT, CA 92260

SHEET NAME:

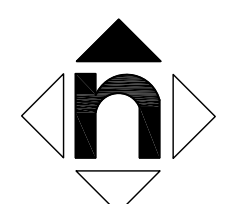
WEST WING

SHEET NUMBER:

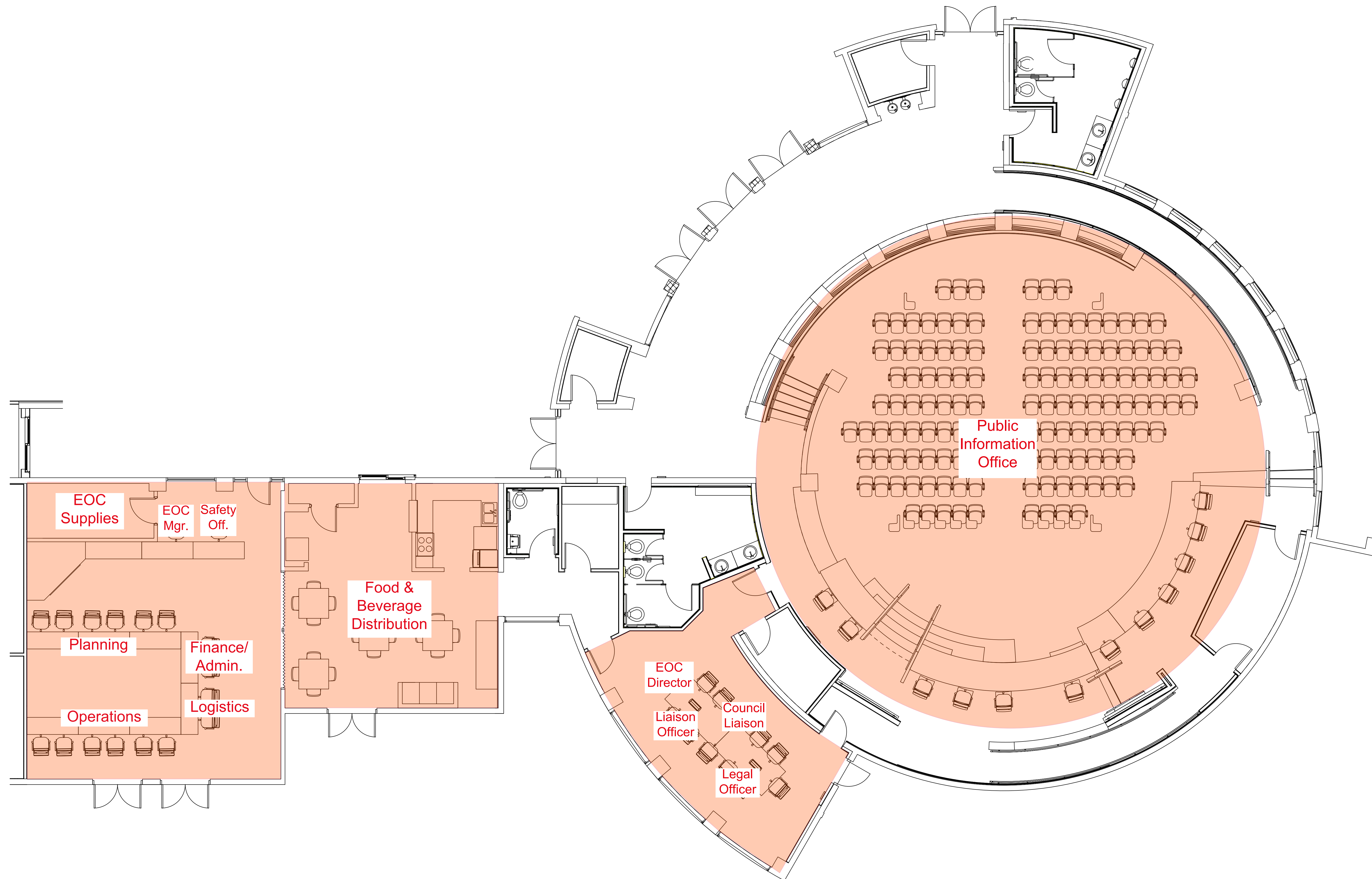
A-3.4

SCALE: 3/16" = 1'-0"
PRINTED: 11.27.2023

A-3.3



Pop-up Emergency Operations Center



CLIENT INFORMATION:

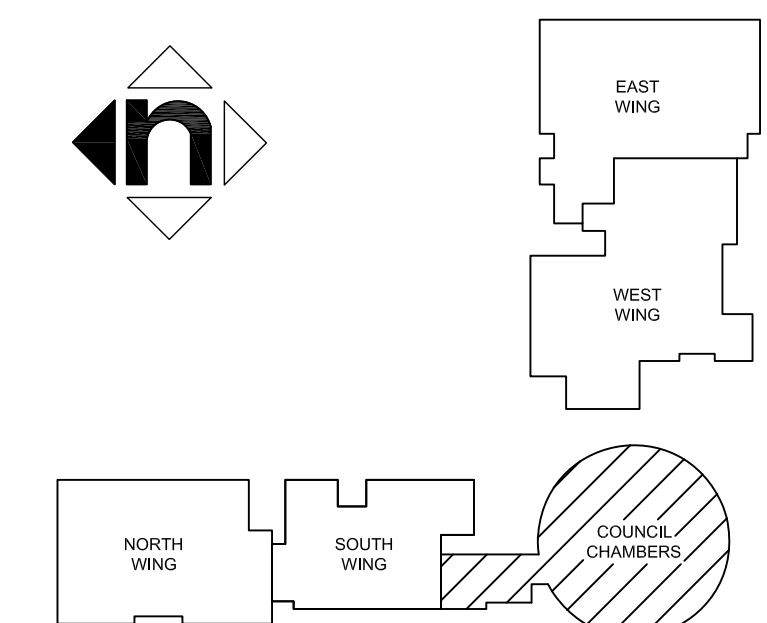
CITY OF PALM DESERT

PRODUCED BY:

NOTES:

1. DIMENSIONS ARE TO FINISH FACE OF WALL, U.N.O.

KEY PLAN:



PROJECT INFORMATION:

PALM DESERT CITY HALL

73510 FRED WARING DR,
PALM DESERT, CA 92260

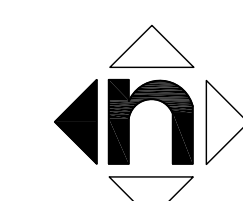
SHEET NAME:

COUNCIL CHAMBERS & ADMIN. CONF. ROOM

SHEET NUMBER:

A-3.5

SCALE: 3/16" = 1'-0"
PRINTED: 11.27.2023





City Hall Space Planning

ID	ID	Task Name	Status	Comments	Duration	Start	Finish	Predecessors	Successors	2024																				
										O	N	D	J	F	M	A	M	J	J	A	S	O	N	D	J	F	M	A	M	J
1	1	Project Duration FY 23/24			169 days	Fri 10/27/23	Wed 6/19/24			[Gantt bar from Oct 27 to Jun 19]																				
2	2	Phase 1 - Development Services			104 days	Fri 10/27/23	Wed 3/20/24			[Gantt bar from Oct 27 to Mar 20]																				
3	3	Floor Tile Removal			4 days	Fri 10/27/23	Wed 11/1/23			[Task bar from Oct 27 to Nov 1]																				
4	4	Staff Move			2 days	Mon 11/6/23	Tue 11/7/23			[Task bar from Nov 6 to Nov 7]																				
5	5	Development Services Lobby Open			0 days	Wed 11/8/23	Wed 11/8/23			[Milestone diamond on Nov 8]																				
6	6	Carpet - Permit Center			2 days	Mon 11/13/23	Tue 11/14/23		7	[Task bar from Nov 13 to Nov 14]																				
7	7	(2) Temp. cubicles		Relocate from Econ. Dev.	1 day	Fri 11/17/23	Fri 11/17/23	6	8	[Task bar from Nov 17 to Nov 17]																				
8	8	Staff Move			1 day	Mon 11/20/23	Mon 11/20/23	7		[Task bar from Nov 20 to Nov 20]																				
9	9	New Cubicles - Vendor Contract			20 days	Mon 12/18/23	Fri 1/12/24		10	[Task bar from Dec 18 to Jan 12]																				
10	10	New Cubicles - Procurement			45 days	Mon 1/15/24	Fri 3/15/24	9	15	[Task bar from Jan 15 to Mar 15]																				
11	11	Setup Temporary Swing Space			2 days	Mon 3/4/24	Tue 3/5/24		12	[Task bar from Mar 4 to Mar 5]																				
12	12	Remove Existing Cubicles & Furniture Moves			2 days	Wed 3/6/24	Thu 3/7/24	11	13	[Task bar from Mar 6 to Mar 7]																				
13	13	Remove Walls			2 days	Fri 3/8/24	Mon 3/11/24	12	14	[Task bar from Mar 8 to Mar 11]																				
14	14	Carpet - Code & Planning			3 days	Tue 3/12/24	Thu 3/14/24	13	15	[Task bar from Mar 12 to Mar 14]																				
15	15	Install New Cubicles			2 days	Mon 3/18/24	Tue 3/19/24	10,14	16	[Task bar from Mar 18 to Mar 19]																				
16	16	Staff Move-In			1 day	Wed 3/20/24	Wed 3/20/24	15		[Task bar from Mar 20 to Mar 20]																				
17	17	Phase 2 - Econ. Development & Special Programs			116 days	Fri 10/27/23	Fri 4/5/24			[Gantt bar from Oct 27 to Apr 5]																				
18	18	Floor Tile Removal			4 days	Fri 10/27/23	Wed 11/1/23			[Task bar from Oct 27 to Nov 1]																				
19	19	New Cubicles - Vendor Contract			20 days	Mon 12/18/23	Fri 1/12/24		20	[Task bar from Dec 18 to Jan 12]																				
20	20	New Cubicles - Procurement			45 days	Mon 1/15/24	Fri 3/15/24	19	24	[Task bar from Jan 15 to Mar 15]																				
21	21	Remove Existing Cubicles & Furniture Moves		Move to temp. Swing Space	4 days	Thu 3/21/24	Tue 3/26/24		22	[Task bar from Mar 21 to Mar 26]																				
22	22	Carpet			2 days	Wed 3/27/24	Thu 3/28/24	21	23	[Task bar from Mar 27 to Mar 28]																				
23	23	Paint			2 days	Fri 3/29/24	Mon 4/1/24	22	24	[Task bar from Mar 29 to Apr 1]																				
24	24	Install New Cubicles			2 days	Tue 4/2/24	Wed 4/3/24	23,20	25	[Task bar from Apr 2 to Apr 3]																				
25	25	Staff Move-In			2 days	Thu 4/4/24	Fri 4/5/24	24		[Task bar from Apr 4 to Apr 5]																				
26	26	Phase 3 - Building Inspectors			98 days	Mon 12/18/23	Wed 5/1/24			[Gantt bar from Dec 18 to May 1]																				
27	27	New Cubicles - Vendor Contract			20 days	Mon 12/18/23	Fri 1/12/24		28	[Task bar from Dec 18 to Jan 12]																				
28	28	New Cubicles - Procurement			45 days	Mon 1/15/24	Fri 3/15/24	27		[Task bar from Jan 15 to Mar 15]																				
29	29	Remove Existing Cubicles & Furniture Moves		Move to temp. Swing Space	4 days	Mon 4/8/24	Thu 4/11/24		30	[Task bar from Apr 8 to Apr 11]																				
30	30	Office Build Out / Carpet / Paint			10 days	Fri 4/12/24	Thu 4/25/24	29	31	[Task bar from Apr 12 to Apr 25]																				
31	31	Install New Cubicles			2 days	Fri 4/26/24	Mon 4/29/24	30	32	[Task bar from Apr 26 to Apr 29]																				
32	32	Staff Move-In			2 days	Tue 4/30/24	Wed 5/1/24	31		[Task bar from Apr 30 to May 1]																				
33	33	Phase 4 - Public Works & Landscape Inspectors			114 days	Mon 12/18/23	Thu 5/23/24			[Gantt bar from Dec 18 to May 23]																				
34	34	New Cubicles - Vendor Contract			20 days	Mon 12/18/23	Fri 1/12/24		35	[Task bar from Dec 18 to Jan 12]																				
35	35	New Cubicles - Procurement			45 days	Mon 1/15/24	Fri 3/15/24	34	37	[Task bar from Jan 15 to Mar 15]																				
36	36	Furniture Moves			10 days	Mon 5/6/24	Fri 5/17/24		37	[Task bar from May 6 to May 17]																				
37	37	Install New Cubicles			2 days	Mon 5/20/24	Tue 5/21/24	35,36	38	[Task bar from May 20 to May 21]																				
38	38	Staff Move-In			2 days	Wed 5/22/24	Thu 5/23/24	37		[Task bar from May 22 to May 23]																				
39	39	Phase 5 - Capital Projects & Public Works			133 days	Mon 12/18/23	Wed 6/19/24			[Gantt bar from Dec 18 to Jun 19]																				
40	40	New Cubicles - Vendor Contract			20 days	Mon 12/18/23	Fri 1/12/24		41	[Task bar from Dec 18 to Jan 12]																				
41	41	New Cubicles - Procurement			45 days	Mon 1/15/24	Fri 3/15/24	40	44	[Task bar from Jan 15 to Mar 15]																				
42	42	Remove Existing Cubicles & Furniture Moves			4 days	Mon 5/27/24	Thu 5/30/24		43	[Task bar from May 27 to May 30]																				
43	43	Mtg. Space Build Out / Carpet / Paint			10 days	Fri 5/31/24	Thu 6/13/24	42	44	[Task bar from May 31 to Jun 13]																				
44	44	Install New Cubicles			2 days	Fri 6/14/24	Mon 6/17/24	43,41	45	[Task bar from Jun 14 to Jun 17]																				
45	45	Staff Move-In			2 days	Tue 6/18/24	Wed 6/19/24	44		[Task bar from Jun 18 to Jun 19]																				
46	46	Project Duration FY 24/25			261 days	Mon 7/1/24	Mon 6/30/25			[Gantt bar from Jul 1 to Jun 30]																				
47	47	Phase 6 - City Manager's Office			261 days	Mon 7/1/24	Mon 6/30/25			[Gantt bar from Jul 1 to Jun 30]																				
48	48	Phase 7 - North Wing			261 days	Mon 7/1/24	Mon 6/30/25			[Gantt bar from Jul 1 to Jun 30]																				

Date: Fri 11/17/23

Task		Project Summary		Inactive Summary		Manual Summary		External Milestone	
Split		External Tasks		Manual Task		Start-only		Progress	
Milestone		External Milestone		Duration-only		Finish-only		Deadline	
Summary		Inactive Milestone		Manual Summary Rollup		External Tasks			