

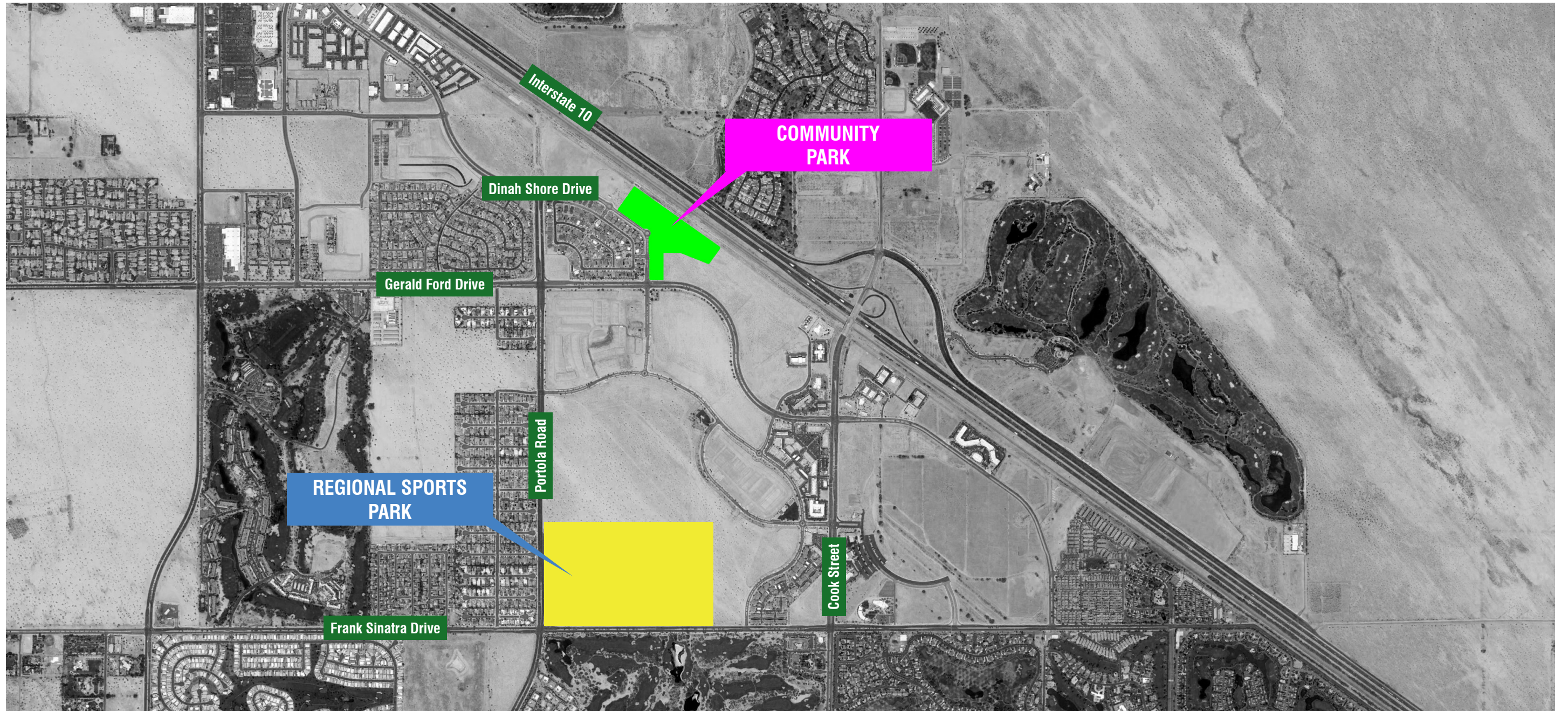
SCHEMATIC DESIGN PRESENTATION

CITY OF PALM DESERT

City Council Meeting

Interwest + Calvin, Giordano & Associates, Inc.





Park Locations



MILLENNIUM PALM DESERT MASTER PLAN

Millennium Specific Plan

MODULE

- 01 What has been done
- 02 Where are we in the process
- 03 Schematic Design Ideas - Community Park
- 04 Next Steps

What has been done?

01

- Nov. 2022 Public Engagement begins via *Engage Palm Desert*
- Dec. 03, 22 1st 'Open House'
- Jan. 14, 23 2nd 'Open House'

Conceptual Design Presentations

- Jun. 06, 23 Parks and Recreation Committee
- Jun. 13, 23 Architectural Review Committee
- Jun. 14, 23 Cultural Arts Committee
- Jun. 19, 23 Resource Preservation and Enhancement Committee
- Jun. 20, 23 North Palm Desert Homeowners' Associations
- Jun. 20, 23 Planning Commission
- Jun. 22, 23 City Council
- Aug. 05, 23 3rd 'Open House'
- Nov. 7, 23 Parks and Recreation Committee Presentation

Public Engagement History

Key Take-Aways for Advancing to Schematic Design

Stakeholders' requests:

1. More parking, but less along Dinah Shore frontage
2. Less hardscape areas, more turf areas
3. Separate large and small dog entrances and accessways
4. Pavilion shelters with no shared use area
5. Activation Core: Pickleball and Basketball, no Beach Volleyball
6. More trees & more shade
7. More landscape areas for pollinator plants
8. More color (planting and hardscape)
9. More small moments throughout the park
10. More opportunities for connectivity, not just primary paths

Key Take-Aways for Advancing to Schematic Design

Comments from Parks and Recreation Committee:

1. Approval of the Schematic Design with the suggestion that a consideration be made to add lighting to the drainage basin so it can be used for informal sport games.

Concerns:

- Having 2 separate parking lots and concerns about park visitors having to connect from one to the other.

Where are we in the process?

02

- Completed Conceptual Design - presented preliminary ideation phase
- **Schematic Design Iteration**
 - Review design modifications
 - Seeking approval of Schematic Design to proceed with
 - Design and Engineering
 - Construction Documents Preparation

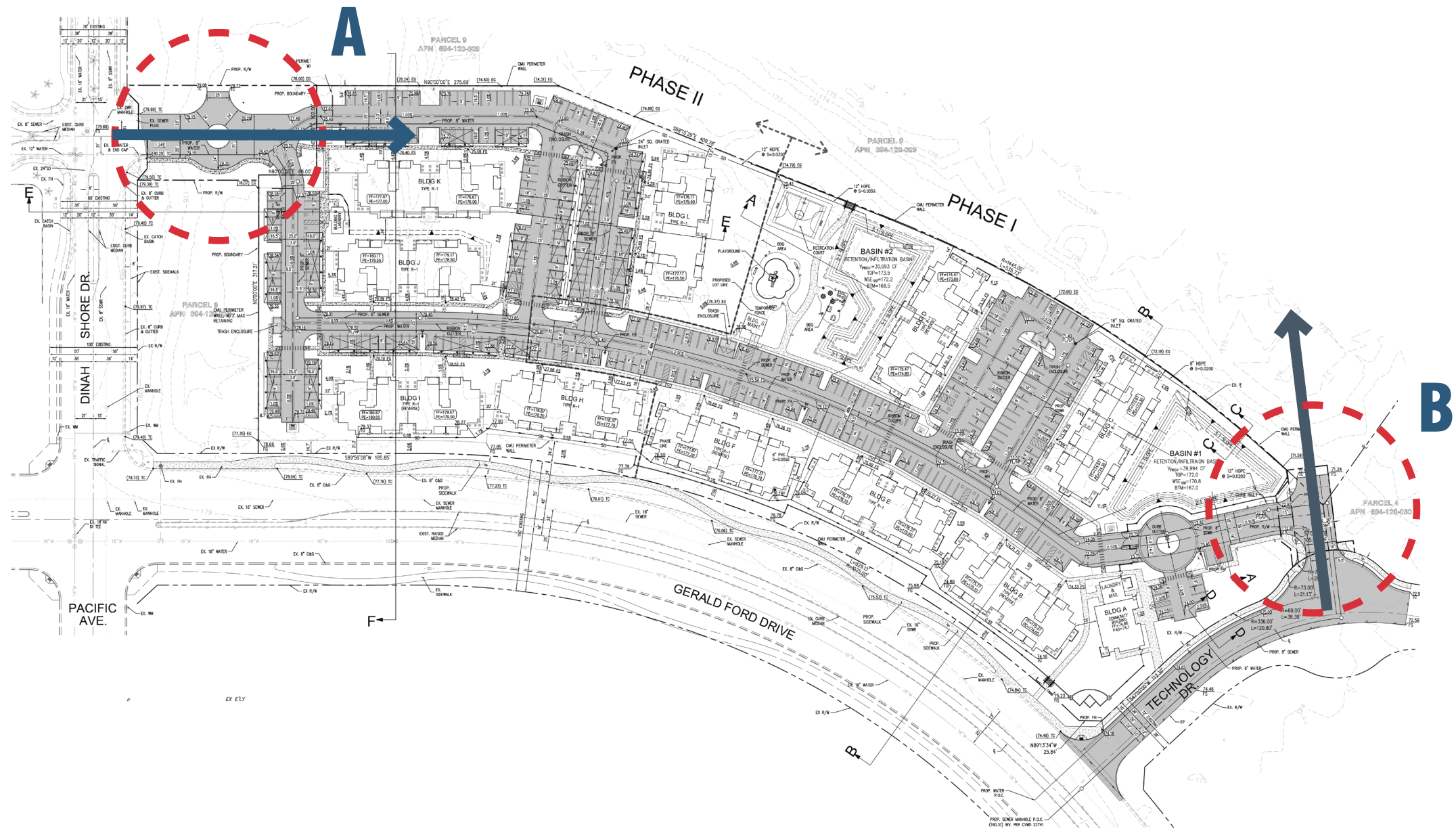
Goals & Strategy

December 2023	Schematic Design Approvals, NTP with Design & Engineering
Early 2024	Engage a Contractor for cost assurances
September 2024	Finalize Construction Plans Development
November 2024	Finalize Permitting
Dec 2024/Jan 2025	Commence Construction

Targeted Schedule

Schematic Design Ideas - Community Park

03



Contextualization

*“City shall have the right, but not the obligation, to develop Planning Area 8 and 9 as affordable housing and a regional park site, subject to any reconfiguration of the parcels and changes in densities as deemed necessary by the City, and generally as described in the Project approvals. **The City shall, however, provide a landscaping buffer of at least 75 feet in width on the east side of Dinah Shore Drive, from Gerald Ford Drive to the roundabout.**”*

Contextualization







Contextualization



Deconstructing the Design



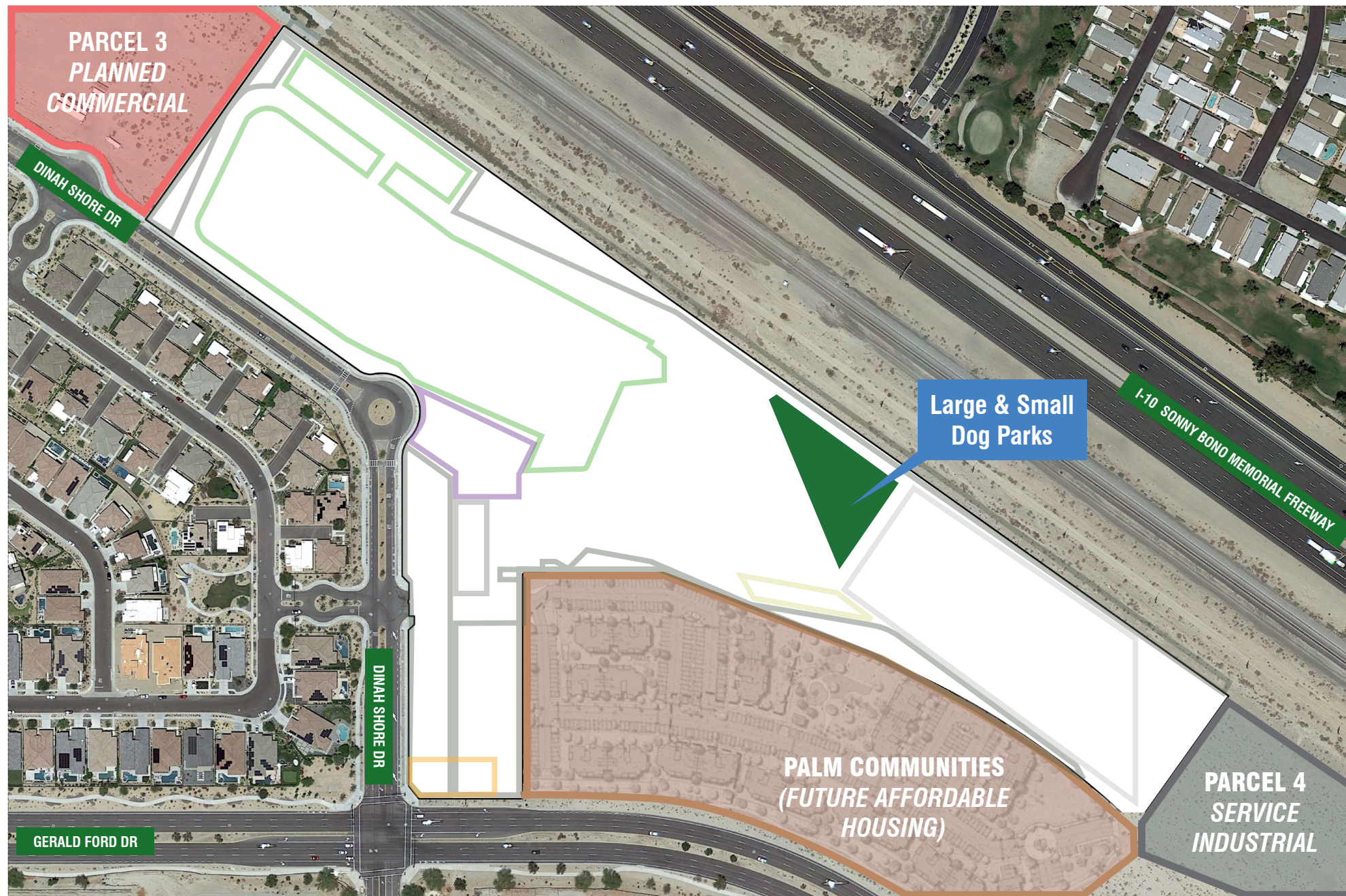
Deconstructing the Design



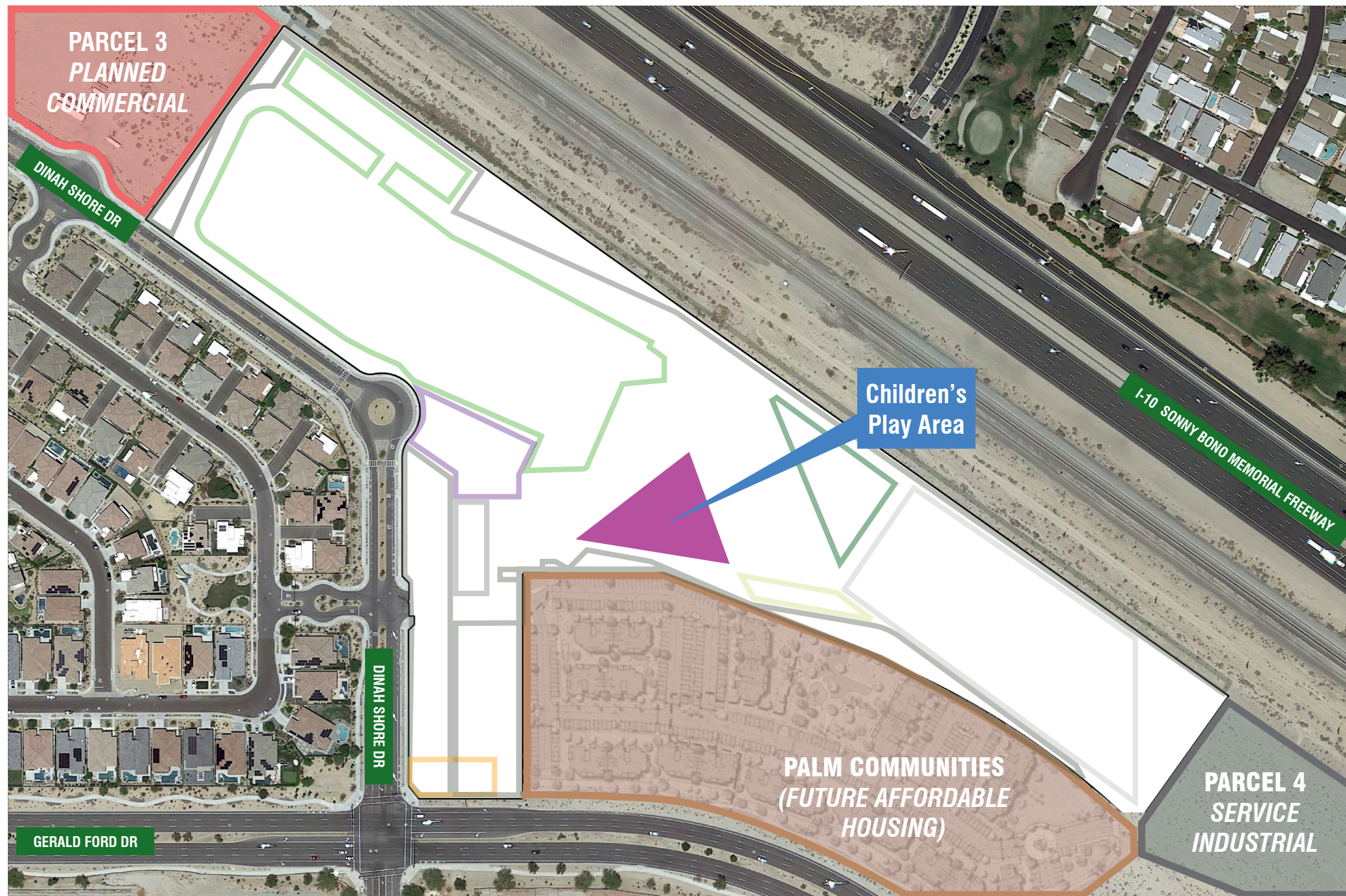
Deconstructing the Design



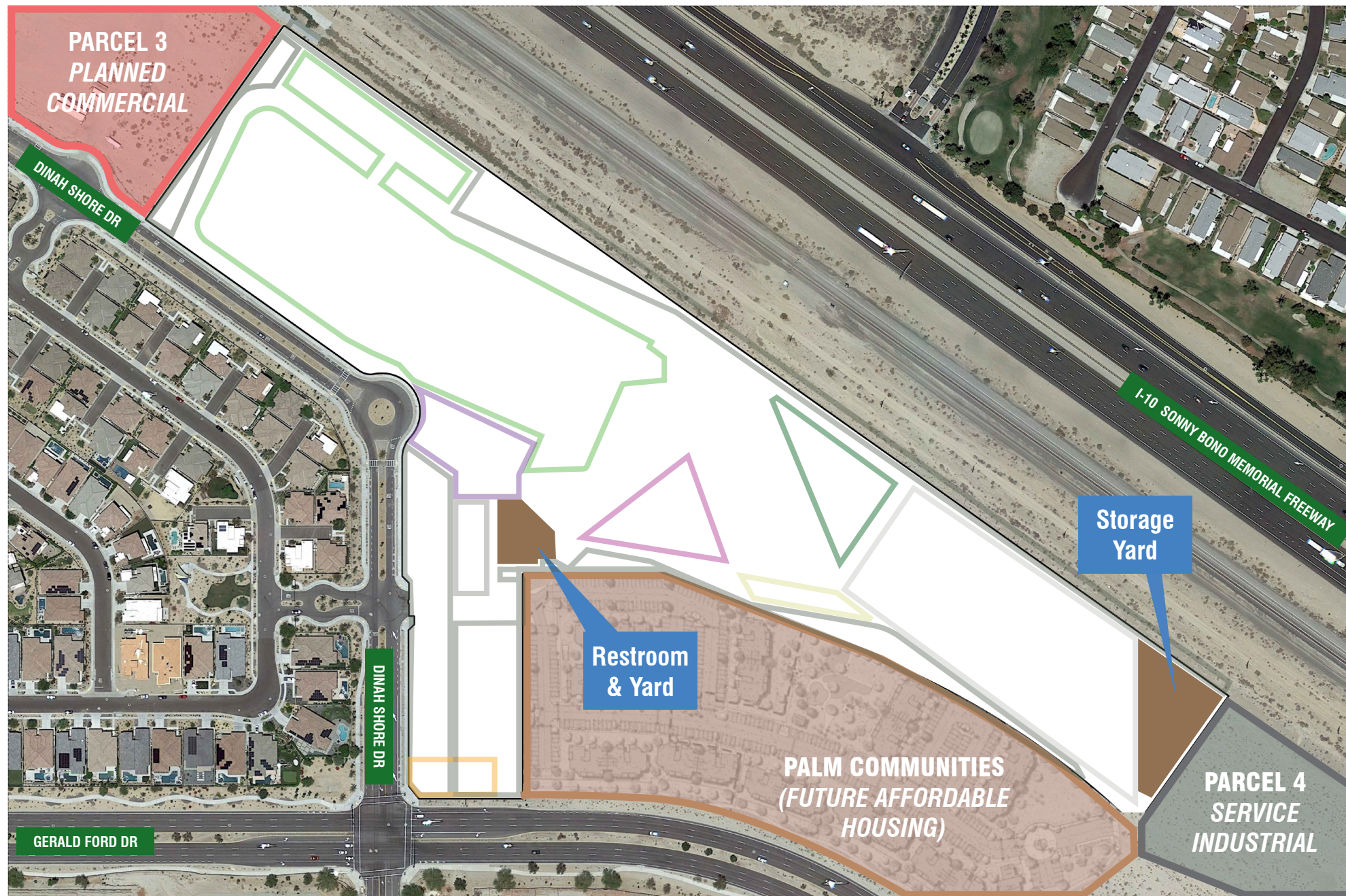
Deconstructing the Design



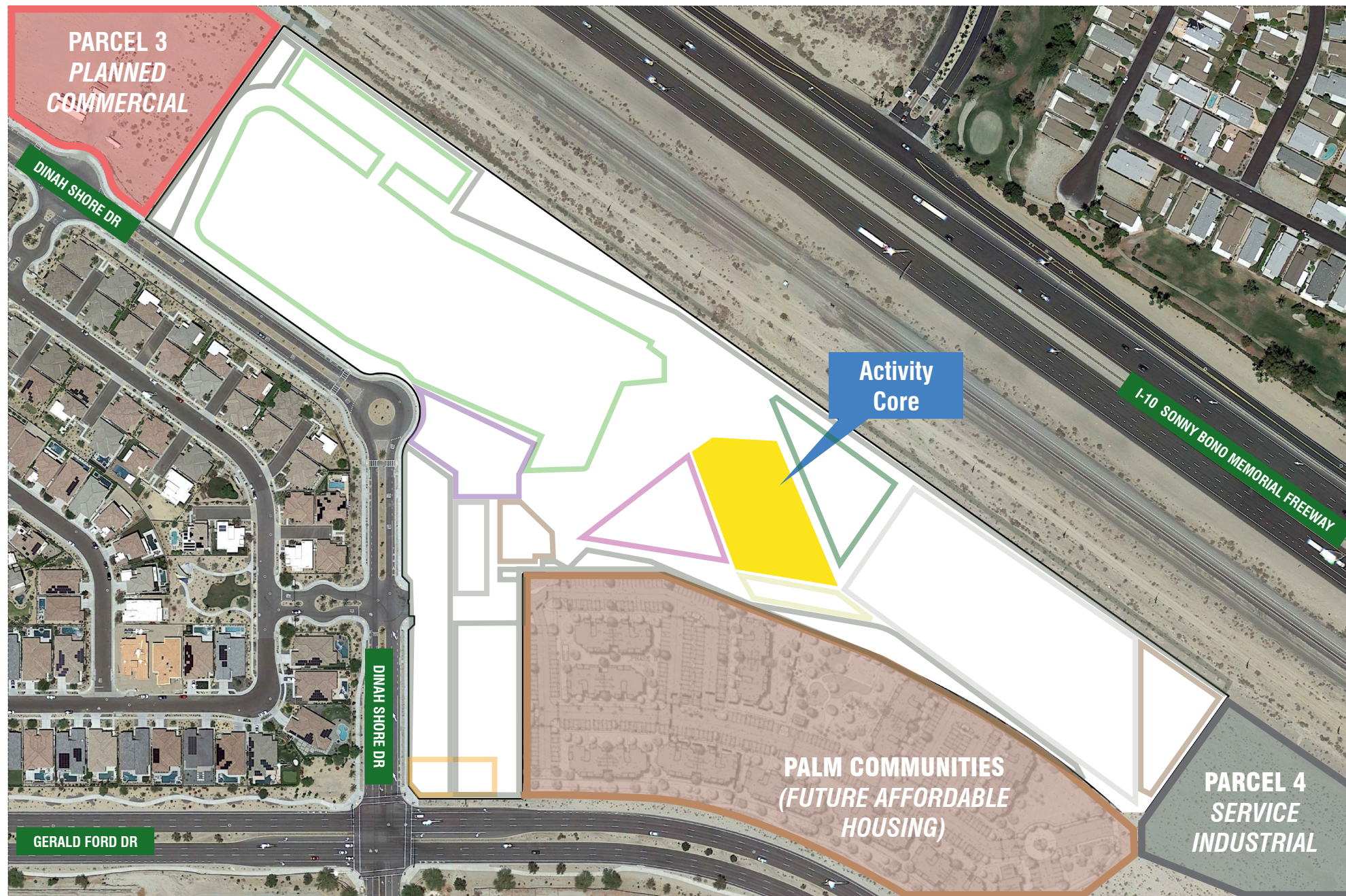
Deconstructing the Design



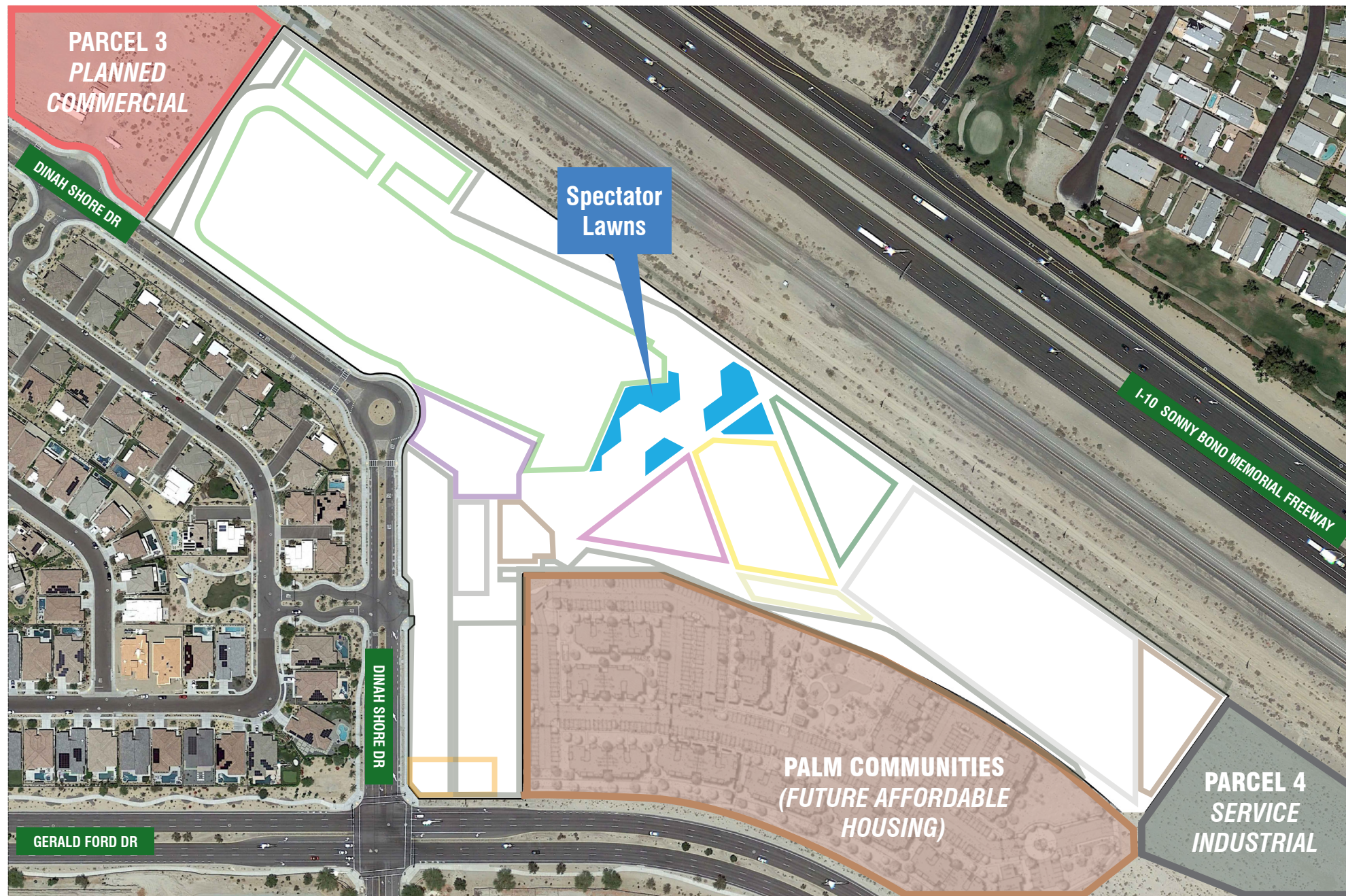
Deconstructing the Design



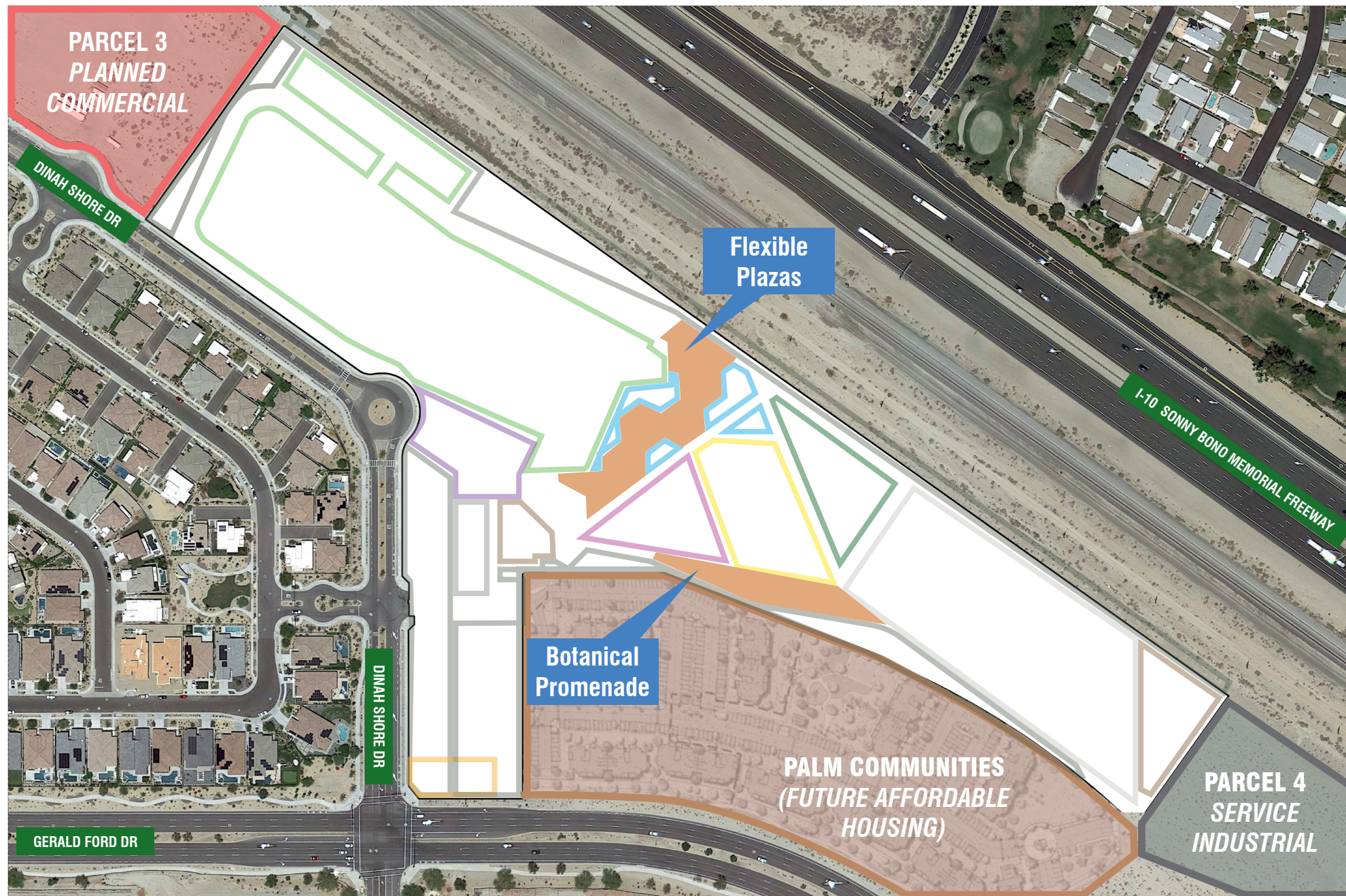
Deconstructing the Design



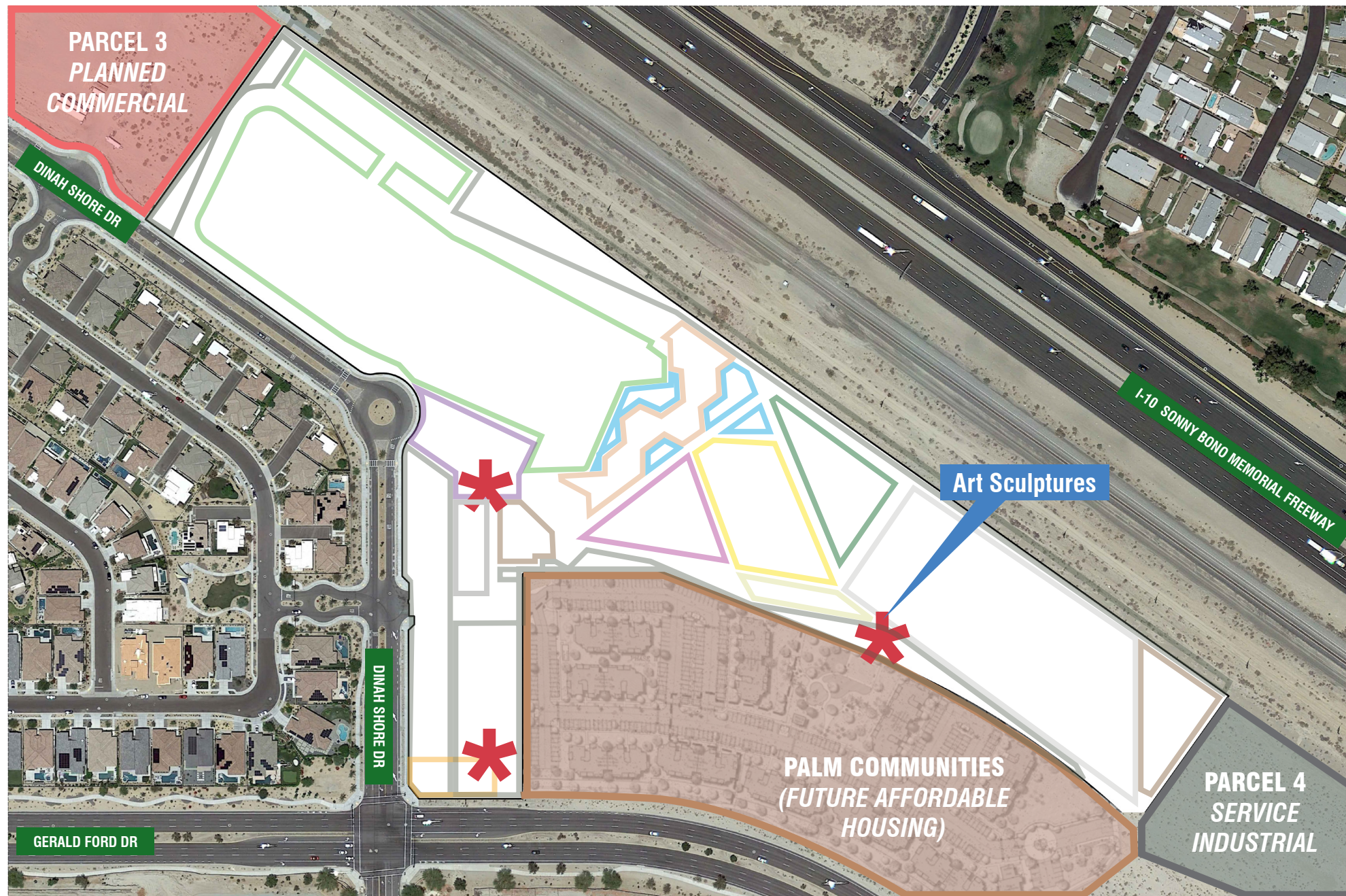
Deconstructing the Design



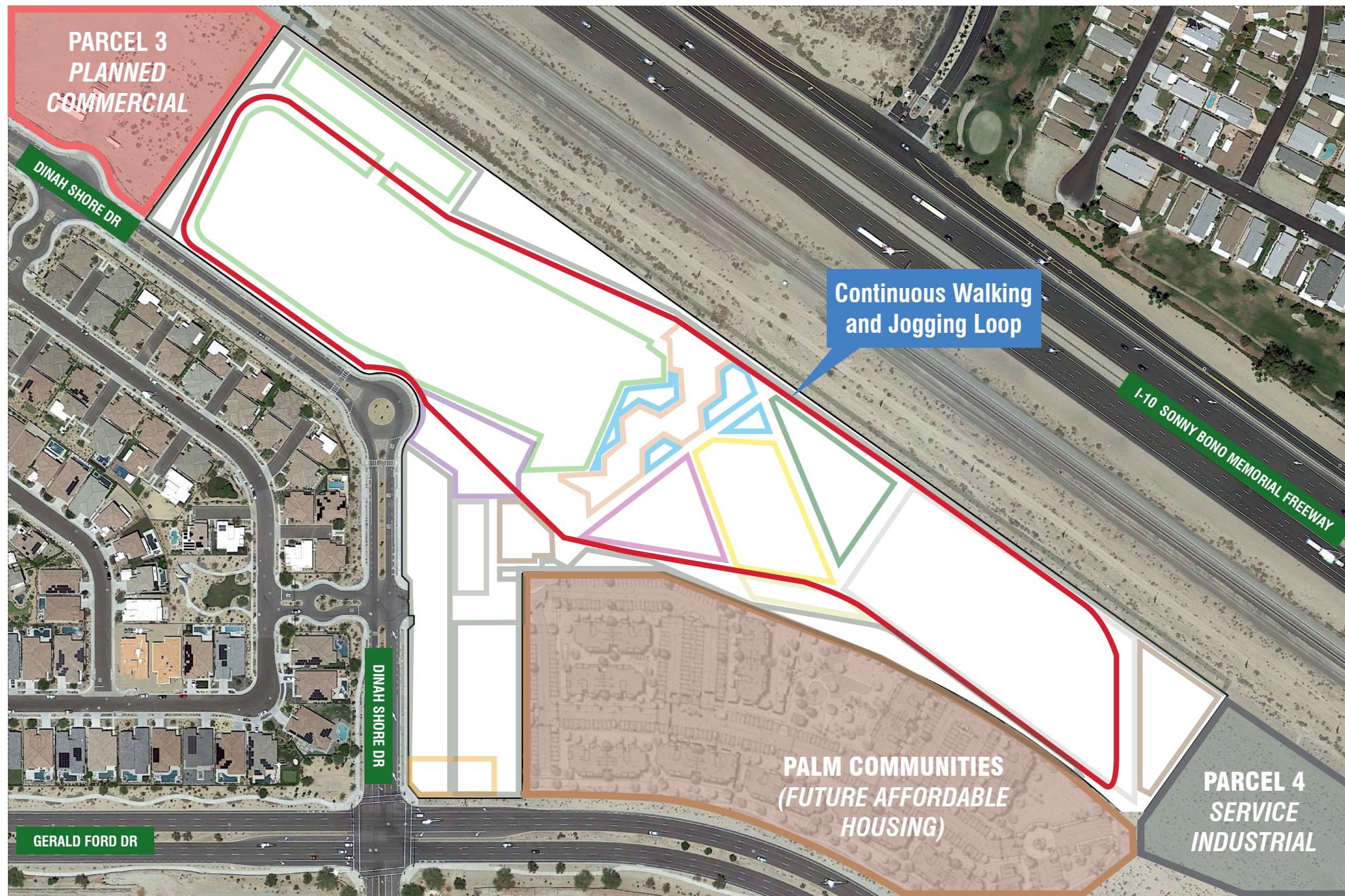
Deconstructing the Design



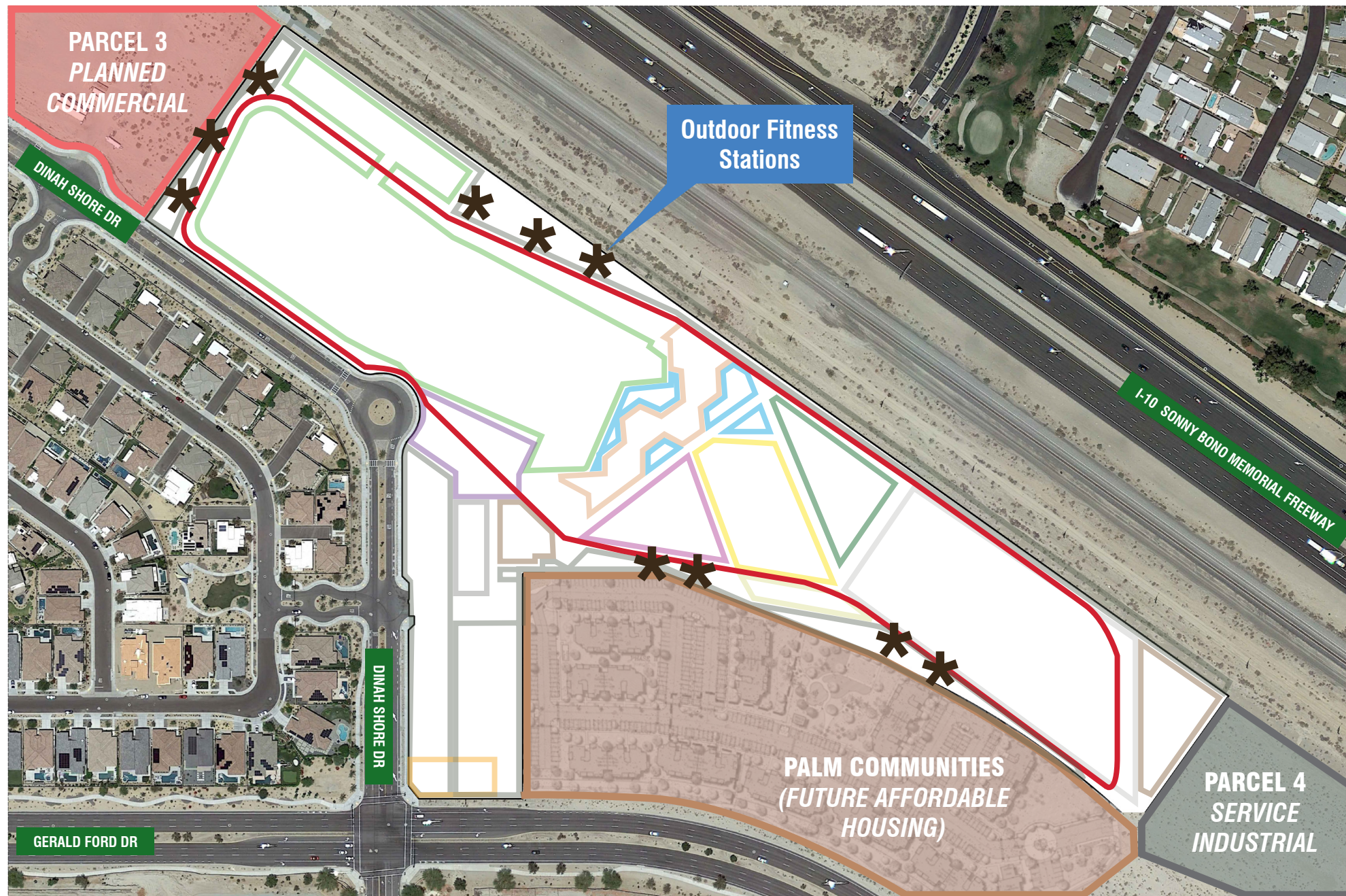
Deconstructing the Design



Deconstructing the Design



Deconstructing the Design



Deconstructing the Design

Design Updates



Schematic Iteration

What remains aligned
with the original vision?



Arts Plaza



Drainage Basin



Dinah Shore Streetscape

DINAH SHORE DR



Maintenance Yard



Children's Playground



Dog Parks

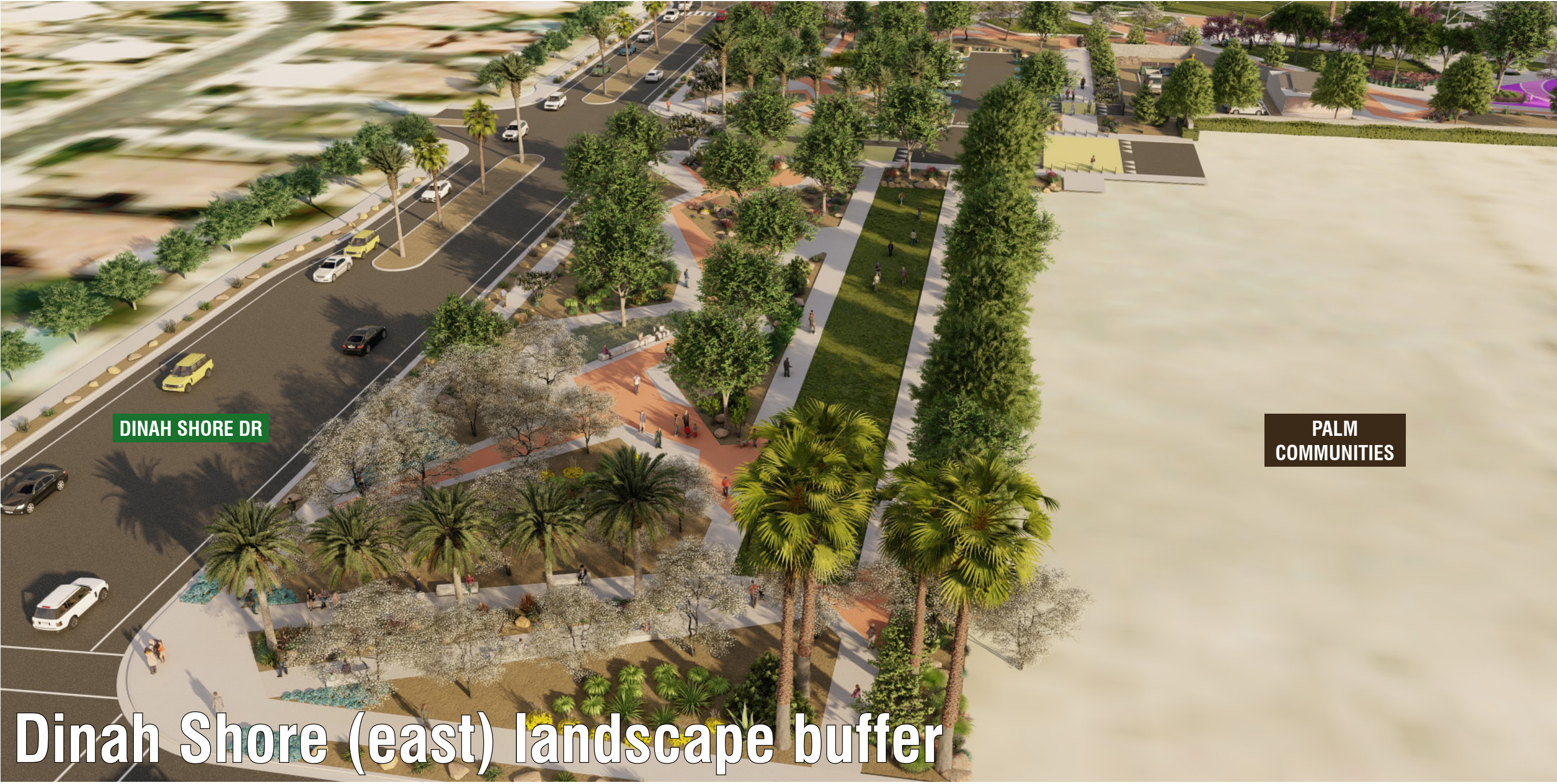


Botanical Promenade



Parking Lot & Storage Yard

What has been substantially modified?



DINAH SHORE DR

PALM COMMUNITIES

Dinah Shore (east) landscape buffer

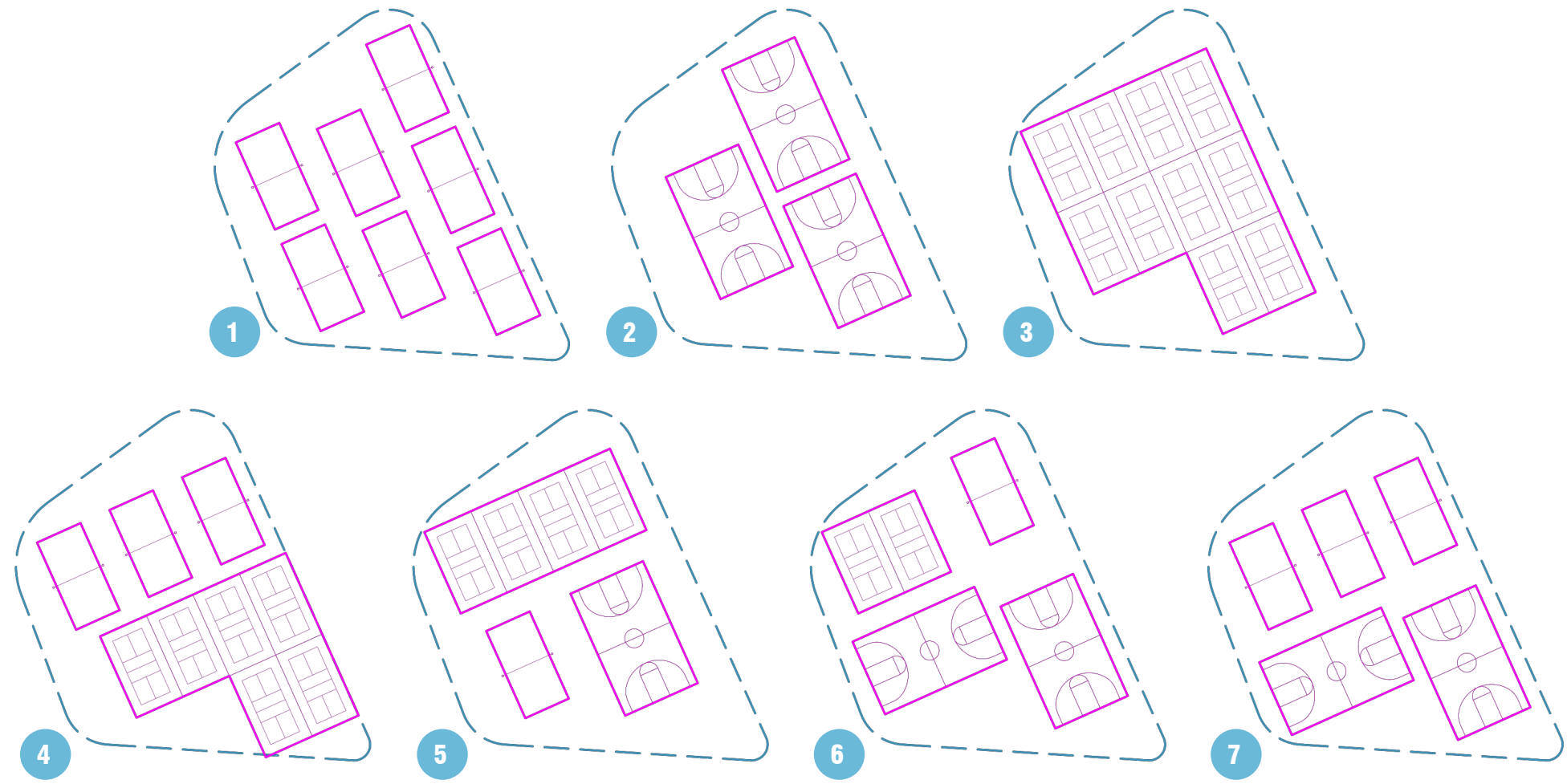


Dinah Shore (east) landscape buffer



Dinah Shore (east) landscape buffer

PREVIOUS ITERATION



FEEDBACK

Pickleball
+
Basketball



Modified 'Activity Core'



Updated shelter designs to provide more shade



Reduced size of 'Cloud Plaza'



Modular design approach to structured canopy



New entrance design to enlarged parking lot



Adjusted lighting to new design layout



Responsive to Needs



A Good Neighbor



Organized & Functional



Performative & Responsive



Varied Offerings



Multi-generational



Comfortable & Shaded



Safety & CPTED

Next Steps

04

December 2023	Schematic Design Approvals, NTP with Design & Engineering
Early 2024	Engage a Contractor for cost assurances
September 2024	Finalize Construction Plans Development
November 2024	Finalize Permitting
Dec 2024/Jan 2025	Commence Construction

Next Steps

Thank you

