

The background features a light blue gradient with a large, faint illustration of a mosquito in the center and a palm tree on the left side. The mosquito is shown in profile, facing right, with its wings spread. The palm tree is a simple silhouette with a long trunk and a crown of fronds.

CVMVCD District Programs, Challenges and New Strategies

Doug Walker, Trustee
Jeremy Wittie MS , General Manager

January 11, 2024

Protecting Public Health Since 1928



Protecting Public Health Since 1928



Organizational Structure

- **11-member Board of Trustees**

- One per city
- Two from County at Large

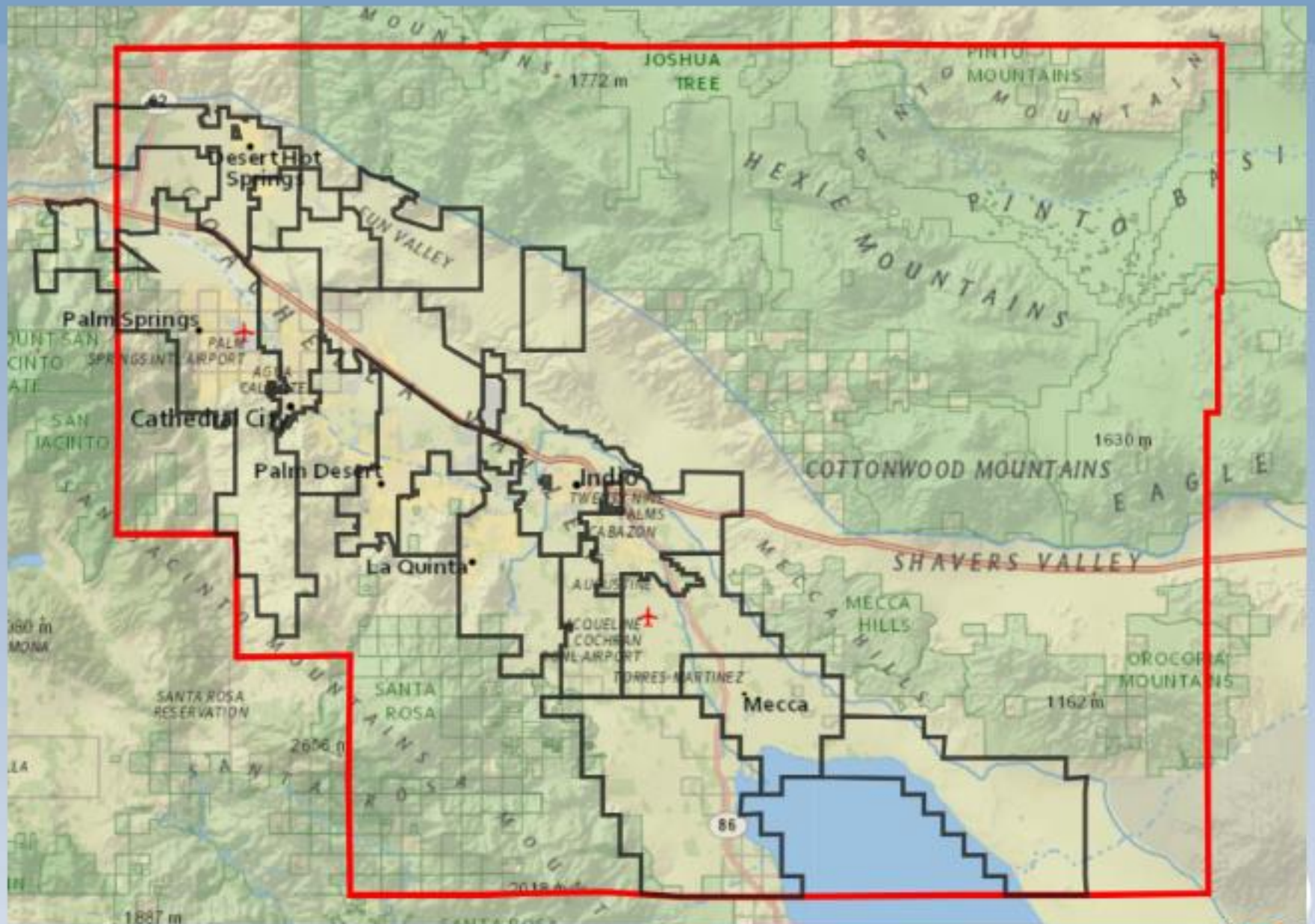
- **69 employees**

- a) 2..... General Manager and his assistant/Clerk of the Board
- b) 34.....Control Operations
- c) 11.....Laboratory and Quality Control
- d) 3.....Unmanned Aerial Application (drones)**
- e) 5Public Outreach
- f) 6Finance and Administration
- g) 5Information Technology and Fleet Management
- h) 3Human Resources



Protecting Public Health Since 1928



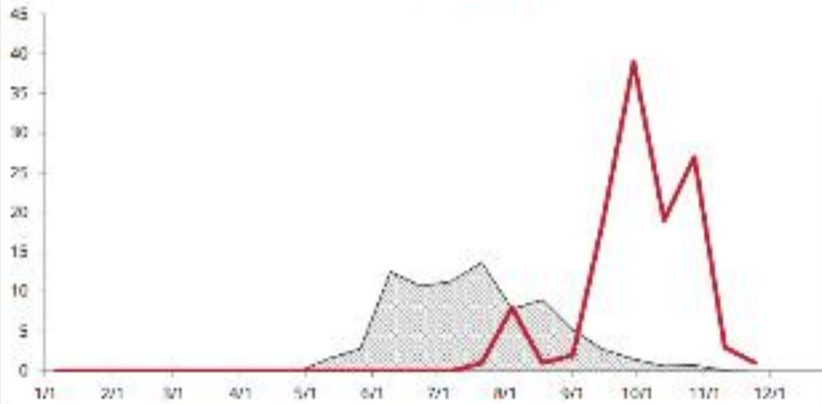


Mosquito Viruses and Invasive Mosquitoes



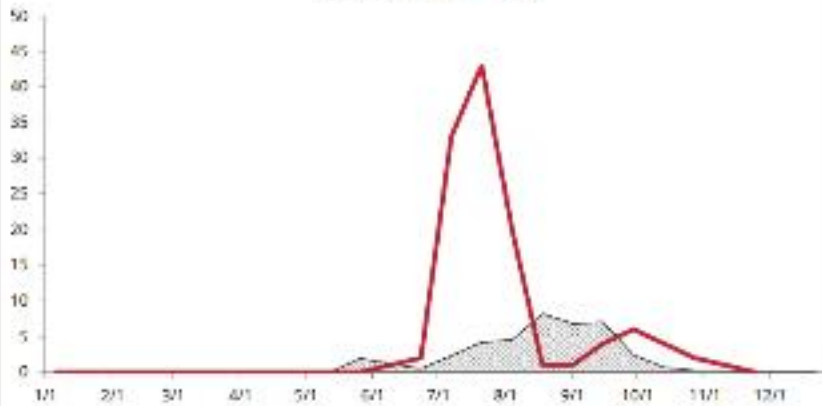
West Nile virus mosquito samples

5-year average 2023

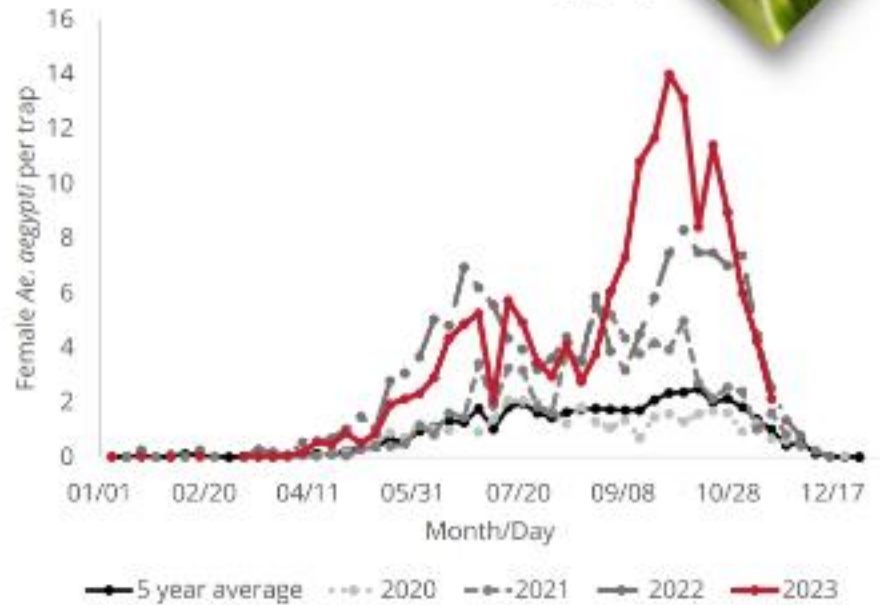


St. Louis Encephalitis virus samples

5-year average 2023



Number of female *Aedes aegypti* per trap

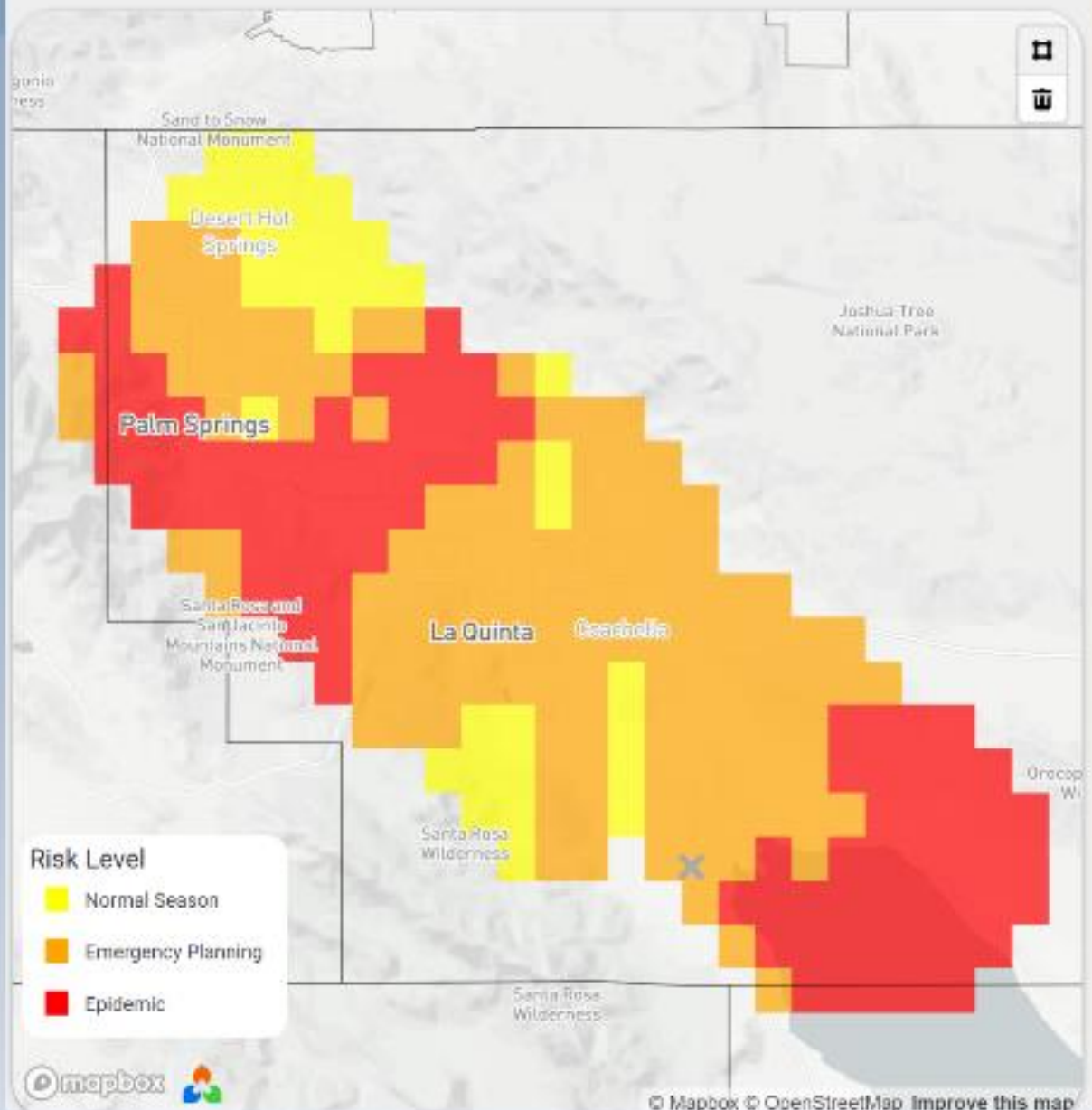


Protecting Public Health

- **Identify areas of greatest risk**
 - Lab Department
 - Look and Test
 - Relay information
- **Act quickly to reduce the risk**
 - Operations Department
 - Chemical /Physical / Biological Control
- **Inform and educate the public**
 - Public Outreach and Administration Department
 - Aim to educate to prevent and protect
 - Influence policy to prevent vector sources long term

Protecting Public Health Since 1928





New Strategies

- **Evaluation of Sterile Insect Technique (SIT)**
 - Using non-biting sterile male mosquitoes to control the invasive mosquito population
- **Engage and collaborate** with Community Leaders, Agencies and Residents to empower them eliminate mosquito sources.





Where we can work together



Protecting Public Health Since 1928



Reshape local ordinances for permanent solutions

24.04.050 Landscape design plan.

- A. For efficient use of water, a landscape design plan shall be carefully designed and planned for the intended function of the project.
- B. The landscape design plan shall be submitted as part of the landscape documentation package and include all components, contents, and items required by CVWD Ordinance 1302.1.
- C. The landscape design plan shall incorporate design criteria found in the current edition of the city's "Desert Flora Design Guide" publication. (Ord. 1374 § 1, 2022; Ord. 1258 § 1, 2013)



24.04.120 Nuisance and waste water prevention.

- A. **Public Nuisance Declaration.** Any landscaping or landscaping irrigation system installed or maintained in violation of this chapter, including those failing to conform to approved landscaping plans, is declared to be a public nuisance under Section [8.70.010](#) and [8.70.030](#) and is subject to abatement pursuant to Chapter [8.20](#).
- B. **Nuisance Water.** The operation of a landscape irrigation system that creates overspray and/or runoff onto impervious surfaces (such as sidewalks, driveways, ditches, gutters, and roadways) in the public right-of-way shall be deemed to create nuisance water when such condition is observed to exist on **any three days within a seven-day period**. Nuisance water is a public nuisance under Section [8.20.020\(T\)\(8\)](#) and subject to abatement pursuant to Chapter [8.20](#).
- C. **Variances.** The city manager or their designee may, in writing, grant variances to persons who apply in writing for water uses prohibited by this chapter if it is found that a variance is necessary to prevent an emergency condition relating to health and safety, and if the person seeking a variance has demonstrated that he or she has implemented measures in some other manner that achieves the objectives of the chapter. (Ord. 1374 § 1, 2022; Ord. 1258 § 1, 2013)



What can PD residents do?

- Dump and Drain – Tablespoon of water and up!
- Eliminate irrigation runoff
- Protect Yourself from Bites
 - Use EPA/CDC approve repellants
 - Dusk and Dawn – limit and cover up
 - Window and Door screens in good repair
- Educate your neighbors and work together
- Got to our new website for more information
 - www.cvmosquito.org
 - Call 760-342-8287

